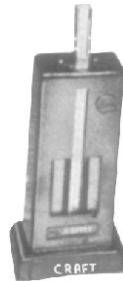
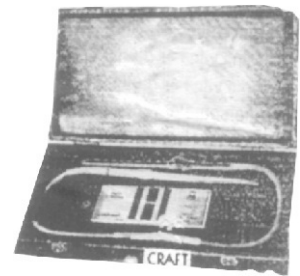


## Biocraft's Haemometric Apparatus

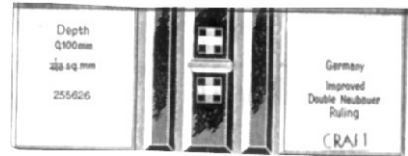
- BPHA-1 **Haemometer (Haemoglobinometer)**—(Imported)—  
 With two non-fading precision glass colour standard tubes  
 and other accessories. **Rs. 490**
- BPHA-2 **Haemometer**—(Best Indian)—With all accessories  
**Rs. 295**
- BPHA-3 **Haemometer**—'Top' plano parallel with square tube  
**Rs. 1050**
- BPHA-4 **Digital Haemoglobinometer (HbMETER)**—The HB  
 meter is compact reliable micro-controlled based  
 equipment. Complete with accessories. Memory for the  
 storage of samples. **Rs.10,800**
- BPHA-5 **Haemocytometer**—Imported—Neubauer improved  
 double ruling counting chamber with a pair of cover  
 glasses and RBC and WBC diluting pipettes complete in  
 velvet lined box. **Rs. 850**
- BPHA-7 **Haemocytometer**—With Bright line counting chamber  
 and RBC/WBC pipettes complete in box. **Rs. 1,550**
- BPHA-8 **Counting Chamber**—Double Neumber. Imported.  
**Rs. 495**
- BPHA-9 —do— With Bright Line **Rs. 1,170**
- BPHA-10 **Haemocytometer cover glass**—10 pairs in a box **Rs. 45**
- BPHA-11 **RBC/WBC Pipettes with latex tubing**—Imported **Rs. 95**  
 Heamometer —do— Indian **Rs. 45**
- BPHA-12 **Haemometer** round tube graduated—Imported **Rs. 80**  
 —do— Indian **Rs. 30**
- BPHA-13 **Haemometer** square tube graduated **Rs. 130**
- BPHA-14 **Stethoscope Standard**—High quality instrument.  
**Rs. 300**
- BPHA-15 —do— Delux **Rs. 440**
- BPHA-16 —do— Imported **Rs. 650**
- BPHA-17 **Blood Pressure Apparatus ISI Mark**—a compact  
 portable instrument for use in measuring blood pressure.  
 Scale calculated from 0 to 260 m. m. Complete with  
 mercury, bandage type cuff. in metal case. **Rs. 2,380**
- BPHA-18 **Blood Pressure Apparatus**—(Aneroid dial type)—  
 Complete with velco cuff and with Japan made dial.  
**Rs. 650**
- BPHA-19 **Automatic Digital Electronic Blood Pressure  
 Apparatus**— Easy, Convenient automatic operation. One  
 can do himself with any assistance. Clinically proven  
 accuracy (Imported). Delux **Rs. 2,980**
- BPHA-20 **Tunicate Belt** for Taking Blood samples **Rs. 27**
- BPHA-21 **ESR**—Westergreen Pipettes German — **Rs. 62**  
 Indian — **Rs. 32**
- BPHA-22 **ESR**—Westergreen stand 6 Tubes **Rs. 180**
- BPHA-23 **Wintrobe Tube**—Graduated **Rs. 35**



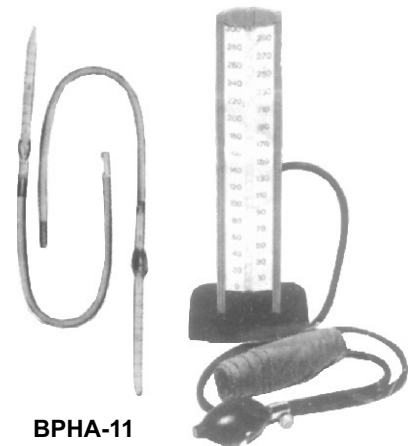
BPHA-1



BPHA-5



BPHA-8



BPHA-11



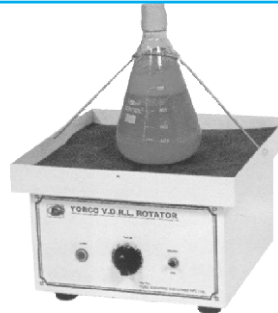
BPHA-17



BPHA-14

**Biocraft's Haemometric Apparatus**

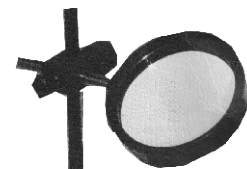
- BPHA-24 **Wintrobe Stand**—For 3 Tubes **Rs. 160**  
 For 6 Tubes **Rs. 205**
- BPHA-25 **VDRL Rotator**—With German/Japan timer electrically operated with neon lamp very useful for VDRL blood grouping agglutination tests **Rs. 10,800**
- BPHA-26 **Hand Tally Counter**—Superior four digits upto 9999. **Rs. 270**
- BPHA-27 **Colony Counter**—Improved dark field. Complete with tube light Wolf Huegor counting plate and magnifier. **Rs. 1,900**
- BPHA-28 **Colony Counter**—Electronic with Electronic Marking pen with resetable electro-magnetic counter.  
 3 Digit — **Rs. 4,400**      4 Digit — **Rs. 5,100**
- BPHA-30 **Urinometer** **Rs. 95**
- BPHA-31 **Albunimeter** **Rs. 135**
- BPHA-32 **Blood Capillary tubing**—Pack of 100 pcs. **Rs. 36** per pack
- BPHA-33 Microcapillaries Heparinised (Pack of 100) **Rs. 112**
- BPHA-34 **Blood cell calculator**—(Laboratory Counter) Clay adom USA type 6 units, 5 keys and one totalizer with range 0—999—Export quality **Rs. 1,200**
- BPHA-34 A. **Same as above with 9 units**—8 keys and one Totalizer. **Rs. 1,550**
- BPHA-35 **Digital Blood Cell Counter**—10 digit. **Rs. 4,250**
- BPHA-36 **Craft's Blood grouping slide**—With 12 concavity. **Rs. 120**
- BPHA-37 Same as above with 6 concavities **Rs. 90**
- BPHA-38 **VDRL Slides**
- |            |               |           |           |           |           |
|------------|---------------|-----------|-----------|-----------|-----------|
| Cavities   | 4             | 6         | 8         | 10        | 12        |
| Price each | <b>Rs. 40</b> | <b>48</b> | <b>55</b> | <b>60</b> | <b>70</b> |
- BPHA-39 Doctor's clinical thermometer Best quality. **Rs. 80**  
 —do— Imported **Rs. 165**  
 —do— Imported Digital **Rs. 160**
- BPHA-40 Blood Lancet Imported **Rs. 36** Dozen
- BPHA-41 Folin's Blood Sugar Tube **Rs. 115**
- BPHA-42 Widal Tube (Doz.) **Rs. 72**
- BPHA-43 Durham's Tube (Doz.) **Rs. 32**
- BPHA-44 Imported Glucometer complete with strips and Manual **Rs. 3,000**
- BPHA-44 A. Syringe Needle destroyer—manual **Rs. 540**
- BPHA-44 B. Syringe Needle destroyer—electric **Rs. 1,450**
- BPHA-45 Blood Sugar Testing Kit—complete with Glucometer Strip and Manual **Rs. 3,750**



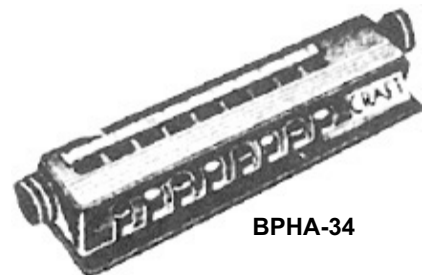
**BPHA-25**



**BPHA-26**



**BPHA-28**



**BPHA-34**



**BPHA-40**