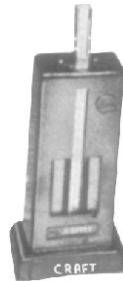
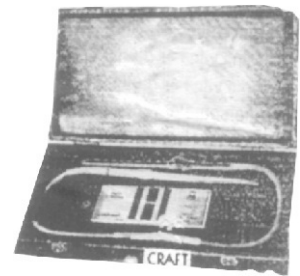


Biocraft's Haemometric Apparatus

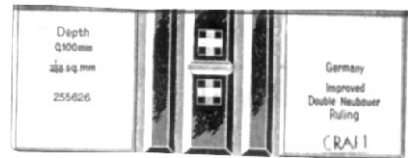
- BPHA-1 **Haemometer (Haemoglobinometer)**—(Imported)—
 With two non-fading precision glass colour standard tubes
 and other accessories. **Rs. 490**
- BPHA-2 **Haemometer**—(Best Indian)—With all accessories
Rs. 295
- BPHA-3 **Haemometer**—'Top' plano parallel with square tube
Rs. 1050
- BPHA-4 **Digital Haemoglobinometer (HbMETER)**—The HB
 meter is compact reliable micro-controlled based
 equipment. Complete with accessories. Memory for the
 storage of samples. **Rs.10,800**
- BPHA-5 **Haemocytometer**—Imported—Neubauer improved
 double ruling counting chamber with a pair of cover
 glasses and RBC and WBC diluting pipettes complete in
 velvet lined box. **Rs. 850**
- BPHA-7 **Haemocytometer**—With Bright line counting chamber
 and RBC/WBC pipettes complete in box. **Rs. 1,550**
- BPHA-8 **Counting Chamber**—Double Neumber. Imported.
Rs. 495
- BPHA-9 —do— With Bright Line **Rs. 1,170**
- BPHA-10 **Haemocytometer cover glass**—10 pairs in a box **Rs. 45**
- BPHA-11 **RBC/WBC Pipettes with latex tubing**—Imported **Rs. 95**
 Haemometer —do— Indian **Rs. 45**
- BPHA-12 **Haemometer** round tube graduated—Imported **Rs. 80**
 —do— Indian **Rs. 30**
- BPHA-13 **Haemometer** square tube graduated **Rs. 130**
- BPHA-14 **Stethoscope Standard**—High quality instrument.
Rs. 300
- BPHA-15 —do— Delux **Rs. 440**
- BPHA-16 —do— Imported **Rs. 650**
- BPHA-17 **Blood Pressure Apparatus ISI Mark**—a compact
 portable instrument for use in measuring blood pressure.
 Scale calculated from 0 to 260 m. m. Complete with
 mercury, bandage type cuff. in metal case. **Rs. 2,380**
- BPHA-18 **Blood Pressure Apparatus**—(Aneroid dial type)—
 Complete with velco cuff and with Japan made dial.
Rs. 650
- BPHA-19 **Automatic Digital Electronic Blood Pressure
 Apparatus**— Easy, Convenient automatic operation. One
 can do himself with any assistance. Clinically proven
 accuracy (Imported). Delux **Rs. 2,980**
- BPHA-20 **Tunicate Belt** for Taking Blood samples **Rs. 27**
- BPHA-21 **ESR**—Westergreen Pipettes German — **Rs. 62**
 Indian — **Rs. 32**
- BPHA-22 **ESR**—Westergreen stand 6 Tubes **Rs. 180**
- BPHA-23 **Wintrobe Tube**—Graduated **Rs. 35**



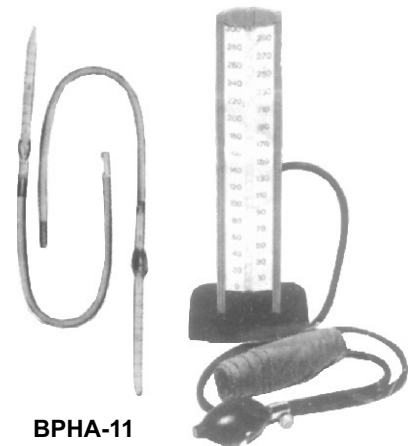
BPHA-1



BPHA-5



BPHA-8



BPHA-11



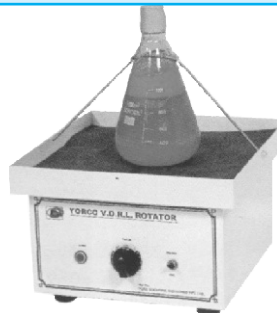
BPHA-17



BPHA-14

Biocraft's Haemometric Apparatus

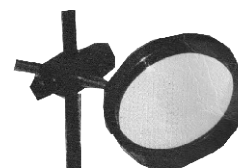
- BPHA-24 **Wintrobe Stand**—For 3 Tubes **Rs. 160**
 For 6 Tubes **Rs. 205**
- BPHA-25 **VDRL Rotator**—With German/Japan timer electrically operated with neon lamp very useful for VDRL blood grouping agglutination tests **Rs. 10,800**
- BPHA-26 **Hand Tally Counter**—Superior four digits upto 9999. **Rs. 270**
- BPHA-27 **Colony Counter**—Improved dark field. Complete with tube light Wolf Huegor counting plate and magnifier. **Rs. 1,900**
- BPHA-28 **Colony Counter**—Electronic with Electronic Marking pen with resetable electro-magnetic counter.
 3 Digit — **Rs. 4,400** 4 Digit — **Rs. 5,100**
- BPHA-30 **Urinometer** **Rs. 95**
- BPHA-31 **Albunimeter** **Rs. 135**
- BPHA-32 **Blood Capillary tubing**—Pack of 100 pcs. **Rs. 36** per pack
- BPHA-33 Microcapillaries Heparinised (Pack of 100) **Rs. 112**
- BPHA-34 **Blood cell calculator**—(Laboratory Counter) Clay adom USA type 6 units, 5 keys and one totalizer with range 0—999—Export quality **Rs. 1,200**
- BPHA-34 A. **Same as above with 9 units**—8 keys and one Totalizer. **Rs. 1,550**
- BPHA-35 **Digital Blood Cell Counter**—10 digit. **Rs. 4,250**
- BPHA-36 **Craft's Blood grouping slide**—With 12 concavity. **Rs. 120**
- BPHA-37 Same as above with 6 concavities **Rs. 90**
- BPHA-38 **VDRL Slides**
- | | | | | | |
|------------|---------------|-----------|-----------|-----------|-----------|
| Cavities | 4 | 6 | 8 | 10 | 12 |
| Price each | Rs. 40 | 48 | 55 | 60 | 70 |
- BPHA-39 Doctor's clinical thermometer Best quality. **Rs. 80**
 —do— Imported **Rs. 165**
 —do— Imported Digital **Rs. 160**
- BPHA-40 Blood Lancet Imported **Rs. 36** Dozen
- BPHA-41 Folin's Blood Sugar Tube **Rs. 115**
- BPHA-42 Widal Tube (Doz.) **Rs. 72**
- BPHA-43 Durham's Tube (Doz.) **Rs. 32**
- BPHA-44 Imported Glucometer complete with strips and Manual **Rs. 3,000**
- BPHA-44 A. Syringe Needle destroyer—manual **Rs. 540**
- BPHA-44 B. Syringe Needle destroyer—electric **Rs. 1,450**
- BPHA-45 Blood Sugar Testing Kit—complete with Glucometer Strip and Manual **Rs. 3,750**



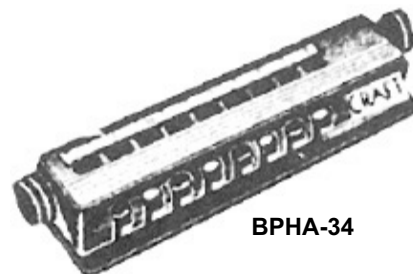
BPHA-25



BPHA-26



BPHA-28



BPHA-34



BPHA-40