

Biocraft's Imported Human Skeleton & Human Anatomical Models

CRAFT'S HUMAN SKELETON (IMPORTED) (170 cm)

Full size replica skeleton are cast from natural Bone skeleton in an unbreakable plastic Bone material. These skeletons are produced to exacting standards in a unique material having the feel, appearance and weight of real Bone.

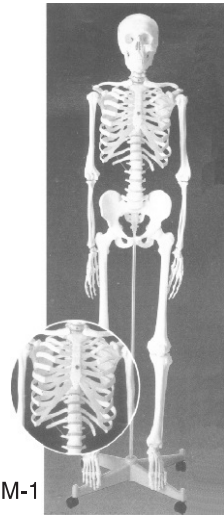
All Anatomical details are carefully, scientifically, medically and correctly reproduced. These skeletons are particularly suitable for courses in Biology, Human Biology, Health Education, Homeopathy, Pharmacy, Medical College and para-medical courses.

HIM-1 HUMAN-FULL SIZE ARTICULATED SKELETON

170 cm Life Size—Medical quality—Articulated to slow normal posture. Skull—Comes with a 3 part with 32 teeth, a cut calvarium and moveable spring held mandible. The arms and legs are detachable and most natural movement can be demonstrated. The skeleton is mounted upright on metal rod with roller stand.

Rs. 14,200 each

HIM-1



HIM-1A Imported Human Ligamentous and Muscular Skeleton (Articulated)

Medical grade same as the No. 1 except the left side of the skeleton is painted to show muscles origins in Red and insertions in Blue. Each is numbered coded with identification keycard.

Rs. 19,700



HIM-2

HIM-2 HUMAN FULL SIZE DISARTICULATED SKELETON

Comes with a 3 piece skull (calvarium cut) and a spring-held jaw complete with bones of the vertebral column. The bones of one hand and one foot are loose. The other hand and foot are articulated with wire. The sternum is cast in one piece and is complete with ribs. With simulated intervertebral discs. All other bones are loose. It is an ideal skeleton for anatomical studies. The skull with three parts & 32 teeth. Two teeth are detachable for demonstrations. Complete skeleton with total bones are packed in a heavy card board box.

Rs. 9,950 each



HIM-3



HIM-4

HIM-3 Imported Craft-104 Human skull (Life size)

Dissectible into three parts with Movable jaw and three removable teeth.

Rs. 1,930 each

HIM-4 Imported Craft 109 life size shoulder joint with ligaments on stand. Demonstrated abduction, adduction, anterversion retroversion and Rotation.

Rs. 1,280 each



HIM-5

HIM-5 Imported Craft 110 Life size Hip joint with Ligaments on stand. Demonstrate Anterversion, Retroversion, Abduction and Rotation

Rs. 1,280 each



HIM-6

HIM-6 Imported Craft 111 Life size Knee joint with ligaments on stand. Demonstrate Anterversion, Retroversion, Abduction and Rotation.

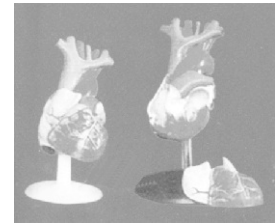
Rs. 1,280 each

Biocraft's Imported Human Skeleton & Human Anatomical Models

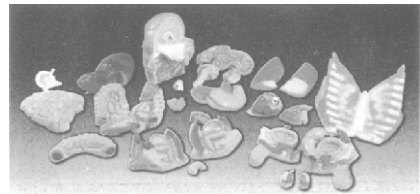
HIM-7 Imported Craft 112 Life size **Elbow joint** on stand with ligaments. Demonstrates Flexion, Extension and Rotation **Rs. 1,280 each**



HIM-8 Imported Craft. **Natural Heart** (Life size) Demonstrate External and internal anatomy of Heart Dissectable on stand **Rs. 1,850 each**



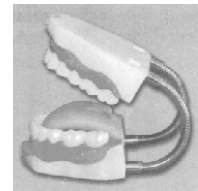
HIM-9 **Imported Human Torso** (Full size Nearly 3 feet Height) with 24 detachable parts for study. This is a full-size model finished to a very high standard. The posterior part of the model is open revealing details of the vertebral column and nervous system. The following parts can be taken out : two lung halves, heart, stomach, liver, large intestine, small intestine, appendix vermicularis, half kidney.



Back with open part of back from cerebellum to coccyx, with modelled truncus sympathicus, connections of vertebrae and ribs, nerves and part of medullas spinalis, Head detachable, eye and half-brain with arteries complete model is dissectible into twenty-four parts

Rs. 13,500 each

HIM-10 Imported big size **Tooth Set** with Tongue and Big size Brush—an ideal model for Dental Study **Rs. 2,550 each**

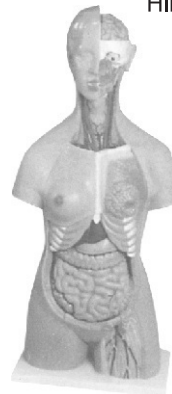


HIM-11 **CRAFT GIANT EYE MODEL**

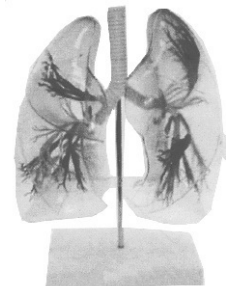
The different parts of the eyeball model are detachable to show the following structures.

- (a) Tunica external : Showing cornea and sclera with attachments of ocular muscles and optic nerve.
- (b) Tunica media : Showing the iris, the ciliary body and the chorioid.
- (c) Tunica internal is retina.
- (d) Refraction media : Showing the lens and the vitreous body

Rs. 1,950 each



HIM-10

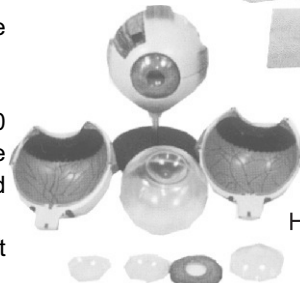


HIM-12 **Craft Model of the Transparent Lung Segment**

Made of transparent plastic—This model presents 10 segments in the right lung and 8 in the left. The distributions of the bronchial tree can be observed through the transparent lungs.

- (a) Distribution of the bronchial tree : right bronchus, left bronchus.
- (b) Hilus of lung.

Rs. 4,950 each



HIM-12

HIM-11

HIM-13 **Craft Giant Ear Model**

A giant model of the ear, for elementary science classes, show all major structures related to hearing and balance.

- (a) External ear.
- (b) Middle ear—showing the tympanic membrane the three auditory ossicles and the eustachian tube.



HIM-13

Biocraft's Imported Human Skeleton & Human Anatomical Models

- (c) Internal ear—showing the vestibule, cochlea and the three semicircular canals of the osseous labyrinth.
- (d) This model is dissected into 4 parts. 5 times enlarged. Mounted on plastic base. Size 17×10×6". **Rs. 2,100 each**

HIM-14 **Imported Nurse Training Doll (Female) Craft**
 Approximate 5 feet long made of rubberised PVC., joints are movable, body is dissectable with wide range of exercises including basic patient care and medical care with original attachee packing and with working manual. **Rs. 47,700 each**

HIM-15 **Imported Nurse Training Doll (Male) Craft**
 Approximate 5 feet long made of rubberised P.V.C. joints are movable, body is dissectable with wide range of exercises including basic patient care and medical care with original attachee packing and with working manual. **Rs. 47,700 each**

HIM-16 **Imported Foetal Skull**—Natural cast of specimen—undissectable. **Rs. 1,880 each**

HIM-17 **Imported Human Disarticulated Skull** with 11-parts showing detail of each bone of skull. **Rs. 3,100 each**

HIM-18 **Imported Human Pinkish Brain**—Dissectable into 8 parts giving minute details of human brain. **Rs. 1,750 each**

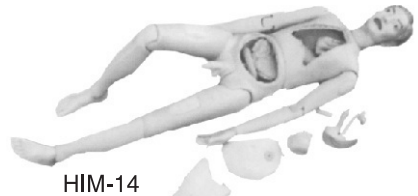
HIM-19 **Imported Human Anatomical Brain**—Horizontal sections—5 parts (slices) to show the detail anatomy of the brain. **Rs. 3,200 each**

HIM-20 **Human Vertebral Column with pelvic girdle**—Articulated life size. It shows all features of each vertebra, including spinal cord, nerve roots, artery etc. 72 cm. Tall with pelvis femur heads, sacrum and occipital bones. Complete on deluxe chrome stand. **Rs. 5,290**

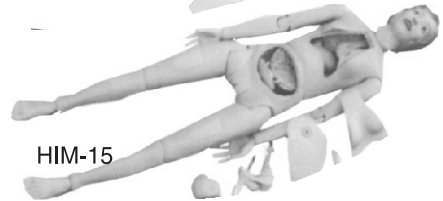
HIM-21 **Human foot joint** (life size)—on stand showing bones of the foot and ankle attached to tibia and fibia, tarsals and meta-tarsals and phalanges. **Rs. 1,300**

HIM-22 **Human hand joint** (life size) (on stand) showing carpals, metacarpals and phalanges. **Rs. 1,300**

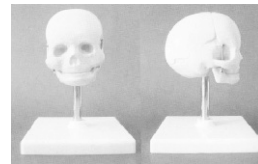
HIM-23 (A) **Human Adult Male Pelvis** (life size). **Rs. 1,820**
 (B) **Human Adult Female Pelvis** (life size). **Rs. 1,820**



HIM-14



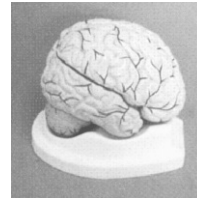
HIM-15



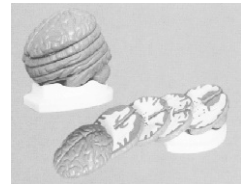
HIM-16



HIM-17



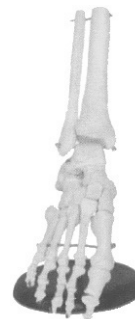
HIM-18



HIM-19



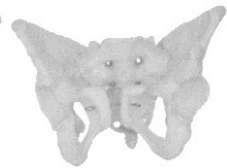
HIM-20



HIM-21



HIM-22



Biocraft's Imported Human Skeleton & Human Anatomical Models

	Comparison of Male pelvis	Female pelvis
* Pelvis shape	Long and narrow	Short and broad
* Pelvis cava	Like a funnel	Like a barrel
* Aperture pelvis		
superior	Heart-like	Rounded
* Sacrum	Long and narrow	Broad and short

HIM-24 **Human Stomach Model**—Double the natural size in L.S. The model shows the structure of the gastric fold, pyloric valve, pyloric sphincter muscles, gastric mucosa etc. **Rs. 1,700**

HIM-25 **Human Skin Model**—Highly enlarged mounted on plastic base. The model shows the subcutaneous layers with arteries, veins and deposits as well as dermis, epidermis, hair follicles, nerve endings, sweat glands, etc. **Rs. 1,990**

HIM-26A. **Human Liver on Stand** **Rs. 1,600**

HIM-26 **Human Liver, Pancreas and Duodenum Model**—To understand the roles the spleen, pancreas, and duodenum play in the process of digestion. Life size model mounted on stand. **Rs. 1,990**

HIM-27 **Human Male Urinogenital Systems**—A good demonstration model to understand the external features of the male urinogenital system showing kidney, urinary bladder, penis and testicle. Displayed on stand. **Rs. 1,850**

HIM-28 **Human Female Urinogenital Systems**—A good demonstration model of understand the external features of the female urinogenital system showing kidney, ureter, urinary-bladder, uterus, vagina, ovary, etc. Mounted on stand. **Rs. 1,850**

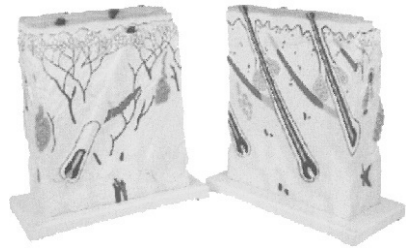
HIM-29 **Human Kidney**—Life size model with adrenal gland, renal and adrenal vessels and portion of the ureter. Dissectable in two parts to reveal the cortex medulla, cortex vessels and renal vein fitted on stand. **Rs. 1,750**

HIM-30 **Human Nasal Cavity Model**—It shows the nasal bones and cartilage. In nasal cavity it shows the lateral nasal wall, superior, middle and inferior nasal conchal project and nasal maxillary sinuses. **Rs. 1,250**

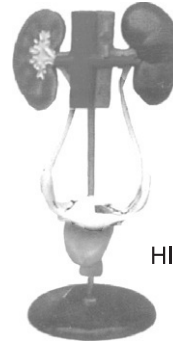
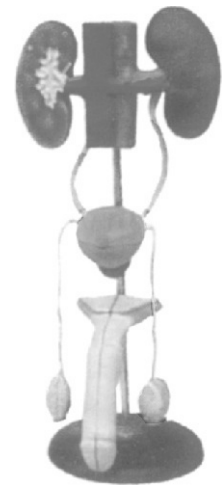
HIM-31 **Human New born-Baby Model**—Life size models with same characters. The head, upper limbs, lower limbs and joints are flexible. Made of soft PVC plastic washable. Length 52 cm. Head dia. 34 cm. **Rs. 2,280**



HIM-24

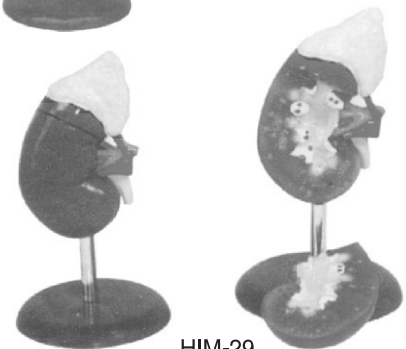


HIM-26



HIM-28

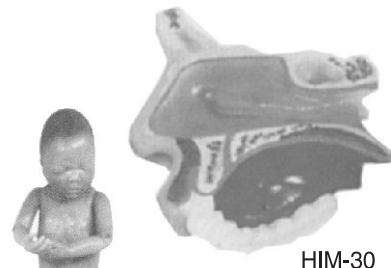
HIM-27



HIM-29

Biocraft's Imported Human Skeleton & Human Anatomical Models

HIM-32 Imported whole Body Basic CPR Mankin—An ideal model to be used in medical, paramedical, pharmacy colleges and other Bio medical studies. It is designed according to the international CPR standard. Stimulate the patient revivals through first aid by measures of heart pressure and mouth to mouth respiration. As soon as the patient revives his neck artery and heart recover, pulsate continuously, his enlarged pupils shrink to normal. The model also shows the operation is correct or not by signal indication language indication and grade printing. Complete model with electronic equipment and devices. **Rs. 84,250**



HIM-30

HIM-33 Imported Human Embryo Development (Foetus development) set of nine models—Human foetus with uterus-1 to 9 months showing details of embryonic development in gestation period. **Rs. 30,500**

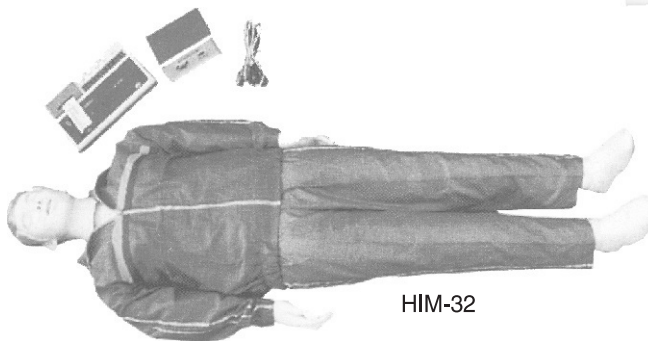


HIM-31

HIM-34 Imported Human Injectible Arm—The basic practice teaching model for intera muscular injection etc. Very useful for nursing schools, and medical colleges. **Rs. 3,800**



HIM-33



HIM-32

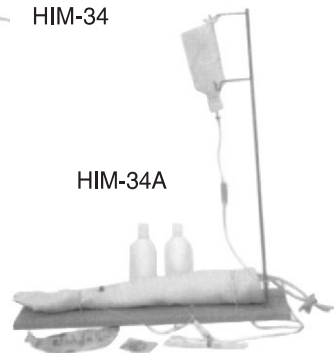


HIM-34

HIM-34A Injectible Training Model (With set)—This arm model can demonstrate the following items :

- (i) Vein phlebotomy on elbow forearm.
- (ii) Vein injection on elbow forearm.
- (iii) Vein blood transfusion on elbow forearm.
- (iv) Vein liquid transfusion on elbow forearm.
- (v) Muscular injection on deltoid on the side of upper limb.

Rs. 6,150



HIM-34A

HIM-38 Imported Human Races comparison Skull Model—A life size set of 6 skulls. Useful set for anthropology. There are :

- (i) Neanderthaltheus.
- (ii) Australopithecus Bosei.
- (iii) Homoerectus Pekinensis
- (iv) Homo-Sapiens Neanderthalensis.
- (v) Chimpanzee skull.
- (vi) Cromagnon skull.

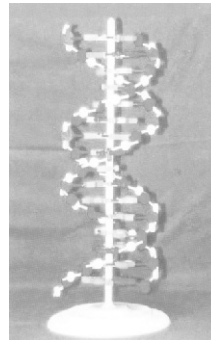
Rs. 12,200 set.



HIM-38

Biocraft's Imported Human Skeleton & Human Anatomical Models

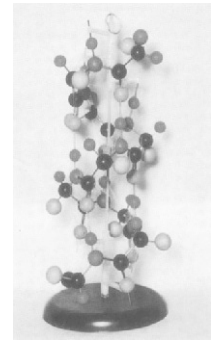
HIM-39 **Imported Model of big DNA Double Helix Model**—The reassemble is designed for building a simplified representation of a short segment of doubled stranded DNA. All pieces are made of plastic and identified by colours. Model is about 500 mm. Height containing 10 paired nucleotides. Mounted on plastic base. **Rs. 4,600**



HIM-39

Student can reassemble for practical purposes.

HIM-39A **Imported DNA Double Helix Model**—Same as HIM-39 but small size. **Rs. 1,800**

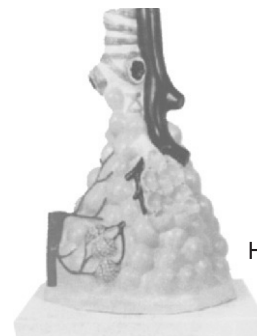


HIM-40

HIM-40 **Imported model of Secondary Protein Structures**—It provide as in depth look at protein synthesis. The model is made of plastic pieces and represented by colour and the whole model reassembled. **Rs. 4,600**

HIM-41 **Human Pulmonary Alveoli Model—Magnified**

- * The model shows the small branches of principal bronchus.
- * Selection of Bronchiole.
- * Relation between pulmonary aveoli and terminal bronchiole.
- * Structure of Alveolar sac and alveolar duct. **Rs. 1,700**



HIM-41

HIM-42 **Nurse Basic Practice Teaching Models—Set of 5 models**

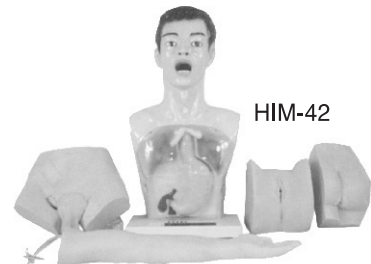
The model condemonstrate 15 operations.

1. Upper and front part of male body.
2. Left arm.
3. Male lower abdomen and perineum.
4. Female perinium.
5. Hip.

Rs. 21,000

HIM-43 **Nurse Training Multi Functional Patient Care Manikin**—The model is made of soft and half-hard PVC plastic. All joints are movable, the water can be belt, all parts can be disassembled. It can demonstrate following items :

1. Washing face and bathing the bed-ridden patient.
2. Care and cleaning of the mouth.
3. Care and cleaning of trachea dissection.
4. Inhalation of oxygen (nasal cork or nasal catheter).
5. Nasal lavage.
6. Stomach lavage.
7. Heart infection.
8. Heart resuscitating on chest.
9. Chest puncture.
10. Liver puncture.
11. Kidney puncture.
12. Abdomen puncture.
13. Medulla puncture.
14. Lumbar puncture.
15. Deltoid injection.
16. Deltoid hypodermic injection.
17. Vein injection.
18. Vein puncture.
19. Vein transfusion.
20. Vein blood transfusion.
21. Urethral catheterization of women.
22. Muscular injection on buttocks. **Rs. 25,000**



HIM-42



HIM-43

Biocraft's Imported Human Skeleton & Human Anatomical Models

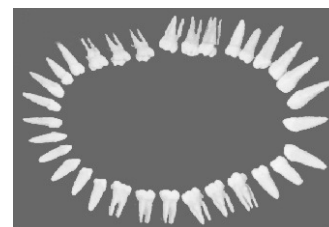
- HIM-44 **Imported Model of Archeopteryx Lithographica**—Model on base **Rs. 1,950**
- HIM-45 **Imported cast of Archeopteryx Lithographica**—From original cast from Britain Museum **Rs. 2,700**
- HIM-46 **Imported Human Digestive System** on plastic plate hanging type. Size **Rs. 5,350**
- HIM-47 **Imported Human Blood Circulatory System** on plate hanging type. Size **Rs. 5,500**
- HIM-53 **Huma Larynx** **Rs. 1,600**
- HIM-57 **Human Pumping Heart-3D**, working Plastic Model of Human Heart with clear **Rs. 1,660**
- HIM-59 **Human Female Pelvis Section-4** parts child with Uterus, Removable Fetus **Rs. 7,200**
- HIM-60 **Model of Course of Delivery**—Mechanism of normal labour, Cardinal movement, Internal rotation of head and many more **Rs. 26,250**
- HIM-65 **Contraception Guidance Model**—Used for contraception demonstration, showing Anatomical section of female genitalia **Rs. 2,970**
- HIM-95 **Birth Demonstration Model**—Female Pelvis with miniature skull **Rs. 2,620**
- HIM-97 **Human Male Pelvis Section**—Showing normal position of male genital organs



Cast of Actual fossil of Archeopteryx



Archeopteryx Fossil Model

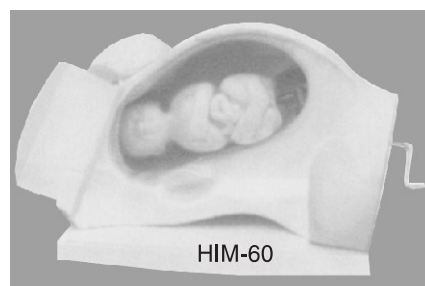


HIM48

Adult Human Teeth Confluence, 2 times, 32 pcs/set, Packing by Plastic bag

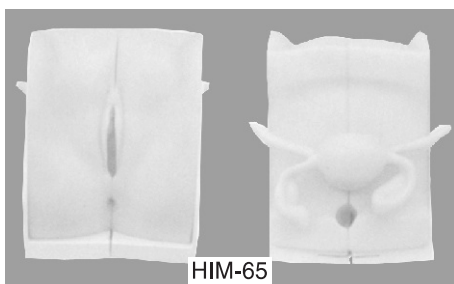


HIM-52

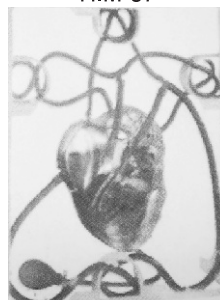


HIM-60

HIM-57



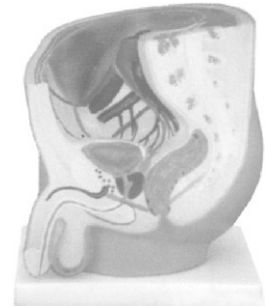
HIM-65



HIM-95

Biocraft's Imported Human Skeleton & Human Anatomical Models

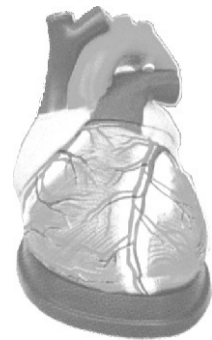
- HIM-98 **Human Female Pelvis Section**—Showing Female genital organs with Bladder and rectum **Rs. 2,600**
- HIM-99 **Half Body CPR Training (Male)**—This is a simple adult half body CPR training model, light and economical. Serves as ideal training aid for teaching and training CPR skills in hospitals, medical colleges and schools. **Rs. 2,600**
- HIM-100 **Whole Body basic CPR Manikin Style 400 (Advanced) Along with Printer**—This model is designed according to the international CPR standard. In this model there is inbuilt light indicator on the printer for the correct and incorrect Artificial respiration (mouth-to-mouth resuscitation) and correct and incorrect compression on the chest. The inbuilt LCD on the printer shows the electrocardiogram for the experiment done. These models simulate the patient revival through first aid by measures of heart pressure and mouth-to-mouth respiration. As soon as the patient revives, his neck artery and heart recover, pulsate continuously, his enlarged pupils shrink to normal. The model also shows whether the operation is correct or not by light indicator, signal indicator, language indicator and grade printing. An ideal model for use in Hospital; Medical College and Nurse Training Institutes. **Rs. 55,850**
- HIM-103 **Jumbo Human Heart Model**—4 times enlarged on base size 25×23×23cm. Dissectable in 3 parts **Rs. 1,20,500**
- HIM-105 **Human functional Eye**—With the flexible lens, the model can focus image on the retina. It Demonstrates far and short sight and their correction. **Rs. 2,450**
- HIM-107 **Advance Male Internal and External Organs**—e.g., rectum, seminal vesicle, bladder, prostate gland, urethral sphincter, meatus **Rs. 5,700**



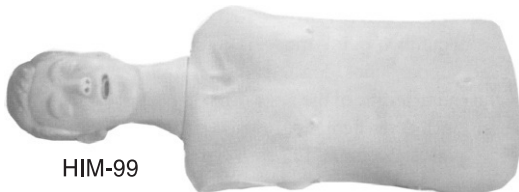
HIM-97



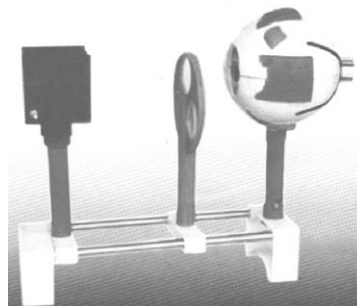
HIM-98



HIM-103



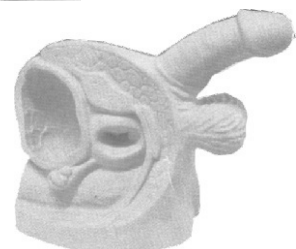
HIM-99



HIM-105



HIM-100



HIM-107

Biocraft's Imported Human Skeleton & Human Anatomical Models

and anus etc.
Rs. 2,880

Rs .

HIM-108 **Advance Female Internal and External Organs**—It demonstrate rectum, uterus, bladder, pelvic bone vagina, labium majora and anus.

Rs. 2,880

HIM-110 **Human Uterus Model (Magnified)**—Showing cervix into two parts, 8 ligamnts of uterus, the fallopian tube and ovaries

Rs. 1,400

HIM-112 **Human Placenta Model**—Showing the structure and relation will umblical cord. 7 positions are displayed

Rs. 3,200

HIM-115 **Midwifery Training Simulator (Vacuum delivery)**—It help to demonstrate all the process of delivery and skills of delivery

Rs. 25,500

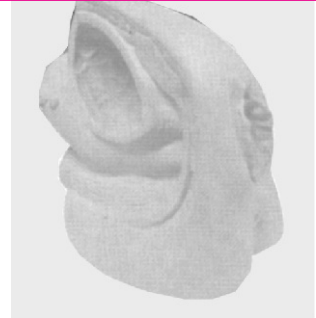
HIM-118 **Humanneron (Nerve Cell) Model**—Showing Neuronal body, nerve fibres, neuronal axon, dendritic arbor, neurofilament etc.

Rs. 5,450

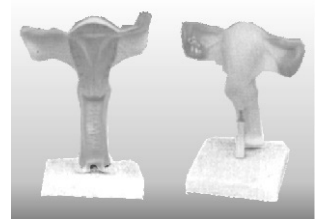
HIM-122 **Advance Infant CPR Training Mankin**—Complete model with electronic equipment and device. It is designed according to the International CPR Standard. In this Model there is light indicator display for correct and incorrect artificial respiration. There is light indicator display for correct compression position display or wrong compression position display. The model simulate the patient revival through first aid by measures of heart pressure and mouth to mouth respiration.

Rs. 82,800

HIM-125 **Advanced Child CPR Training Mankin**—Complete model with electronic equipment and deivce. This simulation of child model is designed according to the international CPR standard the model has a light indicator display for correct and incorrect artificial respiration (mouth-to-mouth).Correct compression position display and wrong compression position display. The model



HIM-108



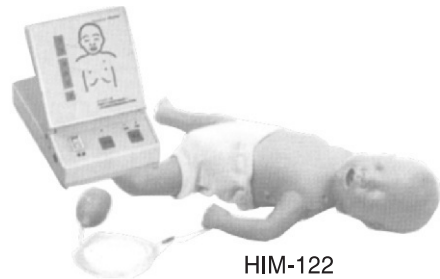
HIM-110



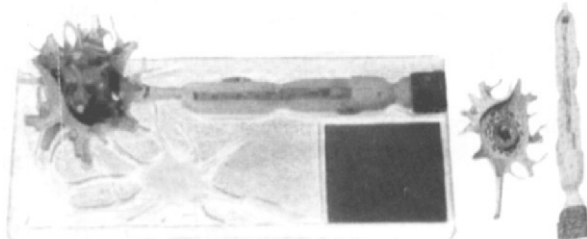
HIM-112



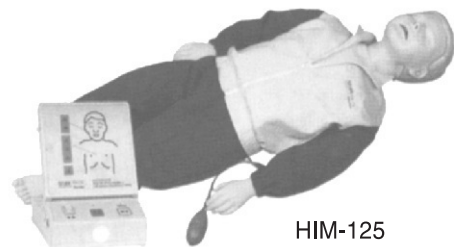
HIM-115



HIM-122



HIM-118



HIM-125