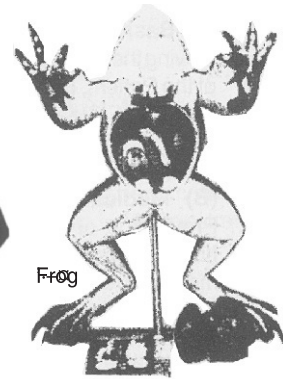
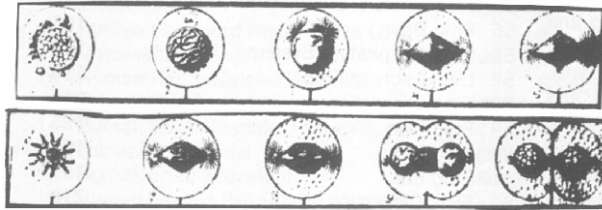


**Biocraft's Micro Models in Acrylic Dust Proof Box**

Craft Micro Models are in Dust proof Acrylic cover fully labelled. These are newly developed models for visual teaching aids and are colourful, small but having full details and every detail is fully labelled.



<b>CMM</b>		<b>Rs.</b>
1	Typical Animal Cell under electron microscope	450
2	Golgi body under electron microscope	450
3	Mitochondria under electron microscope	450
4	Nucleus	450
5	Types of Lysosomes set of 2 models	475
6	Endoplasmic Reticulum	425
7	Plastids Microscope structure	440
8	Typical Chromosome	440
9	Types of Chromosome- set of 3 models	600
10	Mitosis cell division set of 10 models	1,280
11	Meiosis cell division set of 10 models	1,280
11a	Animal Tissues set of 8 models	1,280

**DNA Models**

12	Double helical structure of DNA (Watson-Crick)	880
13	Biological structure of DNA	470
14	Replicating of DNA	900
15	Linking of nucleotides	595
16	DNA- set of 4 models	2,825
17	<b>Model of Big DNA Double Helix</b> made fibre glass (unbrokable ) on steel rods welded to shape on stand	2,480
18	<b>DNA Helix Model</b> —Same as above out of medium size	1,600

**RNA Models**

17	Helical structure of RNA	880
18	Mechanism of protein synthesis	800
19	Linking of nucleotides	595
20	RNA- set of 3 models	2,260
21	Showcase showing law of incomplete dominance in andalusion fowl	690
22	Showcase showing crossing over	690

<b>CMM</b>		<b>Rs.</b>
23	Showcase showing sex linked inheritance in poultry	690
24	Showcase showing origin and kinds of human twins	690
25	Structure of Carbohydrates	690
26	Chloride shift	820
27	Kreb's shift	950
28	Structure of Lipid	820
29	Showcase showing dihybrid cross	690
30	Showcase showing crossing over	690
31	Showcase monohybrid cross	690
32	Antigen and antibody reaction	770
33	Transcription—Obtaining a gene from mRNA	880

**General Zoological Models**

**Protozoa**

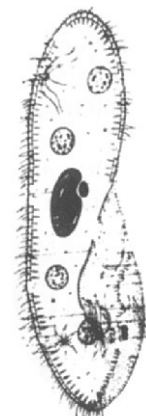
34	Amoeba	455
35	Paramecium	455
36	Euglena	455
37	Malaria parasite life cycle	925
37a	Trypanosoma	455
38	Trypanosoma life cycle	925

**Porifera**

39	Sycon L.S.	580
40	Canal System -set of 4	1,280
41	Grantia with bud	560
42	Types of Sponge Spicules	835

**Coelentrata**

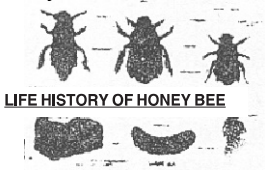
43	Hydra with bud	445
44	Hydra L.S. with bud	445
45	Obelia medusa	625



Paramecium

**Biocraft's Micro Models in Acrylic Dust Proof Box**

<b>CMM</b>	<b>Rs.</b>	<b>CMM</b>	<b>Rs.</b>
46 Obelia colony	715		
47 Dissection of of sea anemone	840		
<b>Platyhelminthes</b>			
48 Tapeworm (2 models)	580		
49 Tapeworm scolex	445		
50 Tapeworm L.H.	790		
51 Ascaris male & female	760		
52 Ascaris T.S. Male and Female	760		
53 Liver fluke	480		
54 Liver fluke L.H.	940		
<b>Annelida</b>			
55 Earthworm dissection	940		
56 Earthworm blood circulation	880		
57 Earthworm reproductive system	880		
58 Earthworm copulating	625		
59 Leech set of 2 models	850		
60 Leech T.S.	470		
<b>Arthropoda</b>			
61 Cockroach dissection	915		
62 Cockroach digestive system	780		
63 Cockroach mouth parts	780		
64 Cockroach Nervous system	780		
65 Cockroach Reproductive system male	780		
66 Cockroach Reproductive system female	780		
67 Cockroach Nervous system	780		
68 Cockroach L.H.	900		
69 Housefly (Adult female)	720		
70 Housefly L.H.	900		
71 Honeybee L.H.	900		
72 Silkworm L. H.	900		
73 Anopheles Mosquito L.H.	900		
74 Anopheles mouth parts male & female	780		
75 Culex Mosquito L.H.	900		
76 Culex mouth parts male & female	780		
77 Butterfly L.H.	900		
78 Prawn dissection	850		
79 Prawn Nervous system	780		
80 Lac insect L.H.	900		
<b>Echinodermata/Mollusca</b>			
81 Dissection of Starfish	820		
82 Echinoderm larvae -set of 7 models	1,200		
83 Pila dissection	720		
84 Pila Nervous system	650		
85 Unio dissection	800		
<b>Protochordata</b>			
86 Amphioxus structure	750		
87 Amphioxus Development (set of 10 models)	1,500		
88 Hardmania structure internal	900		
88 (a) Balanoglossus	485		
<b>Fishes</b>			
89 Dissection of Dog fish	880		
90 Dissection-Typical bonyfish	880		
91 Brain of Fish	410		
92 Heart of Fish	410		
93 Lung Fishes -set of 3 models (Lepidosiren, Protopterus, Neocertodus) set	2,270		
(a) Lung Fish Lepidosiren	755		
(b) Lung Fish Protopterus	755		
(c) Lung Fish Neocertodus	755		
<b>Amphibia</b>			
94 Dissection of Frog	725		
95 Frog Arterial system	595		
96 Frog Venous system	595		
97 Frog Nervous system	595		
98 Frog Digestive system	595		
99 Development of frog	790		
100 Frog Brain	380		
101 Frog heart	380		
102 Frog's male Urinogenital system	550		
103 Frog's female Urinogenital system	550		
104 Frog Skin	410		
105 Frog eye	410		
106 Frog Buccal cavity	460		
107 Frog Respiratory system	560		
108 Frog Spermatogenesis	845		
109 Frog Oogenesis	845		
110 Frog Excretory system	670		
<b>Reptilia</b>			
111 Reptile brain	440		
112 Reptile eye	440		
113 Reptile heart	440		
114 Reptile skin	440		
115 Reptile kidney	440		
116 Dissecton of lizard	925		
117 Poisonous & Non poisonous snakes	1,100		
118 Mouth showing poisonous gland of Cobra	700		
118 (a) Cobra	910	(b) Viper	910
(c) Krait	910	(d) Dhaman	910
(e) Varanus	910		



**Biocraft's Micro Models in Acrylic Dust Proof Box**

**CMM**

**Aves**

119 Aves brain	445
120 Aves eye	445
121 Aves ear	445
122 Aves heart	445
123 Dissection of chick	950
124 Development of bird feather	1,150
125 Development of chick	1,250
126 Urinogenital system of birds	850
126 (a) Perching Mechanism	850

**Mammals**

127 Mammal brain	425
128 Mammal skin	425
129 Mammal kidney	425
130 Mammal heart	425
131 Mammal eye	425
132 Mammal ear	425
133 Dissection of Rabbit	850



**Rats**

134 Dissection of Rat	850
135 Rat digestive system	720
136 Rat Venous system	720
137 Rat Arterial system	720
138 Rat Male Urinogenital system	720
139 Rat Female Urinogenital system	720

**Model of Rare Living Animals**

**Reptiles**

140 Aligator	1,150
141 Chameleon	830
142 Cobra (Naja)	910
143 Crocodial	1,150
144 Dhaman (Rat Snake)	910
145 Draco (Flying Lizard)	880
146 Gavialis	1,150
147 Heloderma	950
148 Krait	910
149 Russell Viper	910
150 Varanus (Monitor)	1100
151 Wall Lizard	750

**Birds**

152 Bulbul	780
153 Crow	780
154 Emu	1,150
155 Eubo (Owl)	780
156 Hoopoe	780
157 House Sparrow	750

**CMM**

158 Kiwi Apteryx	880
159 Kingfisher	750
160 Koail	750
161 Ostrich	1,100
162 Parrat	750
163 Penguin	1,100
164 Peacock	1,100
165 Piegion	750
166 Sparow	750
167 Woodpecker	750



Duckbill



Hippopotomus



Kangaroo

**Mammals**

168 Armadillo	1100
169 Bat	850
170 Cammel	1,150
171 Deer	1,200
172 Dolphin	1,150
173 Elephant	1,100
174 Echidna (Spiny Ant Eater)	1,100
175 Gorilla	950
176 Giraffe	1,100
177 Hedge Hog	880
178 Hippopotomus	1,100
179 Kangaroo with baby	1,250
180 Koala	1,100
181 Kangaroo Rat	850
182 Lion	1,100
183 Loris	950
184 Marsupial moie	600
185 Mangoos	1,200
186 Opposum	950
187 Platypus (Duck Bill)	950
188 Parcupine	1,200
189 Pahgolin (Scaly Ant Easter)	1,200
190 Red Panda	1,100
191 Rhinoceros	1,200
192 Rabbit	850
193 Seal	1,100
194 Squirrel	850
195 Tiger	1,100
196 Wompat	1,100
197 Zebra	1,150



Opposum



Pangolin



Spiny ant eater

**Vertebrate Comparative Study**

196 Comparative model set of vertebrates hearts-set of 5	1,980
197 Comparative model set of vertebrates Brains-set of 5	1,980
198 Comparative model set of vertebrates Respiratory system-set of 5	2,600
199 Comparative model set of vertebrates Urinogenital system-set of 5	2,600
200 Comparative model set of vertebrates Germinal layers-set of 5	2,800

**Biocraft's Micro Models in Acrylic Dust Proof Box**

<b>CMM</b>	<b>Rs.</b>	<b>CMM</b>	<b>Rs.</b>
201 Comparative model set of Nervous systems-set of 5	<b>2,600</b>	221 Human Stomach	<b>450</b>
202 Comparative model set of vertebrates Excretory system-set of 5	<b>2,600</b>	222 Human Male Reproductive Organs	<b>640</b>
<b>Evolution</b>		223 Human Female Reproductive Organs	<b>640</b>
203 Evolution of man-set of 4 models	<b>2,310</b>	224 Human Nose	<b>450</b>
204 Evolution of EMBRYOS	<b>4,290</b>	225 Human tongue	<b>450</b>
205 Evolution of HORSE	<b>3,795</b>	226 Human Digestive system	<b>872</b>
206 Evolution of ELEPHANT	<b>3,795</b>	227 Human Circulatory system	<b>960</b>
207 TRILOBITE CAST	<b>572</b>	228 Human Teeth with lower jaw	<b>570</b>
208 DINOSAURS (any) (each)	<b>1,210</b>	229 Human Larynx	<b>570</b>
209 Homologous organs	<b>1,050</b>	230 Human Excretory system	<b>960</b>
210 Analogous organs	<b>1,050</b>	231 Human Respiratory system	<b>960</b>
<b>Human Anatomy (Micro Models)</b>		232 Human Endocrine glands	<b>960</b>
211 Sexless torso with head (human body)	<b>2,135</b>	233 Human Vestigial organs	<b>1,200</b>
212 Human Brain -set of 2 models	<b>860</b>	<b>Bacteria &amp; Virus</b>	
213 Human Heart -set of 2 models	<b>860</b>	234 Coccus Bacteria-Enlarged	<b>490</b>
214 Human eye with orbit	<b>640</b>	235 Bacteria—set of 16	<b>810</b>
215 Human eye with muscles	<b>450</b>	236 Bacillus-Bacteria	<b>440</b>
216 Human ear	<b>640</b>	237 Spirillum Bacteria -Enlarged	<b>440</b>
217 Human skin	<b>470</b>	238 Structure of typical Bacteria	<b>440</b>
218 Human Lungs with heart	<b>640</b>	239 Disease causing Bacteria of Man set of 12 Models	<b>1,150</b>
219 Human Liver with gall bladder	<b>450</b>	240 Virus—Polyhedral symmetry	<b>450</b>
220 Human Kidney L.S.	<b>450</b>	241 Virus—Tobacco Mosaic Virus (TMV)	<b>450</b>
		242 Virus—Bacteriophage	<b>580</b>
		243 AIDS Virus (HIV Human)	<b>580</b>

**Biocraft's Nursing Charts**

Rigid Lamination on board with Aluminium frame and Hanging clip.

**Size 51 × 66 cm**

**Cost of each chart Rs. 1230.00**

CNC-1 Breast Changes in Pregnancy	CNC-15 Congenital Malformation of New Born
CNC-2 Uterine Changes in Pregnancy	CNC-16 Cleft Lip-Plate
CNC-3 First Stage of Labour	CNC-17 Spina Bifida
CNC-4 Second Stage in Labour	CNC-18 Hydrocephalus
CNC-5 Third Stage in labour	CNC-19 Anencephalus
CNC-6 Complete Breech Presentation	
CNC-7 Incomplete breech Presentation	
CNC-8 Foot Presentation	
CNC-9 Shoulder Presentation	
CNC-10 Face Presentation	
CNC-11 Brow Presentation	
CNC-12 Twin Pregnancy	
CNC-13 Placenta Praevia	
CNC-14 Caput Succedaneum, Cephalhaematoma	

