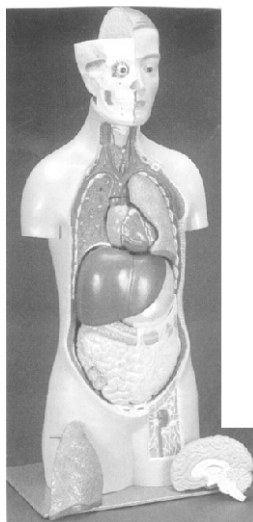


Biocraft's Human Anatomy Unbreakable Fibre Glass Models

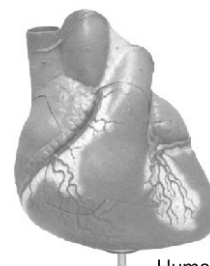
These models are scientifically designed in natural colour. Made out of these glass unbreakable and light in weight. Mounted on Board with Labels.



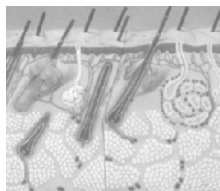
PFM-1



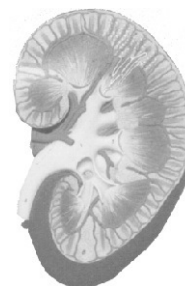
Human eye



Human Heart



Human skin



Human Kidney

PFM	Rs.	PFM	Rs.
1	Human Sex less torso with head — (Made of unbreakable fibre glass) This full size sexless human torso is dissectable into fourteen parts. The brain can be lifted to show inner structure and is removeable together with half of the rib cage and costal cartilages. Removeable organs include heart, stomach, liver, large intestine, small intestine, pancreas, bladder and kidney fixed on polished board. 3,650	15	Human Skin —Large 825
2	Female torso with head —Same as BFM-1 but with female organs fully dissectable. 5,100	16	Human Lung —Two parts 410
3	Male torso with head —Same as BFM-1 but with male organs fully dissectable. 5,100	17	Human Lung with Heart —Four parts 850
4	Torso with head —Sexless (Fibre glass) small size Detail same as above. 1,700	18	Human Kidney 410
5	Human Heart —Fibre Glass unbreakable Two parts. 395	19	Human Kidney —Large on board 640
6	Human Heart —Fibre Glass—Four parts. 550	20	Human Brain —Life size two parts 395
7	Human Heart —Large size—Six parts. 645	21	Human Brain —Four parts 590
8	Human Heart Jumboo 1,650	22	Human Brain —Eight parts 1,150
9	Human Eye —Seven parts medium 395	23	Human Head and Neck with Muscles 650
10	Human Eye —Seven parts large 730	24	Human Larynx —Two parts 520
11	Human Eye with orbit large 810	25	Human Teeth with Jaw 520
12	Human Ear —Medium three parts 395	26	Human Teeth with Upper and Lower Jaw 620
13	Human Ear —Seven parts large 1,480	27	Human Teeth with Tongue 540
14	Human Skin —Medium 410	28	Human Digestive System 22"×9" 700
		29	Human Digestive System 36"×15" 1,435
		30	Human Circulatory System 22"×9" 700
		31	Human Circulatory System 36"×15" 1,435
		32	Human Respiratory System 22"×9" 700
		33	Human Respiratory System 36"×15" 1,435
		34	Human Nervous System 22"×9" 700
		35	Human Nervous System 36"×15" 1,500
		36	Human Liver with Gall Bladder 520
		37	Human Stomach —Two parts 510
		38	Human Nose —Two parts 510
		39	Human larynx —Six parts 1200

Biocraft's Human Anatomy Unbreakable Fibre Glass Models

40	Human Full Arm—30"×10"	1100
41	Human Full Leg—36"×12"	1150
42	Human Hand Joint	1,200
43	Human Knee Joint	1,200
44	Human Foot Joint	1,200
45	Human Hip Joint	1,200
46	Human Shoulder Joint	1,200
47	Human Endocrine Glands	1,550
48	Human Spinal Cord	830
49	Human Skull with Brain	1,350
50	Human Tongue	500
51	Human Nerve Cell (Neurone)	640
52	Human Endocrine System	1,550
53	Human Pancreas	1,250
54	Human Spleen	850
55	Human Muscular System 22"×9"	1,400
56	Human evolution of Man (set of 4 models)	2,400
57	Human full size fibre glass skeleton	2,550
58	Human full size fibre glass skeleton with stand articulated	3,600
59	Human full size fibre glass skeleton disarticulated	2,100

Human Reproduction Models

60	Human Reproductive Organs Male 16"×12"	725
61	Human Reproductive Organs Female 16"×12"	725
62	Human Featel Circulatory System	1,750
63	Human New Born Baby with Placenta	1,065
64	Human Placenta—Large size	825
65	Human Pelvis with Faetal Head	9,380
66	Human Faetal Skull	515
67	Human Delivery Model Set—set of 8	6,620
68	Human Development Process— set of 9 models	3,100
69	Human Female Pelvis with Baby	1,900
70	Human Female Pelvis with Faetal Head	1,700
71	Human Female Dummy with Doll	3,950
72	Uterus Sagittal Section with Follopian tube	850
73	Uterus in Section Showing Sperm and Ovum in Process of Fertilization	1,560
74	Structure of Human Sperm	1,200
75	Vasectgomy	1,400
76	Tubectomy	1,400

**Biocraft's Chase Doll (Full Size)
(Nurse Training Doll)**

110 **Manufactured as per Nursing Council's Specification—Made from fiber glass, water**

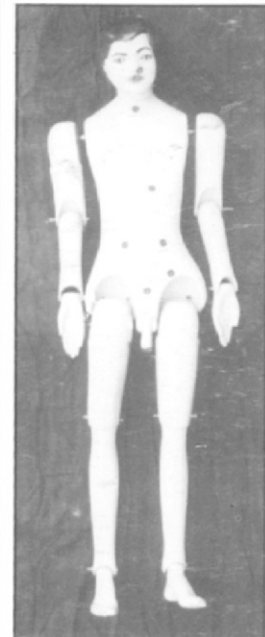
proof, unbreakable, very useful for para medical, Nursing and Medical Colleges to demonstrate the following :

(a) Hair on Head for washing; (b) Legs and Arms are flexible. Head is moveable in all direction; (c) Nasal Passage for Oxygenation; (d) Tracheo-stomy to show mechanical ventilation; (e) Ear Passage for Ear washing; (f) Oral Passage for liquid food or stomach washing; (g) Gastrostomy for administering food & fluids into the stomach; (h) Tank in stomach to store liquid passed; (i) Passage for Colostomy, Casecostomy and Surpa Public Cystostomy; (j) Rectal passage for anema; (k) Urethral office for Catherisation; (l) Vaginal passage for Douching; (m) Buttock & Deltoid Region of one side for injection purpose; (n) Site for intravenous injection in arm; (o) Central Venous Catheterisation Locations; (p) Side tap for draining all liquid from the doll; (q) An amputation stump allows practicing of stump dressing

1. Adult-5-1/2 feet long-Female/Male **16,500**
2. Nursing Doll-Male or Female
Export Quality **19,500**
3. Child-(9-14 years Old) **15,500**
4. Foetal-(9 months Old) **4,100**



Female Dummy
(with injection facility)

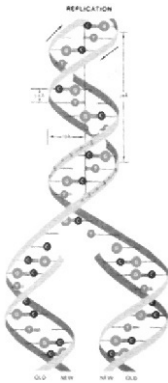


Male Dummy
(with injection facility)

Biocraft's Human Anatomy Unbreakable Fibre Glass Models

Biocraft's Fibre Glass General Zoology Models

112	Animal cell under Electron microscope	395
113	Amoeba	395
114	Paramecium	395
115	Euglena	395
116	Rabbit-General Dissection	660
117	Hydra	550
118	Frog Digestive System	455
119	Frog Arterial System	455
120	Frog Venous System	455
121	Frog Male Urinogenital Organs	455
122	Frog Female Urinogenital Organs	455
123	Frog Brain	455
124	Frog Respiratory System	455
125	Life History of Frog	700
126	Frog Dissection	455
127	Frog Skin	455
128	Frog Heart	455
129	Frog Ear	455
130	Fish Dissection	930
131	Life History of silk worm	660
132	Life History of House-fly	660
133	Life History of Mosquito	660
134	Life History of Honey-Bee	660
135	Life cycle of Tape worm	660
136	Life History of Butterfly	660
137	Cockroach-Circulatory system	660
138	Cockroach-Digestive system	660
139	Cockroach-Reproductive system	660
140	Earthworm-Circulatory system	660
141	Earthworm-Reproductive system	660
142	Earthworm-Nervous system	660



143	Earthworm-Dissection	660
144	Earthworm-Digestive system	660
145	Earthworm-Excretory system	660
146	Frog Buccal cavity	660
147	Frog Lungs	455
148	Frog Kidney	455
149	Tape worm	455
150	DNA models set of 4 on board (per set)	1290
151	RNA models set of 4 models (per set)	1290
152	Liver Fluke Adult	650
153	Liver Fluke L.H.	1020
154	L.H. of Malaria Parasite	1020
155	L.H. of Bacteria	820
156	Animal Mitosis—set of 10	1160
157	Animal Meiosis—set of 10	1160
160	Model of Big DNA Double Helix Model Made of Fibre Glass (unbreakable) on Steel Rods welded to shape. Large Model on Stand	2480
162	Model of Medium DNA Double Helix Model of Fibre Glass (un breakable). Same as above	1600



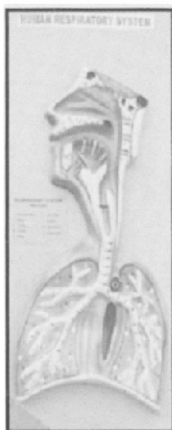
Human Kidney



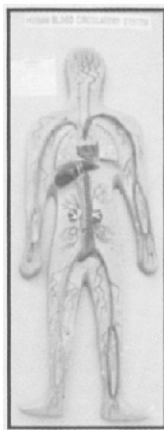
Human Eye



Human Heart



Human Respiratory



Human Circulatory



Human Nervous



Human Skeleton System



Human Digestive



Human Skelton