

Biocraft's Botany Plastic Embedded Specimens

A resinmount is a block of Crystal Clear Caroplastic. The mounts are permanent and permit object viewing from all six sided. These can be safely handled by students and easy for storage and display.

Algae

- | | |
|------------------------------|-----|
| 1. Acetabularia | 320 |
| 4. Chara | 320 |
| 5. Codium | 320 |
| 7. Caulerpa plant | 320 |
| 8. Corallina | 320 |
| 9. Cutlaria | 320 |
| 10. Dictyota | 320 |
| 12. Fucus imported male USA | 425 |
| 13. Fucus imported (F) (USA) | 425 |
| 14. Gelidium | 320 |
| 15. Laminaria | 320 |
| 16. Nitella | 320 |
| 18. Padina | 320 |
| 21. Sargassum fertile | 320 |
| 22. Ulva thallus | 320 |
| 24. Valonia | 320 |



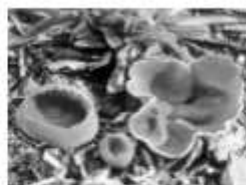
Fungi

- | | |
|-----------------------------|-----|
| 26. Alternaria | 320 |
| 27. Albugo conidial on leaf | 320 |
| 28. Albugo sexual on fruit | 320 |
| 29. Albugo hypertrophy | 320 |
| 30. Agaricus | 320 |
| 31. Apple rust | 340 |
| 33. Bracket fungus | 340 |
| 34. Bean rust Uromyces | 340 |
| 38. Colletotrichum | 290 |
| 39. Citrus canker | 320 |
| 40. Cercospora | 320 |
| 41. Lycoperdon | 320 |
| 42. Melampsora (Linseed) | 320 |

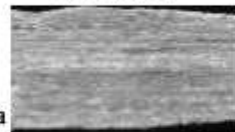


Albugo conidial on leaf

- | | |
|-----------------------------------|-----|
| 44. Morchella | 320 |
| 46. Peziza clusters | 320 |
| 47. Phytophthora on Potato leaf | 320 |
| 49. Polyporus | 320 |
| 51. Protomyces on Coriander | 320 |
| 52. Phyllactinia | 320 |
| 53. Puccinia on wheat leaf | 320 |
| 54. Puccinia barbary | 320 |
| 57. Ring spot of brassica | 320 |
| 59. Synchytrium on leaf | 320 |
| 60. Synchytrium on fruit | 320 |
| 61. Sphaerotheca on jawar | 320 |
| 64. Ustilago (U. Avenae) | 320 |
| 65. Ustilago covered smut | 320 |
| 66. Ustilago loose smut (Tritici) | 320 |
| 68. Ustilago sugar-cane | 320 |
| 69. Uromyces | 320 |
| 70. Xylaria | 320 |



Peziza clusters



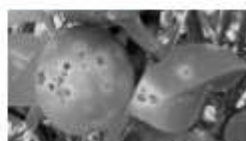
Puccinia on wheat leaf



Ustilago covered smut

Bacteria and Virus Plants

- | | |
|---|-----|
| 71. Citrus canker | 320 |
| 72. Root Nodules | 320 |
| 73. Leaf curl of tomato | 320 |
| 74. Leaf curl of chilles | 320 |
| 75. Leaf curl of papaya | 320 |
| 76. Leaf curl of Tobbaco | 320 |
| 82. Virusus Cariea papaya (Leaf curl of papaya) | 320 |



Citrus canker

- | | |
|--------------------------|-----|
| 238. Rhizome | 340 |
| 239. Cladode Asparagus | 340 |
| 241. Bulbils of Agave | 340 |
| 242. Bulbil of Dioscorea | 350 |

Inflorescence and Flowers

- | | |
|-----------------------|-----|
| 251. Raceme Typical | 340 |
| 252. Spike Typical | 340 |
| 253. Simple Spadix | 340 |
| 254. Catkin Typical | 340 |
| 256. Corymb | 340 |
| 257. Umbel Typical | 340 |
| 259. Capitulum | 340 |
| 260. Scorpoid Cyme | 340 |
| 261. Helicoid Cyme | 340 |
| 262. Dichasial Cyme | 340 |
| 263. Polychasial Cyme | 340 |
| 264. Hypanthodium | 340 |

- | | |
|--------------------------|-----|
| 265. Cyathium | 340 |
| 266. Verticillaster | 340 |
| 267. Aristolochia Flower | 340 |

Fruits

- | | |
|------------------------|-----|
| 274. Capsule of Poppy | 320 |
| 276. Double Samara | 320 |
| 277. Follicle | 320 |
| 281. Nut of Oak | 320 |
| 282. Nut of Anacardium | 320 |
| 283. Regma | 320 |
| 284. Siliqua | 320 |
| 285. Silicula | 320 |

Hydrophytic Plants

- | | |
|-----------------|-----|
| 287. Eichhornia | 320 |
| 288. Elodea | 320 |
| 289. Jussiaea | 340 |

Biocraft's Botany Plastic Embedded Specimens

Plant Pathology Specimens

- 83. Blast of Rice 320
- 84. Brown spot of Rice 320
- 85. Bacterial blight of Rice 320
- 86. Black rust of Wheat 320
- 87. Brown/Orange rust of Wheat 320
- 88. Club root of Crucifers 320
- 89. Citrus canker 320
- 90. Downy mildew on Grapes 320
- 91. Ergot of Barley 320
- 94. Green Ear of Bajra 320
- 95. Loose smut of Wheat 320
- 97. Leaf spot on Sorghum 320
- 99. Late blight of potato 320
- 100. Mosaic of papaya 320
- 101. Mosaic of tomato 320
- 102. Mosaic of chillies 320
- 103. Mosaic of tobacco 320
- 108. Powdery mildew on Pea 320
- 109. Smut of Bajra 320
- 111. Tikka disease of Groundnut 320



Mosaic of papaya

Lichens

- 112. Lichen apothecia 320
- 113. Lichen Usnea fertile 320
- 114. Lichen Parmelia fertile 320
- 117. Lichen Cladonia fertile 320

Bryophyta

- 121. Anthoceros sporophyte 320
- 125. Dumortiera fertile 320
- 126. Fossombronia fertile 320
- 128. Lunularia gemma cup 320
- 129. Marchantia with gemma cups 320
- 130. Marchantia with antheridia 320
- 131. Marchantia with archegonia 320
- 132. Marchantia with sporophytes 320
- 142. Polytrichum fertile 320
- 143. Pogonatum fertile 320
- 144. Sphagnum fertile 320



Marchantia with gemma cups

Pteridophyta

- 145. Azolla with sporocarps 340
- 146. Equisetum young plant with sporophyte 340
- 147. Fern Prothallus with Sporophyte 340
- 148. Fern Adiantum fertile twig 340
- 154. Fern Pteridium fertile 340
- 164. Lycopodium with cone 340
- 165. Lycopodium selago 340
- 166. Lycopodium phlegmeria 340
- 169. Lycopodium clavatum 340

- 170. Lycopodium cernum 340
- 171. Marsilea fertile plant 340
- 172. Ophioglossum plant 340
- 173. Psilotum with synangia 340
- 174. Selaginella fertile plant 340



Lycopodium with cone

Gymnosperm

- 176. Cycas female cone 460
- 177. Cycas microsporopyll 320
- 178. Cycas megasporopyll 320
- 180. Pinus male cone 320
- 181. Pinus female cone 340
- 182. Gnetum twig with leaf 340
- 183. Cedrus with male cone 340
- 184. Cedrus with female cone 340
- 185. Thuja with male cone 340
- 186. Thuja with female cone 340
- 187. Araucaria male cone 340
- 188. Araucaria female cone 340
- 189. Zamia female cone 390
- 194. Gnetum male cone 340
- 195. Gnetum female cone 340
- 197. Ginkgo twig with leaf 460
- 198. Ginkgo male cone 460
- 199. Ginkgo female cone 460
- 201. Taxus male cone 340
- 202. Taxus female cone 340
- 203. Ephedra male cone 340
- 204. Ephedra female cone 340



Pinus male cone

Insectivorous Plants

- 217. Utricularia 340
- 218. Drosera indica 340
- 219. Drosera burmani 340

Parasitic Plants

- 220. Balanophora 440
- 221. Cuscuta with Host 440
- 223. Orobranchie 440
- 224. Loranthus with Host 440
- 226. Viscum Album with Host 440

Root Morphology

- 227. Bulb 340
- 228. Lemna (Leaf like floating stem) 340
- 229. Offset-Pistia 340
- 231. Phylloclade of Opuntia 340
- 232. Phylloclade of Acaccia 340
- 233. Phylloclade of Muchlenbeckia 340
- 234. Phylloclade of Ruscus 340
- 236. Phylloclade of Parkinsonia 340
- 237. Runner 340