

Biocraft's Bio-visual Charts

Bio-Visual Charts are made of water proof-reinforced PVC Sheeting (Rexine) which is flexible and wrinkle free. An experienced team of Scientists and Artists discuss and research the subject in R & D Wing so as to produce authentic and accurate drawings.

Several aspects each subject are reproduced in great detail with bold labelling so that each diagram is informative as well as self-explanatory.

Size – 125 × 100 cm

AA = 435, BB = 585, CC = 630

Cytology

Bi 9	Cell Membrane & Cell wall	CC
Bi 10	Endoplasmic Reticulum	CC
Bi 11	Mitochondrion	CC
Bi 12	Golgi Complex	CC
Bi 13	Chloroplast	CC
Bi 14	Nucleus	CC
Bi 15	Chromosomes	CC
Bi 31	Structure of Cillium & Flagellum	CC
Bi 80	Ribosomes & Lysosomes	CC

Genetics

Bi 4	Monohybrid Cross complete dominance	CC
Bi 5	Monohybrid Cross-Incomplete Dominance	CC
Bi 6	Forms of Comb in Fowl	CC
Bi 7	Dihybrid Ratio	CC
Bi 8	Linkage	CC
Bi 51	Mutations	CC
Bi 52	Chromosomal Aberrations	CC
Bi 53	Colour Blindness & Hemophilia	CC
Bi 60	Genetic Code	CC
Bi 99	Mendelism	CC
Bi 126	Cytoplasmic Inheritance	CC
Bi 127	Sex Linked Inheritance	CC
Bi 131	Crossing Over	CC
Bi 141	Plasma Membrane	CC
Bi 147	Epistatic Interaction	CC
Bi 311	Gen e Therapy (Invitro and Invivo)	CC
Bi 312	Mendelian Disorder-I	CC
Bi 313	Mendelian Disorder-II	CC

Parasitology

Bi 32	Tuberculosis	CC
Bi 33	Typhoid	CC
Bi 34	Diphtheria	CC
Bi 35	Diarrhoea	CC
Bi 36	Filariasis	CC
Bi 37	Leprosy	CC
Bi 38	Pathogenic Protozoa	CC
Bi 39	E. Coli	BB
Bi 54	AIDS	CC
Bi 308	Measels	CC
Bi 309	Cholera	CC

Z-195	Life Cycle of Ancylostoma	CC
Z-200	Trichinella Spiralis	CC
Z-207	Leishmania Donovanii	CC

Physiology

Bi 1	Photosynthesis Light Reactions	CC
Bi 2	Integration of Carbohydrate, Fatty Acid and Amino Acid Anabolism-Dark Reactions	CC
Bi 3	Integrations of Carbohydrate, Fatty Acid and Amino Acid Catabolism	CC
Bi 55	Osmosis, Plasmolysis & Diffusion	CC
Bi 56	Gluconeogenesis & HMP pathway	CC
Bi 81	Active & Passive Transport	CC
Bi 82	Fatty Acid Oxidation & Regulation	CC
Bi 115	pH Colour Chart	CC

General

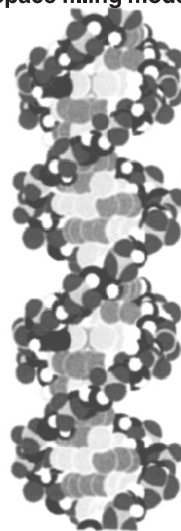
Bi 20	Microscope	CC
Bi 21	Gametogenesis	CC
Bi 22	Water Cycle	CC
Bi 23	Pond Ecosystem	DD
Bi 24	Carbon Cycle	CC
Bi 25	Nitrogen Cycle	CC
Bi 18	DNA 8 loops (7 × 3 feet)	2CC
Bi 19	DNA Structure	CC
Bi 26	RNA Types Transcription and Translation	CC
Bi 27	RNA Structure	CC
Bi 28	Protein synthesis	CC
Bi 29	Urea Cycle	CC
Bi 30	Vitamins : Sources & Deficiency	CC
Bi 40	Plant Kingdom	CC
Bi 41	Animal Kingdom	CC
Bi 42	Nutreints	CC
Bi 43	Food Pyramids	CC
Bi 44	Potato Mosaic	CC
Bi 45	Bacterial Blight of Potato	CC
Bi 46	Environmental Pollution	CC
Bi 47	Vegatables & Fruits	CC
Bi 48	Oxygen Cycle	CC
Bi 49	Food Chain	CC
Bi 50	Food Web	CC
Bi 57	Municipal Water Treatment	CC
Bi 58	Enzymes : Classification & Kinetics	CC

Craft's Bio-visual Charts — AA = 435, BB = 585, CC = 630

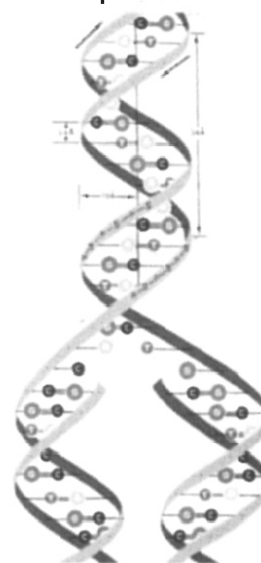
Bi 59	Phosphorous Cycle	CC	Bi 156	Transposons	CC
Bi 61	Geological Time Scale	CC	Bi 157	Gene Transfer I—Conjugation	CC
Bi 62	Endocrine Glands : Structure and Function	CC	Bi 158	Gene Transfer II—Transduction	CC
Bi 63	Xerosere	CC	Bi 159	Gene Transfer III—Transformation	CC
Bi 64	Hydrosere	CC	Bi 160	Flowers	CC
Bi 65	Biogas Plant	CC	Bi 161	Transport	CC
Bi 66	Chromatography	CC	Bi 162	DNA Replication Types	CC
Bi 67	Electrophoresis	CC	Bi 163	DNA Viral Replication	CC
Bi 68	Atmosphere-Layers	CC	Bi 164	Major Histocompatibility Class-I Molecule	CC
Bi 83	Protein Structure	CC	Bi 165	Major Histocompatibility Class-II Molecule	CC
Bi 84	Nucleotides & Biosynthesis	CC	Bi 166	Hereditary Alterations	CC
Bi 85	Terrestrial & Marine Ecosystems	CC	Bi 167	Electron Microscope	CC
Bi 128	Lac Operon	CC	Bi 168	Complement System	CC
Bi 129	Recombinant DNA and Cloning	CC	Bi 169	Kerb's Cycle	CC
Bi 130	Monoclonal antibodies and Blotting	CC	Bi 170	Drug Acting on Nervous System	CC
Bi 131	Crossing over	CC	Bi 230	Pedigree Analysis : Window Peak	CC
Bi 86	Prokaryotic & Eukaryotic Cells	CC	Bi 231	Pedigree Analysis : Rolling Tongue	CC
Bi 87	Human Liver & Pancreas	CC	Bi 304	Cell Cycle	CC
Bi 106	Xerophthalmia & Rickets	CC	Bi 73	Types of Immunity	CC
Bi 109	Pellagra & Goitre	CC	Bi 77	Antigens	CC
Bi 110	Ariboflavinosis & Scurvy	CC	Bi 78	Immunological Disorders (Aids)	CC
Bi 111	Marasmus & Kwashiorker	CC	Bi 79	Role of Hormone in Human being	CC
Bi 118	Balanced Diet	CC	C 9	DNA Structure and Replication	CC
Bi 119	Seasons	CC	C 10	Alpha Helical Structure of a Polypeptide	CC
Bi 121	Diabetes : Glucose Estimation	CC	C 11	Tertiary and Quarternary Structure of Protein	CC
Bi 122	Heart Attack : Cholestrol Estimation	CC			
Bi 123	Jaundice : Bilirubin Estimation	CC			
Bi 124	Sulphur cycle	CC			
Bi 125	Energy flow	CC			
Bi 132	Protoplast Fusion	CC			
Bi 133	Cloning & Vectors	CC			
Bi 134	Tryptophan Operon	CC			
Bi 135	Arabinose Operon	CC			
Bi 136	Total count of Blood	CC			
Bi 137	Immunoglobulin Structure	CC			
Bi 138	Antigen-antibody Interaction-I	CC			
Bi 139	Antigen-antibody Interaction-II	CC			
Bi 140	Polymerase Chain Reaction	CC			
Bi 141	Plasma Membrane	CC			
Bi 142	Manufacture of Alcohol from Molases	CC			
Bi 143	Transgenic Animals-I	CC			
Bi 144	Transgenic Animals-II	CC			
Bi 145	Hypersensitivity Type-I	CC			
Bi 146	Blotting techniques for Nucleic acid	CC			
Bi 147	Epistatic Interaction	CC			
Bi 148	Micropropagation of Plant	CC			
Bi 149	Life Cycle : Human Immunodeficiency Virus	CC			
Bi 150	First Aid-I	CC			
Bi 151	First Aid-II	CC			
Bi 152	First Aid-III	BB			
Bi 153	Blotting Techniques for Proteins	CC			
Bi 154	Laboratory Safety	CC			
Bi 155	Forms of DNA	CC			

DNA STRUCTURE

Space filling model



Replication



Old New New Old

Craft's Bio-visual Charts — AA = 435, BB = 585, CC = 630

C 40	Amino Acids : Structure and Classification	CC
Bi 88	X-ray Radiography	CC
Bi 89	Magnetic Resonance Imaging (MRI)	CC
Bi 90	Electro Cardio Graph (ECG)	CC
Bi 91	Electro Encephalography (EEG)	CC
Bi 92	Self Breast Examination	CC
Bi 93	Harmful Effects of Alcohol	CC
Bi 94	Harmful Effects of Tobacco Smoking	CC
Bi 104	Harmful Effects of Steroids	CC
Bi 96	Sexually Transmitted Infections	CC
Bi 97	Communicable Diseases	CC
Bi 98	Food Safety	CC
Bi 100	Handwashing Techniques	CC
Bi 101	Contraceptive Methods	CC
Bi 102	Brease Feeding Techniques	CC
Bi 103	Fetal Development	CC
Bi 105	BMI Chart (Body Mass Index)	CC
Bi 106	BP (Blood Pressure)	CC
Bi 107	Dialysis	CC
Bi 108	Paralytic Features of Anterior Poliomyelitis	CC
Bi 109	Cystic Fibrosis	CC

Protozoa

Z 48	Amoeba	CC
Z 50	Euglena	CC
Z 51	Trypanosoma	CC
Z 53	Plasmodium : Life Cycle	CC
Z 54	Paramoecium : Structure	CC
Z 55	Paramoecium : Reproduction	CC
Z 138	Entamoeba Histolytica	CC
Bi 38	Pathogenic protozoa	CC
Z 49	Polystomella	CC
Z 52	Monocystis	CC
Z 56	Vorticella	CC
Z 132	Vorticella Conjugation	CC
Z 207	Leishmania Donovanii	CC
Bi 38	Pathogenic Protozoa	CC

Porifera

Z 57	Sycon : Structure	CC
Z 58	Sycon : Development	CC
Z 59	Canal System in Sponges	CC
Z 221	Organisation of Sponge	CC

Coelenterata

Z 60	Hydra	CC
Z 61	Obelia	CC
Z 62	Aurelia	CC
Z 238	Hydra Testis and Ovary	CC
Z 247	Metridium (Sea Anemon)	CC

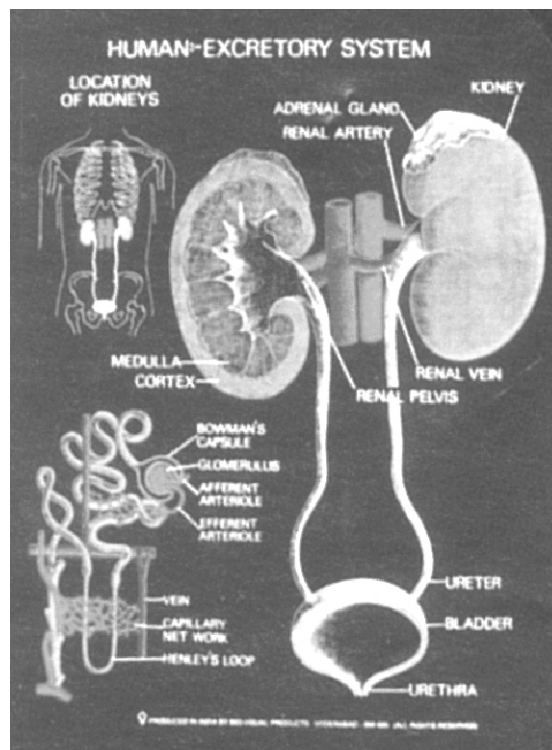
Z 271	Coral and Coral Reef	CC
-------	----------------------	----

Helminthes

Z 64	Fasciola hepatica : Structure	CC
Z 65	Fasciola hepatica : Reproduction	CC
Z 66	Taenia Solium	CC
Z 103	Ascaris lumbricoides	CC
Z 109	Ancylostoma	CC
Z 102	Echinococcus	CC
Z 195	Life Cycle : Ancylostoma	CC
Z 200	Trichinella Spirilis	CC
Z 215	Tapeworm	CC
Z 216	Tapeworm : Mature Proglottid	CC
Z 229	Life cycle of Wucheria Brancrofti	CC
Z 239	Ascaris Reproduction	CC

Annelida

Z 41	Earthworm : External Features	CC
Z 42	Earthworm : Anatomy	CC
Z 2	Earthworm : Transverse Section	CC
Z 43	Earthworm : Circulatory System	CC
Z 44	Earthworm : Excretory System	CC
Z 45	Earthworm : Reproductive System	CC
Z 46	Earthworm : Nervous System	CC
Z 178	Earthworm : Digestive System	CC



Craft's Bio-visual Charts — AA = 435, BB = 585, CC = 630

Z 47	Leech : Excretory & Reproductive Organs	CC
Z 104	Leech : External Features	CC
Z 162	Leech : Digestive System	CC
Z 3	Leech T.S.	CC
Z 194	Neresis (Sandworm)	CC
Z 198	Nereis Reproduction	CC
Z 201	Nereis Digestive System	CC
Z 11	Earthworm : Embryo Development	CC
Z 241	Leech : Sense Organs	CC
Z 242	Leech : Stages of Cocoon Formation	CC
Z 245	Millipede (Julus)	CC
Z 246	Centipede (Scolopendra)	CC
Z 248	Planaria : External Features and Anatomy	CC
Z 249	Planaria : Digestive and Excretory System	CC
Z 250	Planaria : Nervous and Reproductive System	CC

Arthropoda

Z 92	Cockroach : External Features	CC
Z 93	Cockroach : Head & Mouth Parts	CC
Z 94	Cockroach : Digestive System	CC
Z 95	Cockroach : Respiratory System	CC
Z 96	Cockroach : Circulatory and Nervous Systems	CC
Z 97	Cockroach : Reproductive System	CC
Z 163	Cockroach : Excretory System	CC
Z 98	Mouth Parts of Mosquito, Housefly and Butterfly	CC
Z 105	Prawn : Appendages	CC
Z 139	Prawn : Digestive System	CC
Z 145	Prawn : Respiratory & Circulatory Systems	CC
Z 156	Life History of House fly	CC
Z 157	Life History of Butter fly	CC
Z 158	Life History of Mosquito	CC
Z 159	Life History of Silk Moth	CC
Z 176	Harmful & Useful Insects	CC
Z 180	Scorpion : Book Lungs	CC
Z 181	Honey Bee : Life Cycle	CC
Z 195	Lac Insect : Life Cycle	CC
Z 197	Peripatus	CC
Z 206	Prawn Nervous System	CC
Z 208	Prawn Excretory System	CC
Z 213	Prawn Reproductive System	CC
Z 209	Scorpion External Features	CC
Z 210	Scorpion Nervous System	CC
Z 211	Scorpion Digestive System	CC
Z 214	Scorpion Reproductive System	CC

Z 256	Grass hopper : Digestive System and Nervous system	CC
Z 256	Grass Hopper : Circulatory and Reproductive system	CC
Z 233	Chamaeleon	CC
Z 244	Spider (Aranea)	CC
Z 263	Crustacea Larvae	CC

Entomology

Bi 105	Lesser Grain Borer Angoumois Grain Moth	CC
BI 107	Rice Moth & Pulse Beetle	CC
Bi 108	Insects of Food Grains	CC

Mollusca

Z 112	Unio : Structure	CC
Z 113	Unio : respiratory System	CC
Z 114	Pila : Shell & Mantle Cavity	CC
Z 147	Nervous System : Prawn Pila & Unio	CC
Z 179	Unio : Digestive & Circulatory System	CC
Z 180	Torsion in Gastropoda	CC
Z 219	Pila : Digestive System	CC
Z 220	Pila : Sense Organs	CC
Z 222	Pila : Excretory & Reprd. System	BB
Z 261	Octopus : Structure and Anatomy	CC
Z 262	Octopus : Brain and Nervous System	CC

Echinodermata

Z 134	Asterias : External Features	CC
Z 135	Asterias : Water Vascular System	CC
Z 137	Asterias : Development	CC

Protochordata

Z 146	Herdmania : External Characters	CC
Z 140	Herdmania : Blood Vascular System	CC
Z 130	Herdmania : Development and Retrogressive Metamorphosis	CC
Z 106	Amphioxus : External Features	CC
Z 107	Amphioxus : Transverse Sections	CC
Z 108	Amphioxus : Digestive System	CC
Z 119	Amphioxus : Circulatory and Excretory Systems	CC
Z 120	Amphioxus : Development-Early	CC
Z 121	Amphioxus : Development-Later	CC
Z 190	Balanoglossus	CC

Scoliodon

Z 69	Scoliodon : Digestive System	DD
Z 67	Scoliodon Skull	BB
Z 124	Scoliodon : Heart	CC
Z 70	Scoliodon : Afferent & Efferent Vessels	CC

Craft's Bio-visual Charts — AA = 435, BB = 585, CC = 630

Z 71	Scoliodon : Venous System	CC
Z 72	Scoliodon : Urinogenital System	CC
Z 73	Scoliodon : Brain	CC
Z 74	Scoliodon : Cranial Nerves	CC
Z 225	Cartigious Fishes	CC
Z 226	Lung Fishes (Depnoi) and Latimeria Fishes	CC
Z 227	Teleost Fishes	CC
Z 228	Ratitae Birds	CC
Z 255	Fish Culture and Rearing	CC
Z 258	Labeo Rohita : Skull System	CC
Z 259	Labeo Rohita : External Features	CC
Z 270	Fish Respiratory System	CC

Frog : Histology

Z 25	Frog : Skin	CC
Z 26	Frog : Stomach and Intestine	CC
Z 28	Frog : Lung & Kidney	CC
Z 29	Frog : Testis and Ovary	CC
Z 30	Frog : Spinal Cord	CC

Frog : Anatomy and Physiology

Z 19	Frog : Skull	CC
Z 20	Frog : Vertebral column	CC
Z 4	Frog : Appendicular skeleton	CC
Z 21	Frog : External Features	CC
Z 22	Frog : Anatomy	CC
Z 31	Frog : Digestive System	CC
Z 32	Frog : Respiratory System	CC
Z 33	Frog : Heart	CC
Z 34	Frog : Venous System	CC
Z 35	Frog : Arterial System	CC
Z 36	Frog : Urinogenital System	CC
Z 37	Frog : Brain	CC
Z 39	Frog : Spinal and Sympathetic Nerves	CC
Z 99	Frog : Development-Early	CC
Z 100	Frog : Development & metamorphosis	CC

Dissections

Z 75	Lizard : Venous System	CC
Z 76	Lizard : Arterial System	CC
Z 77	Pigeon : Venous System	CC
Z 78	Pigeon : Arterial system	CC
Z 79	Rat : Venous System	CC
Z 80	Rat : Aterial System	CC

Osteology

Z 110	Varanus : Appendicular Skeleton	CC
Z 128	Varanus : Vertebrae	CC
Z 17	Rabbit : Skull	CC
Z 18	Rabbit : Vertebrae	CC

Z 5	Rabbit : Appendicular Skeleton	CC
Z 111	Fowl : Appendicular Skeleton	CC
Z 129	Fowl : Vertebrae	CC
Z 264	Articulated skeleton of Rabbit	CC

Embryology

Z 130	Herdmania : Development and Retrogressive Metamorphosis	CC
Z 120	Amphioxus : Development-Early	CC
Z 121	Amphioxus : Development-Later	CC
Z 99	Frog : Development-Early	CC
Z 100	Frog : Development & Metamorphosis	CC
Z 81	Chick : Gastrulation	CC
Z 82	Chick : 20-30 hrs, Embryo	CC
Z 83	Chick : 48-56 hrs, Embryo	CC
Z 84	Chick : 72 hrs, Embryo	CC
Z 85	Chick : 96 hrs, Embryo	CC
Z 170	Placenta Types : Histological Structure	CC
Z 171	Placenta Types : Distribution of Villi	CC
Z 177	Types of Eggs & Cleavages	CC

Cytology

Z 1	Ultra Structure of a typical Animal Cell	CC
Z 12	Mitosis in Animals	CC
Z 13	Structure of Chromosomes during Mitosis	CC
Z 14	Meiosis in Animals (1st Division)	CC
Z 15	Meiosis in Animals (2nd Division)	CC
Z 16	Structure of Chromosome during Meiosis	CC

Mammalian Histology

Z 86	Rabbit : Connective tissue	CC
Z 87	Rabbit : Stomach and Intestine	CC
Z 88	Rabbit : Liver and Pancreas	CC
Z 89	Rabbit : Lung, Spleen and Spinal Cord	CC
Z 90	Rabbit : Kidney	CC
Z 91	Rabbit : Testis and Ovary	CC
Z 118	Hair Structure and Development	CC
Z 185	Rabbit cranial and spinal nerves	CC
Z 186	Rabbit Respiratory system	CC
Z 187	Rabbit and Hare-External features	CC
Z 188	Rabbit Embryo development	CC
Z 229	Rabbit : Types of Joints	CC
Z 230	Rabbit : Male Reproductive System	CC
Z 231	Rabbit : Female Reproductive System	CC

Comparative Anatomy

Z 9	Vertebrates : Pectoral Girdles	CC
Z 8	Vertebrates : Fore Limb Bones	CC
Z 7	Vertebrates : Pelvic Girdles	CC
Z 6	Vertebrates : Hind Limb Bones	CC

Craft's Bio-visual Charts — AA = 435, BB = 585, CC = 630

Z 122	Vertebrates : Evolution of Aortic Arches	CC
Z 123	Vertebrates : Heart	CC
Z 125	Vertebrates : Brain	CC
Z 141	Vertebrates : Male Urinogenital System	CC
Z 142	Vertebrates : Female Urinogenital System	CC
Z 160	Snakes : Poisonous	CC
Z 172	Snakes : Non Poisonous	CC
Z 235	Vertebrate : Arterial System	CC
Z 236	Vertebrate : Skull System	CC
Z 240	Comparative Account of Jaw Suspension	CC

General Anatomy

Z 144	Lizard & Pigeon : Urinogenital System	CC
Z 115	Pigeon heart	CC
Z 126	Pigeon brain	CC
Z 154	Pigeon : Digestive System	CC
Z 155	Pigeon : Respiratory System	CC
Z 175	Pigeon : Flight Muscles	CC
Z 117	Feather : Structure, Types & Dev	CC
Z 152	Rat : Digestive System	CC
Z 153	Rat : Urinogenital System	CC
Z 148	Tooth : Structure & Development	CC
Z 164	Fish : External Features	CC
Z 165	Bird : External Features	CC
Z 182	Birds & Their Nests	CC
Z 174	Larvae : Invertebrata	CC
Z 62	Endocrine Glands : Structure & Function	DD
Bi 87	Human Liver & Pancreas	DD
Z 183	Cow digestive system	CC
Z 202	Calotes	CC
Z 203	Calotes Heart and Arterial system	CC
Z 204	Calotes Venous system	CC
Z 205	Calotes Urinogenital	CC
Z 217	Calotes : Skull	CC
Z 218	Calotes : Digestive & Respiratory System	CC
Z 191	Pigeon Ext. characters	CC
Z 223	Homologous Organs : Animals	CC
Z 224	Analogous Organs : Animals	CC
Z 268	Types of Reptiles	CC
Z 269	Types of Birds	CC
Z 273	Identification of Poisonous and Non-Poisonous Snakes	CC

Rabbit Anatomy & Physiology

Z 136	Rabbit : Anatomy	CC
Z 149	Rabbit : Digestive System	CC
Z 116	Rabbit : Heart	CC

Z 151	Rabbit : Venous System	CC
Z 150	Rabbit : Arterial System	CC
Z 143	Rabbit : Urinogenital System	CC
Z 133	Rabbit : Brain	CC
Z 184	Rabbit : Nervous System	CC
Z 264	Articulated Skeleton of Rabbit	CC

Evolution

Z 10	Evolution of Horse	CC
Z 199	Zoogeographical distribution of animals This is a double sized chart (1.25 mx2m)	2CC
Z 166	Archaeopteryx	CC
Z 167	Morphological Evidences	CC
Z 168	Lamarckism	CC
Z 169	Evolution of Man	CC
Bi 41	Animal Kingdom	CC
Z 173	Embryological Evidences	CC

Human Anatomy (Size 90 × 60 cms)

HA 1	Human Skeleton	AA
HA 2	Human Skeleton joints and limbs	AA
HA 3	Human Heart	AA
HA 4	Human Arterial System	AA
HA 5	Human Venous System	AA
HA 6	Human Digestive System	AA
HA 7	Human Respiratory System	AA
HA 8	Human Excretory System	AA
HA 9	Human Brain	AA
HA 10	Human Spinal Cord	AA
HA 11	Human Skin	AA
HA 12	Human Ear	AA
HA 13	Human Eye	AA
HA 14	Human Endocrine glands	AA
HA 15	Human Reproductive System	AA
HA 16	Human Nervous System	AA
HA 17	Human Muscular System	AA
HA 18	Human Nose	AA
HA 19	Human Tongue	AA
HA 20	Human Muscles	AA
HA 21	Human Cartilage & Bone	AA
HA 22	Human Blood	AA
HA 23	Human Blood Groups	AA
HA 24	Human Embryo Development I	AA
HA 25	Human Embryo Development II	AA
HA 26	Human Lymphatic System	AA
HA 27	Human Teeth	AA
HA 28	Human Menstrual cycle	AA
HA 29	Human Immunity system	AA
HA 30	Human body	AA
HA 31	Human Ovum	AA

Craft's Bio-visual Charts — AA = 435, BB = 585, CC = 630

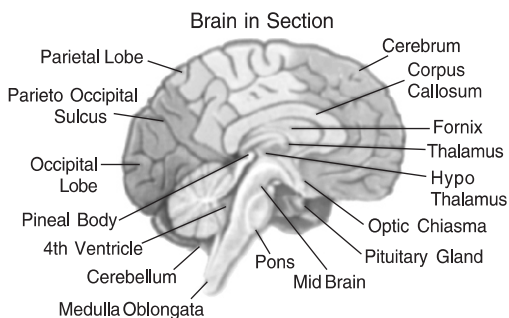
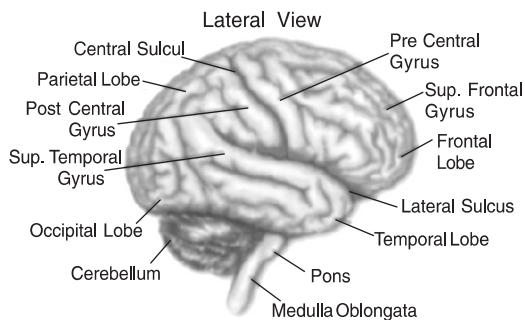
HA 32	Human Vascular system & Viscera	AA
HA 33	Human Blood-I (EBC)	AA
HA 34	Human Blood-II (WBC)	AA
HA 35	Human Sperm	AA
HA 36	Human Sense Organs	AA
HA 37	Human Neuron	AA
HA 38	Human Nephron	AA
HA 39	Endocrine glands : Function	AA
HA 40	Human Liver & Pancreas	AA
HA 41	Circulatory System	AA
HA 42	Human Anatomy	AA
HA 43	Human Reproductive System—Male	AA
HA 44	Human Stomach	AA
HA 45	Human Reproductive System—Female	AA
HA 46	Human Vestigial Organs	AA
BI 120	Human Circulatory system	CC
BI 121	Diabetes : Glucose estimation	CC
BI 122	Heart attack : Cholesterol estimation	CC
BI 123	Jaundice Bilirubin estimation	CC
HA 47	Human : Ultra Structure of Human Cell	AA
HA 48	Human : Large Intestine	AA
HA 49	Human : Skull System	AA
HA 50	Human : Mammary Glands	AA
HA 51	Human Karyogram	AA
HA 52	Human Small Intestine	AA

HA 53	Human Pituitary Gland	AA
HA 54	Human Thyroid Gland	AA
HA 55	Human Lymph Node	AA
HA 56	Human Adrenal Glad	AA
HA 57	Human Pelvis Anatomy	AA
HA 58	Human Wrist Anatomy	AA
HA 51	Human Liver	AA
HA 60	Human Ribcage	AA

Biochemistry, MicroBiology & Biotechnology Charts

Bi 9	Cell Membrane & cel wall	CC
Bi 10	Endoplasmic Reticulum	CC
Bi 11	Mitochondrion	CC
Bi 12	Golgi Complex	CC
Bi 13	Chloroplast	CC
Bi 14	Nucleus	CC
Bi 15	Chromosomes	CC
Bi 18	DNA 8 Loops (7'×3')	CC
Bi 19	DNA Structure (Compounds)	CC
Bi 26	RNA Types : Transcription & Translation	CC
Bi 27	RNA Structure	CC
Bi 28	Protein Synthesis	CC
Bi 29	Urea Cycle	CC
Bi 30	Vitamins : Sources & Deficiency	CC
Bi 55	Osmosis, Plasmolysis & Diffusion	CC
Bi 56	Gluconeogenesis & HMP pathway	CC
Bi 58	Enzymes : Classification & Kinetics	CC
Bi 60	Genetic Code	CC
Bi 66	Chromatography	CC
Bi 67	Electrophoresis	CC
Bi 80	Ribosomes & Lysosomes	CC
Bi 81	Active & Passive Transport	CC
Bi 82	Fatty Acid Oxidaton & Regulation	CC
Bi 83	Protein Structure	CC
Bi 84	Nucleotides & Biosynthesis	CC
Bi 86	Prokaryotic & Eukaryotic Cells	CC
Bi 111	Marasmus & Kwashiorkor	CC
Bi 118	Balanced Diet	CC
Bi 121	Diabetes : Glucose Estimation	CC
Bi 122	Heart attack : Cholesterol Estimation	CC
Bi 123	Jaundice : Bilirubin Estimation	CC
Bi 128	Lac Operon	CC
Bi 129	Recombinant DNA & Cloning	CC
Bi 130	Monoclonal Antibodies & Blotting	CC
Bi 134	Tryptophan operon	CC
Bi 135	Arabinose operon	CC
Bi 136	Total count of blood	CC
Bi 137	Immunoglobulin structure	CC
Bi 138	Antigen-antibody interaction-I	CC

HUMAN BRAIN



Craft's Bio-visual Charts — AA = 435, BB = 585, CC = 630

Bi 139	Antigen-antibody interaction-II	CC
Bi 140	Polymerase chain reaction	CC
Bi 141	Plasma membrane	CC
Bi 142	Manufacture of alcohol from molasses	CC
Bi 145	Hypersensitivity type-I	CC
Bi 146	Blotting techniques for nucleic acid	CC
Bi 149	Life Cycle : Human Immuno-deficiency virus	CC
Bi 152	Bacteria	CC
Bi 153	Blotting Technique for Protein	CC
Bi 154	Laboratory Safety	CC
Bi 155	Forms of DNA	CC
Bi 156	Transposons	CC
Bi 157	Gene Transfer I - Conjugation	CC
Bi 158	Gene Transfer II - Conjugation	CC
Bi 159	Gene Transfer III - Conjugation	CC
Bi 162	DNA Replication types	CC
Bi 163	DNA Viral Replication	CC
Bi 164	Major Histocompatibility Class I Molecule	CC
Bi 165	Major Histocompatibility Class II Molecule	CC
Bi 167	Electron Microscope	CC
Bi 168	Complement System	CC
Bi 169	Kerb's Cycle	CC
B 153	Virusus	CC
B 176	C4 & CAM Cycles	CC
B 196	Plant Tissue Culture	CC
B 194	Plant Respiration	CC
B 199	Plant Hormones	CC
B 231	Mucor	CC
B 232	Mucor : Life cycle	CC
C 9	DNA Structure & Replication	CC
C 10	Alpha helical Structure of a Polypeptide	CC
C 11	Tertiary & Quarternary Structure of Protein	CC
C 40	Amino Acids : Structure & Classification	CC
Bi 32	Tuberculosis	CC
Bi 33	Typhoid	CC
Bi 34	Diphtheria	CC
Bi 35	Diarrhoea	CC
Bi 36	Filariasis	CC
Bi 37	Leprosy	CC
Bi 38	Pathogenic Protozoa	CC
Bi 39	E. Coli	CC
B 49	Saprolegnia	CC
B 50	Rhizopus	CC
B 51	Albugo	CC
B 52	Phytophthora	CC
B 53	Saccharomyces	CC

B 55	Penicillium	CC
Bi 54	Aids	CC
B 58	Puccinia	CC
B 79	Myxophyceae	CC
B 80	Chlamydomonas	CC
Bi 86	Prokaryotic & Eyukaryotic cells	CC
Bi 106	Xerophthalmia and Rickets	CC
Bi 109	Pellagra and Goitre	CC
Bi 110	Ariboflavinosis and Scurvy	CC
Bi 111	Marasmus and Kwashiorkor	CC
B 150	Cercospora	CC
B 151	Colletotrichum	CC
B 153	Viruses	CC
B 189	Helminthosporium	CC
B 213	Plant Diseases	CC
B 226	Citrus Canker & Rice Blast	CC
Bi 73	Types of Immunity	CC
Bi 77	Antigens	CC
Bi 78	Immunological Disorders (Aids)	CC
Bi 79	Role of Hormone in Human Being	CC

Agricultural Science Charts

Bi 44	Potato Mosaic	CC
Bi 45	Bacterial Blight of Potato	CC
Bi 105	Life Cycle of Lesser grain borer and Angoumois Grain moth	CC
Bi 107	Rice moth and Pulse Beetle	CC
Bi 108	Insects found in Food grain	CC
Bi 147	Epistatic Interaction	CC
Bi 148	Micropropagation of plant	CC
Bi 160	Flowers	CC
Bi 167	Electron Microscope	CC
B 49	Saprolegnia	CC
B 54	Aspergillus	CC
B 57	Erysiphe	CC
B 60	Agaricus	CC
B 148	Ustilago	CC
B 149	Polyporus	CC
B 154	Lichens	CC
B 189	Helminthosporium	CC
B 190	Medicinal Plant I	CC
B 191	Medicinal Plant II	CC
B 214	Medicinal Plant III	CC
B 218	Medicinal Plant IV	CC
B 216	Sorghum Diseases	CC
B 230	Secondary Growth in Dicotyledonous Root	CC
B 235	Oscillatoria	CC
B 236	Alternaria	CC
B 243	Plants of Economic Imporance	CC
B 244	Pollination & Fertilization	CC