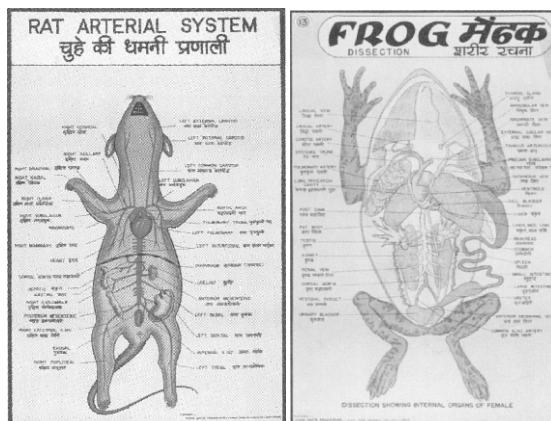


Biocraft's General Zoological Laminated Charts

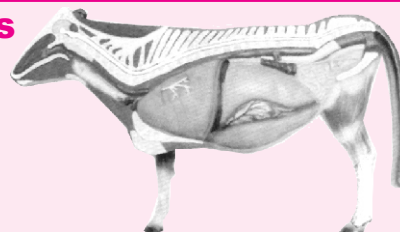
Multicoloured, fully labelled Size 50 × 75 cm or 55 × 90 Rs. **145.00** Each

- | | | | |
|--------|---|--------|--|
| GBL-1 | Life History of Frog | GBL-41 | Cockroach : Morphology & Reproduction |
| GBL-2 | Life History of Mosquito
(Anopheles and Culex) | GBL-42 | Cockroach : Respiratory, Blood,
Circulation and Nervous |
| GBL-3 | Life History of Butterfly | GBL-43 | Frog Appendicular Skeleton |
| GBL-4 | Life History of Housefly | GBL-44 | Frog Skull |
| GBL-5 | Life History of Silkworm | GBL-45 | Frog Brain |
| GBL-6 | Life History of Earthworm | GBL-46 | Frog Circulatory System |
| GBL-7 | Life History of Cockroach | GBL-47 | Frog Reproductive System |
| GBL-8 | Life History of Tapeworm | GBL-48 | Frog Respiratory System |
| GBL-9 | Life History of Malaria Parasite | GBL-49 | Frog Excretory System |
| GBL-10 | Life History of Amoeba | GBL-50 | Frog Skeleton |
| GBL-11 | Harmful Insects | GBL-51 | Frog General Anatomy (Dissection) |
| GBL-12 | Beneficial Insects | GBL-52 | Frog Sense Organs |
| GBL-13 | Habits of Birds (Beaks and feet) | GBL-53 | Frog Body Regions |
| GBL-14 | Life History of Liverfluke | GBL-54 | Frog Heart |
| GBL-15 | Snake & Snake bites | GBL-55 | Frog Nervous System |
| GBL-16 | Mitosis in Animals | GBL-56 | Frog Cells and Tissues |
| GBL-17 | Meiosis in Animals | GBL-57 | Frog Histology |
| GBL-18 | Carbon Cycle in Nature | GBL-58 | Frog Arterial System |
| GBL-19 | Nitrogen Cycle in Nature | GBL-59 | Frog Central Nervous System |
| GBL-20 | Ultrastructure of Plant and Animal Cell | GBL-60 | Frog Digestive System |
| GBL-21 | Hook Worm | GBL-61 | Frog External features (Buccal Cavity) |
| GBL-22 | Paramecium | GBL-62 | Rat Anatomy |
| GBL-23 | Fish Anatomy | GBL-63 | Rat Digestive System |
| GBL-24 | Rabbit Dissection | GBL-64 | Rat External Character |
| GBL-25 | Hydra | GBL-65 | Rat Arterial System |
| GBL-26 | Animal Cell (Electron Microscope) | GBL-66 | Rat Venous System |
| GBL-27 | Animal Kingdom (Evolution Tree) | GBL-67 | Rat Urinogenital System (Male and Female) |
| GBL-28 | Gametogenesis in Animals | | |
| GBL-29 | Fertilization in Animals | | |
| GBL-30 | DNA Chart | | |
| GBL-31 | RNA Chart | | |
| GBL-32 | Food Chain | | |
| GBL-33 | Various Animal Tissues | | |
| GBL-34 | Comparative Study of Chromosomes in
Man, Frog, Maize, Onion, Tobacco | | |
| GBL-35 | Virus Chart | | |
| GBL-36 | Human Blood Cells | | |
| GBL-37 | Earthworm : Digestion, Excretory, Skin | | |
| GBL-38 | Earthworm : Ext. Morphology,
Reproduction | | |
| GBL-39 | Earthworm : Respiratory, Blood,
Circulation, Nervous System | | |
| GBL-40 | Cockroach : Digestion, Excretory, Skin
and Muscles | | |



Biocraft's Imported Veterinary Models

- | | | |
|-------|----------------------------------|-------|
| IVM-1 | Cow Dissected on Stand | 6,825 |
| IVM-2 | Dog Partially Dissected | 3,700 |
| IVM-3 | Pig Anatomy | 6,825 |
| IVM-4 | Cow Anatomy Model (Hanging Type) | 4,150 |
| IVM-5 | Pig Anatomy Model (Hanging Type) | 4,150 |
| IVM-6 | Dog Anatomy Model (Hanging Type) | 4,150 |



Biocraft's O.H. Projector Transparencies—Multicoloured

Price — Rs. 90.00 each Size — 12" × 10"

- Zoology set of 75 O.H.P. Transparencies**—Including Protozoa, Ascaris, Earthworm, Reptile, Birds, Animal life histories. Rabbit, Frog, RNS, DNA, Evolution etc. @ 6000/- per set of 75 nos.
- Animal Cell & Tissues**—Bone, Cartilage, Muscles, Nerves etc. set of 15 Transparencies @ 1200/- per set.
- Chick Embryology Transparencies**—set of 20 Transparencies @ 1600/- per set
- Frog Embryology**—set of 15 Transparencies @ 1200/- per set 12.
- Mitosis Cell Division**—set of 9 Transparencies @ 720/- per set 29.
- Meiosis Cell Division**—set of 12 Transparencies @ 960/- per set 9.
- Human Physiology set**—set of 50 transparencies on Different Human systems, organs, joints etc. @ 4000/- set of 50.
- Human sense Organs and their Working Details**—set of 20 transparencies @ 1600/- per set of 20.

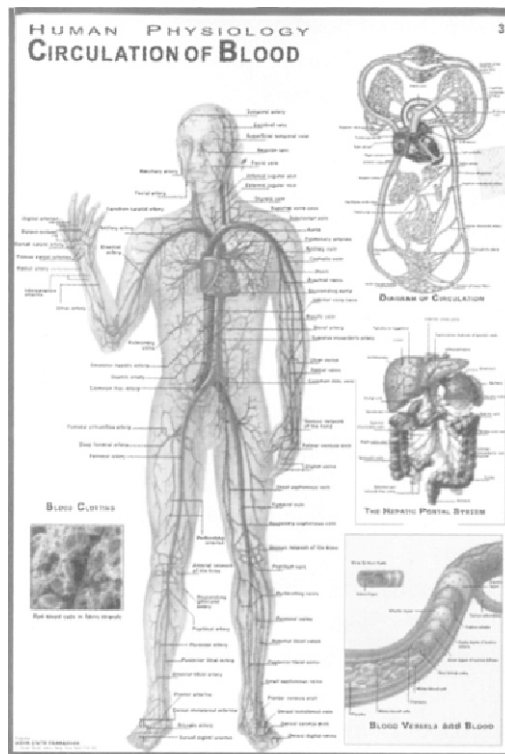
Biocraft's Delux Coloured Laminated Charts

Lamination from both sides gives a glossy appearances and enhance the looks of a chart and prevents any fold or wrinkle. Lamination seals and encapsulates the chart between clear flexible sheets so that no water, dust or grease, can effect it. These charts are supplied with plastic rollers affixed at the top and the bottom.

Biocraft's Laminated Charts Size— 75 × 100 cm Rs.204.00 Each

Human Physiology Charts

- BL-1 Human Skeleton System
- BL-2 Human Muscular System
- BL-3 Human Circulation of Blood
- BL-4 Human Brain & Nervous System
- BL-5 Human Digestive System
- BL-6 Human Eye
- BL-7 Human Ear
- BL-8 Human Kidney, Skin & Excretory Organs
- BL-9 Human Respiratory System
- BL-10 Human Heart
- BL-11 Human Endocrine System
- BL-12 Human Genito Urinary Organs (Male)
- BL-13 Human Female Reproductive System
- BL-14 Human Embryology (Early stage)
- BL-15 Human Lymphatic System
- BL-16 Human Teeth and Dental Care
- BL-17 Human Brain
- BL-18 Human Skull
- BL-19 Human Pregnancy
- BL-20 Human Ear, Nose, Throat
- BL-21 Human Liver, Gall Bladder & Pancreas
- BL-22 Menstrual Cycle
- BL-23 Sense organs and Reflex Action
- BL-24 Human Nephron
- BL-25 Human Mammary Glands
- BL-26 Human Skin (Integumentary System)



Biocraft's Laminated Charts

Size 50 × 75 cm or 55 × 90 Rs. 145.00 Each

Common Diseases and Prevention

- BLS-1 Malaria—Symptoms and Prevention
- BLS-2 Leprosy—Symptoms and Prevention
- BLS-3 Influenza—Symptoms and Prevention
- BLS-4 Jaundice—Symptoms and Prevention
- BLS-5 Cancer—Symptoms and Prevention
- BLS-6 Virus Diseases—Symptoms and Prevention
- BLS-7 Aids—Symptoms and Prevention
- BLS-8 Small Pox—Symptoms and Prevention
- BLS-9 Plague—Symptoms and Prevention
- BLS-10 Typhoid—Symptoms and Prevention
- BLS-11 Cholera—Symptoms and Prevention
- BLS-12 Tuberculosis—Symptoms and Prevention
- BLS-13 Dysentery—Symptoms and Prevention
- BLS-14 Protein Energy Malnutrition
- BLS-15 Immunization Chart for the New Born
- BLS-16 Heart Attack
- BLS-17 Diabetes
- BLS-18 Asthama
- BLS-19 Arthritis
- BLS-20 Chicken Pox
- BLS-21 Hepatitis
- BLS-22 Thyroid
- BLS-23 Blood Pressure



First Aid Charts

- BLS-28 Bandaging—First Aid Chart
- BLS-29 Roller Bandages—First Aid Chart
- BLS-30 Fractures—First Aid Chart
- BLS-31 Transport of the injured—First Aid Chart
- BLS-32 Unconsciousness—First Aid Chart
- BLS-33 Haemorrhage (Control of Bleeding)—First Aid Chart
- BLS-34 Electric Shock Treatment—First Aid Chart
- BLS-35 Emergency Resuscitation—First Aid Chart

Family Planning Chart

- BLS-24 Unplanned Family
- BLS-25 Planned Family
- BLS-26 Family Planning Methods
- BLS-27 Marriage and Child Planning

Biocraft's Yogasans Charts

Size 50 × 70 cm — English-Hindi Combined
 Laminated Price Rs. 1400.00 per set

1. Surya Namaskar
2. Padmasana, Siddhasana, Yogmudra, Ardha, Matsyendrasana, Paschimottanasanas, Gomukhasana
3. Pavanmuktasana, Matsyasana, Sarvangasana, Halasana, Mandukasana, Shashankasana
4. Paanmuktasana, Matsyasana, Sarvangasana, Halasana
5. Shalbasana, Bhujangasana, Dhanurasana
6. Sheershasana, Mayurasana, Shavasana, Konasana
7. Trikonasana, Tadasana, Urdhva Hastasana, Pudhastasana, chakrasana
8. Purification of the body—Neti, Nauli, Dhauti, Tratak
9. Pranayam I—Anulom-Vilom, Kapal Bhati, Brahmari, Nadi Shuddhi, Agnisara
10. Pranayam II—The Three Bandhas, Ujjayai, Surya Bheda, Bhastrika, Sitali

