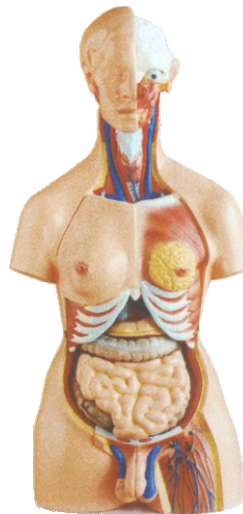
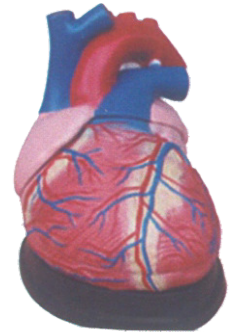


## Biocraft's Export Quality Medical Grade Human Models

		Rs.
BEM-1	Human Unisex Torso 23 parts Removable	4,800
BEM-2	Torso Male with Removable 23 parts	5,200
BEM-3	Human Torso Female with Removeable 23 parts	5,200
BEM-4	Human Eight Parts Brain with Artries	1,100
BEM-5	Human Heart Life Size	850
BEM-6	Human Jumbo Heart	1,650
BEM-7	Human Stomach Model	750
BEM-8	Human Digestive System	2,200
BEM-9	Human Liver, Paeceas and Duodenum	1,150
BEM-10	Human Magnified Pulmonary Alveoli	1,440
BEM-11	Human Magnified Larynx	1,050
BEM-12	Human Kidney	450
BEM-13	Human Giant Size Ear Model	1,600
BEM-14	Human Tooth Hygiene Set	1,080
BEM-15	Human Nasal Cavity	1,620
BEM-16	Human Skin Model	1,100
BEM-17	Human Magnified Uterus Model	750
BEM-18	Human Appendix and Caecum	1,440
BEM-19	Human Neuron Model	2,150
BEM-20	Human Multi Functional Patient Care (Nursing Doll)	16,800
BEM-21	Human Female Pelvis with Baby	2,700
BEM-22	Human Female Pelvis	2,200
BEM-23	Human Male Pelvis	2,200
BEM-24	Human Urogential System	1,050
BEM-25	Human Female Urogential System	1,050
BEM-26	Human Development Process for Fetus	3,700
BEM-27	Human Child Birth Model	10,800
BEM-28	Human Fetus with Viscus Placenta	3,600
BEM-29	Human Fertilization Early Embryology	4,500
BEM-30	Human Lungs Heart and Larynx	1,700
BEM-31	Human Spleen and Pancrease	900
BEM-32	Human Adult Male Pelvis (Bone)	990
BEM-33	Human Adult Female Pelvis (Bone)	990
BEM-34	Human Femur Bone	1,200
BEM-35	Human Birth Demonstration Model	1,200
BEM-36	Human Nervous System on Board	5,400
BEM-37	Human Sympathetic Nervous System on Board	5,400
BEM-38	Human Spinal Cord with Spinal Canal	5,400
BEM-39	Human Muscular Skeleton Full Size	9,800
BEM-40	Human Skeleton with Organ 5.5 Feet	9,800
BEM-41	Human Blood Circulatory System	3,000
BEM-42	Human Ear Large-5 parts	1,600
BEM-43	Human Skin	1,250
BEM-44	Human Muscular Body Showing All Muscles and Artery Full Size	9,800



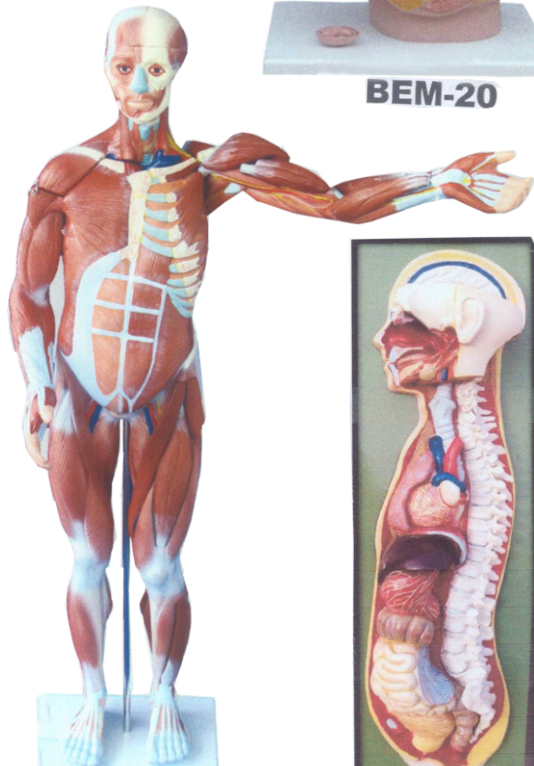
**BEM-2**



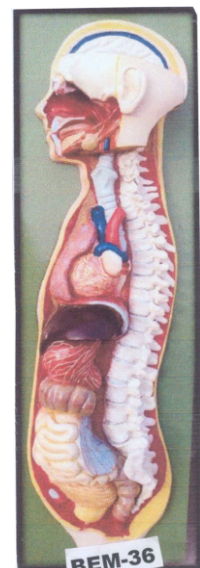
**Jumbo Heart**



**BEM-20**



**BEM-43**



**BEM-36**