

Biocraft's Permanent Micro-prepared Slides

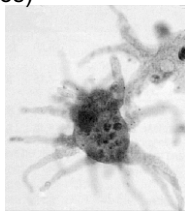
Differentially Double or Triple stained showing all the minor details. The slides are manufactured by technical staff in our Microtech Laboratory equipped with latest type of Microtomes & Tissue Processors. The Micro-slides are supplied on approval basis. Cost of the slide-boxes will be charged extra.

CODE VALUE Rs. A = 24, B = 28, C = 32, D = 40, E = 64

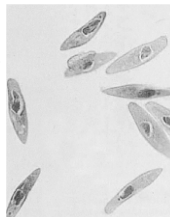
BZ

Protozoa

- 1 Amoeba Proteus (imported) E
- 2 Amoeba Giant (Chaos Chaos) E
- 3 Amoeba Pelo Myxa E
- 4 Amoeba Encystment W.M. E
- 5 Amoeba Binary Fission D
- 6 Arcella W.M. D
- 7 Alphidium W.M. D
- 8 Balantidium Coli W.M. D
- 9 Colpidium W.M. D
- 10 Ceratium E
- 11 Didinium W.M. D
- 12 Eimeria Coccidium in Tissue D
- 13 Epistylis W.M. D
- 14 Entamoeba Histolytica W.M. D
- 15 Entamoeba Histolytica cyst D
- 16 Ephelota (Marine) D
- 17 Entamoeba Coli W.M. D
- 18 Euglena W.M. A
- 19 Entamoeba Histolytica Cyst D
- 20 Foraminifera Ooze W.M. E
- 21 Foraminifera Types a set of four slides per set E
- 22 Globigerina 4xD
- 23 Giardia Smear D
- 24 Leishmania Donovanii D
- 25 Leishmania Tropica C
- 26 Malaria Parasite (in H. Blood) C
- 27 M.P. (Developing Zygote in Mos.) D
- 28 Malaria Parasite (Signet ring) C
- 29 M. Parasite-Oocyst in Mosquito C
- 30 Monocystis (Trophozoite) C
- 31 Monocystis (Sporozoite) C
- 32 Monocystis (Mixed Stage) C
- 33 Mixed Protozoa-Amoeba, Euglens & Paramoecium in one slide C
- 34 Noctiluca W.M. D
- 35 Nyctotherus W.M. D
- 36 Opalina W.M. D
- 37 Polystomella W.M. D
- 38 Paramoecium W.M. B
- 39 Paramoecium in Fission D
- 40 Paramoecium Conjugation D
- 41 Plasmodium Vivax C
- 42 Plasmodium Malariai C
- 43 Plasmodium Falciparum C



Amoeba proteus, w.m.



Paramecium



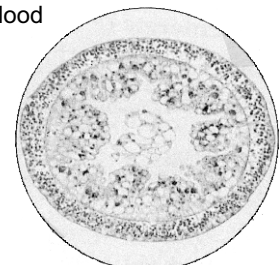
Euglena



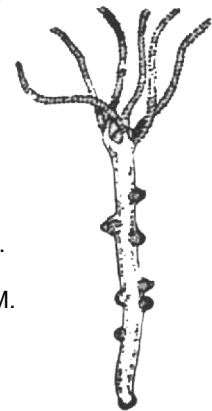
Trypanosoma

BZ

- 44 Radiolaria, Ooze (imported) E
 - 45 Stentor D
 - 46 Trypanosoma in Blood D
 - 47 Trichomonas D
 - 48 Volvox B
 - 49 Vorticella B
- Porifera**
- 50 Eustongia W.M. B
 - 53 Sponge Gemmule B
 - 56 Spongilla W.M. B
 - 57 Spongilla T.S. B
 - 58 Spicules (Monoaxon) B
 - 59 Sponge Spicules (Mixed) B
 - 60 Sponge Fibres B
 - 61 Sponge Skeleton B
 - 62 Sycon T.S. D
 - 63 Sycon L.S. D
 - 63 A. Grantia T.S. D
 - 63 B. Grantia L.S. D
- Coelentrata**
- 64 Alcyonium Spicules W.M. C
 - 65 Jelly Fish W.M. C
 - 66 Aurellia Tentaclocyst W.M. C
 - 67 Baugainvilla W.M. C
 - 68 Companularia W.M. C
 - 69 Diphyes W.M. D
 - 70 Eudendrium W.M. C
 - 71 Ephyra Larva W.M. E
 - 72 Hydra W.M. B
 - 73 Hydra with Nematocyst W.M. B
 - 74 Hydra with Bud W.M. C
 - 75 Hydra with Gonads W.M. C
 - 76 Hydra T. S. Body B
 - 77 Hydra L. S. Body C
 - 78 Hydra T. S. Testis C
 - 79 Hydra Ovary T. S. C
 - 80 Hydra Gastrula with Embryonic Theca W.M. C
 - 81 Hydra Medusae W.M. C
 - 82 Lytocarpus W.M. C
 - 83 Obelia Colony W.M. C
 - 84 Obelia Medusae W.M. C
 - 85 Pennaria W.M. C



Hydra T.S.



Hydra male



Obelia hydroids, w.m.

CODE VALUE Rs. A = 24, B = 28, C = 32, D = 40, E = 64

BZ

- 86 Plumularia W.M. C
- 87 Pleurobrachia W.M. C
- 88 Physalia-Section Showing Nematocyst C
- 89 Sea Anemone TS C
- 90 Sea Anemone LS C
- 91 Sertularia W.M. C
- 92 Telesto Colony C
- 93 Tubularia W.M. C
- 94 Hydractinia W.M. C
- 95 Gorgonia Spicules C



Tapeworm

Platyhelminthes

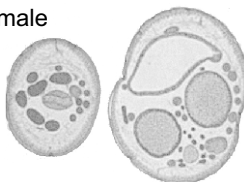
- 96 Echino Coccus W.M. E
- 97 Liver Fluke W.M. C
- 98 Liver Fluke TS middle Region C
- 99 Liver Fluke Gonad Region TS C
- 100 Liver Fluke TS Proboscis C
- 101 Liver Fluke TS Post. Region C
- 102 Liver Fluke Cercaria W.M. C
- 103 Liver Fluke Metacercaria W.M. C
- 104 Liver Fluke Redia W.M. C
- 105 Liver Fluke Sporocyst W.M. C
- 106 Liver Fluke Miracidium W.M. C
- 107 Liver Fluke redia with cercaria C
- 108 Liver Fluke eggs W.M. C
- 109 Planaria W.M. C
- 110 Planaria TS C
- 111 Schistosoma W.M. C
- 112 Tape worm scolex W.M. C
- 113 Tape Worm bladder worm W.M. C
- 114 Rumen fluke W.M. C
- 115 Fish Fluke W.M. C
- 116 Tape worm proglottid immature C
- 117 Tape worm proglottid (Gravid) C
- 118 Tape worm proglottid mature C
- 119 Tape worm eggs W.M. C
- 120 Tape worm in H. Intestine TS C



Planaria

Nemathelminthes

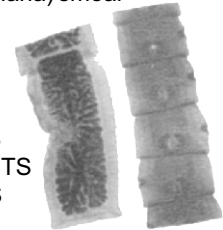
- 121 Ascaris male TS C
- 122 Ascaris female TS C
- 123 Ascaris male and female TS on same slide C
- 124 Ascaris pharynx TS C
- 125 Ascaris eggs W.M. C
- 126 Ancylostoma C
- 127 Hook worm W.M. C
- 128 Pin worm W.M. C



Ascaris lumbricoides

BZ

- 129 Dracunculus W.M. C
- 130 Guinea worm W.M. C
- 131 Oxyuris W.M. C
- 132 Trichinella spiralis cyst in muscles C
- 133 Vermicularis C
- 134 Waucheria bancrofti (Filaria) smear C
- 135 Necator Americana C
- 136 Enterobius C



Taenia pisiformis, Composite (wm)

Annelida

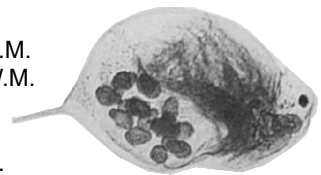
- 137 Earth worm ant. reg. LS B
- 138 Earth worm buccal reg. TS B
- 139 Earth worm pharynx TS B
- 140 Earth worm gizzard TS B
- 141 Earth worm clitellum TS B
- 142 Earth worm seminal vesicle B
- 143 Earth worm prostate gland B
- 144 Earth worm heart reg. TS B
- 145 Earth worm typhlosole reg. B
- 146 Earth worm intestine reg. B
- 147 Earth worm ovary W.M. B
- 148 Earth worm spermatheca W.M. B
- 149 Earth worm brain ring W.M. C
- 150 Earth worm septal nephridia W.M. B
- 151 Earth worm pharyngeal nephridia W.M. B
- 152 Earth worm setae W.M. B
- 153 Glossiphonia W.M. B
- 154 Heteronereis parapodia B
- 155 Heteronereis W.M. (small) B
- 156 Leech TS B
- 157 Leech nephridia W.M. B
- 158 Leech Jaw W.M. B
- 159 Leech (small) W.M. B
- 160 Nereis parapodia W.M. B
- 161 Nereis TS B
- 162 Nereis ant. reg. LS B
- 163 Trochophore larva W.M. B
- 164 Tubifex W.M. B
- 165 Sagitia W.M. B
- 166 Phoronis larva W.M. B



Earth worm

Crustacea

- 167 Argulus W.M. C
- 168 Alima larva W.M. C
- 169 Branchipus W.M. C
- 170 Cyclops W.M. C
- 171 Cypris W.M. C
- 172 Caprella W.M. C
- 173 Centipede W.M. stinging leg C
- 174 Daphnia W.M. C
- 175 Gammarus W.M. C



Daphnia

CODE VALUE Rs. A = 24, B = 28, C = 32, D = 40, E = 64

BZ

- 176 Lucifer W.M.
- 177 Megalopa W.M.
- 178 Mysis W.M.
- 179 Mite W.M.
- 180 Peripatus TS
- 181 Nauplius larva W.M.
- 182 Prawn TS
- 183 Prawn gill W.M.
- 184 Prawn gill VS
- 185 Prawn statocyst W.M.
- 186 Phyllosoma larva W.M.
- 187 Oniscus W.M.
- 188 Rotifer
- 189 Spider W.M.
- 191 Sacculina TS
- 192 Tick W.M.
- 193 Zoea larva W.M.
- 194 Metazoea larva



Statocyst

Arthropoda—(Insecta)

- 195 Aphid W.M.
- 196 Anopheles male W.M.
- 197 Anopheles female W.M.
- 198 Anopheles mouth parts male W.M.
- 199 Anopheles mouth part female W.M.
- 200 Anopheles eggs W.M.
- 201 Anopheles larva W.M.
- 202 Anopheles pupa W.M.
- 203 Auditory organ W.M.
- 204 Thoracic spiracle
- 205 Bird louse W.M.
- 206 Bed Bug Mouth parts
- 207 Bed bug W.M.
- 208 Cockroach mouth parts
- 209 Cockroach Salivary glands
- 210 Cockroach malphigian tubules
- 211 Cockroach hepatic caeca
- 212 Cockroach ovary TS
- 213 Cockroach testis TS
- 214 Cockroach leg WM
- 215 Cockroach spiracle thoarcic
- 216 Cockroach spiracle abdominal
- 217 Cockroach gizzard
- 218 Cockroach trachea W.M.
- 219 Cockroach muscles striated
- 220 Cockroach wing W.M.
- 221 Culex male W.M.
- 222 Culex female W.M.
- 223 Culex mouth part male W.M.
- 224 Culex mouth parts female W.M.
- 225 Culex larva W.M.
- 226 Culex eggs W.M.
- 227 Culex pupa W.M.



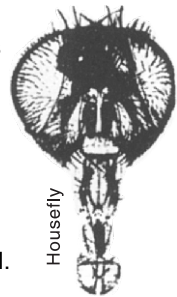
Culex



Mosquito
Head
Male

BZ

- 228 Compound eye W.M.
- 230 Grass hopper mouth parts
- 231 Grass hopper Testis
- 232 Grass hopper ovary
- 233 Housefly eggs W.M.
- 234 Housefly larva W.M.
- 235 Housefly pupa W.M.
- 236 Housefly male W.M.
- 237 Housefly female W.M.
- 238 Housefly mouth parts W.M.
- 239 Head louse W.M.
- 240 Honey bee mouth parts
- 241 Honey bee sting W.M.
- 242 Rat flea W.M.
- 243 Termite worker W.M.
- 244 Termite soldier W.M.
- 245 Thrips W.M.
- 246 Wasp sting W.M.
- 247 Pediculus eggs W.M.
- 248 Collembola
- 249 Drosophila eggs
- 250 Drosophila larva-I stage
- 251 Drosophila larva-II stage
- 252 Drosophila pupa W.M.
- 253 Drosophila male W.M.
- 254 Drosophila female W.M.
- 255 Drosophila white eyed
- 256 Drosophila yellow eyed
- 257 Drosophila red eyed
- 258 Drosophila black eyed
- 259 Drosophila vestigial winged
- 260 Insect Larva Protopod
- 261 Insect Larva Polypod
- 262 Insect Larva Oligopod
- 263 Insect Pupa—Coarate
- 264 Insect Pupa—Obtact
- 265 Insect Pupa—Exarate



Housefly



Tick, w.m.



House
fly wing

Arthropoda—(Insect Wings)

- 266 Anopheles wing W.M.
- 267 Butterfly wing W.M.
- 268 Culex wing W.M.
- 269 Cockroach wing W.M.
- 270 Grass-hopper wing W.M.
- 271 Honey bee wing W.M.
- 272 Housefly Wing W.M.
- 273 Termite wing W.M.
- 274 Butterfly scale W.M.



Mosquito Head
Female

Insect Mouth Parts

- 275 Biting & Chewing type
- 276 Fang musk (odonate)
- 277 Hemipteran type

CODE VALUE Rs. A = 24, B = 28, C = 32, D = 40, E = 64

BZ

- 278 Hymenopteran type C
- 279 Piercing & Sucking type C
- 280 Siphoning type W.M. C
- 281 Sponging type W.M. C

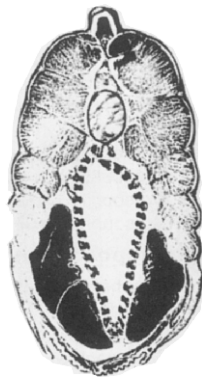
Insect Antenna

- 282 Clavate type C
- 283 Genuiculate type C
- 284 Filiform type C
- 285 Lamellate type C
- 286 Moniliform type C
- 287 Pectinate type C
- 288 Plumose type C
- 289 Serrate type C
- 290 Setiform type C
- 291 Cetaceous type C
- 292 Bipectinate type C
- 293 Stellate type C



Insect Legs

- 294 Scansorial C
- 295 Fossorial type C
- 296 Saltatorial C
- 297 Foragial C
- 298 Cursorial C
- 299 Typical insect leg C
- 300 Ambulatorial C
- 301 Raptorial C
- 302 Stridulatorial C



Minor Phylla

- 303 Rotifers W.M. C
- 304 Bugula W.M. C
- 305 Pectinatella C
- 306 Lingula larva C
- 307 Actinotroch larva C

Mollusca

- 308 Glochidium Larva C
- 309 Veliger's Larva C
- 310 Ospharidium of Pila C
- 311 Octopus arm TS C
- 312 Redula of Pila W.M. C
- 313 Sepia TS eye reg. C
- 314 Unio Shell ground thin C
- 315 Unio gill TS C
- 316 Unio foot TS C
- 317 Unio body & gill TS C

Echinodermata

- 318 Sea urchin pedicellaria W.M. C
- 319 Starfish pedicellaria W.M. C

BZ

- 320 Starfish tube feet W.M. C
- 321 Starfish arm TS C
- 322 Starfish blastula W.M. E
- 323 Starfish gastrula W.M. E



Lower Chordata

- 324 Amphioxus TS tail C
- 325 Amphioxus oral hood TS C
- 326 Amphioxus entire W.M. C
- 327 Amphioxus TS pharynx C
- 328 Amphioxus TS intestine C
- 329 Amphioxus TS atrium C
- 330 Amphioxus Gonad Region TS C
- 331 Balanoglossus TS trunk reg. C
- 332 Balanoglossus TS Gonads C
- 333 Balanoglossus ant. reg LS C
- 334 Balanoglossus TS proboscis reg C
- 335 Balanoglossus TS branchial reg C
- 336 Balanoglossus Collar reg. TS C
- 337 Ciona W.M. C
- 338 Herdmania spicules C
- 339 Doliolum W.M. E
- 340 Oikopleura W.M. E
- 341 Pyrosoma W.M. E
- 342 Salpa Sexual W.M. D
- 343 Salpa Asexual W.M. D
- 344 Tornaria larva W.M. D
- 345 Ammocoetes branchial reg. D
- 346 Ammocoetes post reg. D
- 347 Ascidian Larva WM D



Pisces (Fishes)

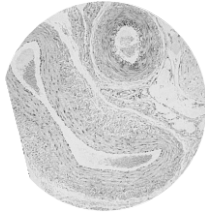
- 348 Ctenoid scale W.M. B
- 349 Cycloid scale W.M. B
- 350 Placoid scale W.M. B
- 351 Rhomboid scale W.M. B
- 352 Dogfish skin TS B
- 353 Fish TS head reg. C
- 354 Fish Ts gill reg. C
- 355 Fish skin TS C
- 356 Fish TS trunk reg. C
- 357 Fish TS air bladder C
- 358 Fish TS tail reg. C
- 359 Fish LS entire C
- 360 Shark embryo TS snout C
- 361 Shark embryo TS thro'grill C
- 362 Shark embryo TS thro'eye C
- 363 Shark embryo TS trunk C
- 364 Fish heart LS C
- 365 Fish stomach TS C



CODE VALUE Rs. A = 24, B = 28, C = 32, D = 40, E = 64

BZ

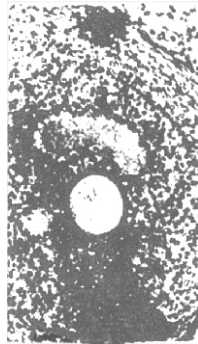
- 461 Blastula VS/W.M. C
- 462 Gastrula VS/W.M. C
- 463 Embryo W.M. 4 mm C
- 464 Embryo 4mm VS/W.M. C
- 465 Embryo 7 mm VS/WM C
- 466 Neural fold stage VS/W.M. C
- 467 External Gill stage W.M. C
- 468 Internal gill stage W.M. C
- 469 Yolk plug stage TS C
- 470 Tadpole W.M. C
- 471 Tadpole buccal reg. TS C
- 472 Tadpole gill reg. TS C
- 473 Tadpole trunk reg. TS C
- 474 Tadpole head reg. TS C
- 475 Tadpole heart reg. TS C
- 476 Tadpole eye reg. TS C
- 477 Tadpole tail reg. TS C
- 478 Frog ovary with mature eggs TS C
- 479 Frog testis mature sperms TS C



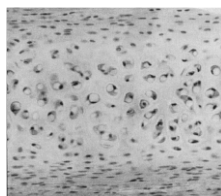
Artery and Vein

Mammal Histology (Cat, Dog, Goat)

- 480 Artery TS C
- 481 Aorta TS C
- 482 Blood smear C
- 483 blood smear showing lymphocytes & Esnophyll C
- 484 Brain cerebrum TS C
- 485 Brain cerebellum TS C
- 486 Bone calcified TS C
- 487 Bone decalcified C
- 488 Colon TS C
- 489 Duodenum TS C
- 490 Epiglottis TS C
- 491 Epiglottis LS C
- 492 Eye VS C
- 493 Eye Iris region VS C
- 494 Fallopian tube TS C
- 495 Heart TS C
- 496 Heart LS C
- 497 Ileum TS C
- 498 Jejunum TS C
- 499 Kidney C
- 500 Kidney LS C
- 501 Pancreas TS C
- 502 Liver TS C
- 503 Large intestine (Rectum) TS C
- 504 Lyraxn TS C
- 505 Lung LS C
- 506 Lung TS C
- 507 Lymph gland TS C
- 508 Medulla Oblangata TS C
- 509 Oesophagus TS C



Ovary, sec.



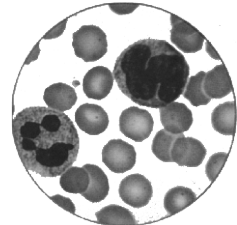
Hyaline Cartilage

BZ

- 510 Umbilical cord TS C
- 511 Ovary TS C
- 512 Ovary with corpus luteum TS C
- 513 Oviduct TS C
- 514 Nerve TS C
- 515 Spinal cord TS C
- 516 Skin VS C
- 517 Spleen TS C
- 518 Sperm smear C
- 519 Penis TS C
- 520 Trachea TS C
- 521 Testis TS C
- 522 Stomach Fundus TS C
- 523 Stomach Cardiac TS C
- 524 Rectum TS C
- 525 Retina VS C
- 526 Tendon Fibers W.M. C
- 527 Thymus Gland TS C
- 528 Tail TS C
- 529 Tongue TS C
- 530 Vermiform Appendix C
- 531 Vagina VS C
- 532 Vein TS C
- 533 Uterus TS C
- 534 Urinary Bladder TS C
- 535 Ureter TS C



Ureter, Human, c.s.



Human Blood smear

Normal Human Histology

- 536 Adipose Tissue D
- 537 Adrenal Gland T.S. D
- 538 Aorta T.S. D
- 539 Areolar Connective Tissue D
- 540 Artery T.S. D
- 541 Bar Bodies D
- 542 Blood Smear D
- 543 Bone Development D
- 544 Brouches of Lung D
- 545 Brain Stem T.S. D
- 546 Cardiac (heart) Muscles D
- 547 Cerebellum T.S. D
- 548 Cerebral Cortes T.S. D
- 549 Colon T.S. D
- 550 Compact Bone T.S. D
- 551 Compact Bone L.S. D
- 552 Cornea T.S. D
- 553 Coronary Artery T.S. D
- 554 Duodenum T.S. D
- 555 Eccrine Glands D
- 556 Epididymis T.S. D
- 557 Gall Bladder T.S. D
- 558 Epiglottis D



Kidney, Human, sec.

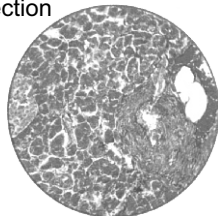


Human Appendix, C.S.

CODE VALUE Rs. A = 24, B = 28, C = 32, D = 40, E = 64

BZ

- 559 Glandular Epithelium D
- 560 Golgi Apparatus D
- 561 Hyaline Cortilage D
- 562 Holocrine Glands in Section D
- 563 Ileum T.S. D
- 564 Jejunum T.S. D
- 565 Kidney T.S. D
- 566 Larynx D
- 567 Lip T.S. D
- 568 Liver T.S. D
- 569 Lung T.S. D
- 570 Lymph Node T.S. D
- 571 Mammary gland active T.S. D
- 572 Mammary Gland Resting T.S. D
- 573 Mucous Glands D
- 574 Medulla oblongata T.S. D
- 575 Mucous Tissue D
- 576 Nerve T.S. D
- 577 Oesophagus T.S. D
- 578 Optic Nerve T.S. D
- 579 Ovary T.S. D
- 580 Ovary with Corpus Luteum D
- 581 Oviduct T.S. D
- 582 Pancreas T.S. D
- 583 Parathyroid Gland T.S. D
- 584 Penis T.S. D
- 585 Pituitary Gland T.S. D
- 586 Placenta T.S. D
- 587 Spinal Ganglion T.S. D
- 588 Prostate Glands T.S. D
- 589 Pseudostratified ciliated Columnar Epithelium D
- 590 Rectum T.S. D
- 591 Red Bone Marrow D
- 592 Reticular Fibres D
- 593 Retina T.S. D
- 594 Scalp V.S. D
- 595 Simple Ciliated Columnar Epithelium D
- 596 Simple Columnar Epithelium D
- 597 Simple Cuboidal Epithelium D
- 598 Skin T.S. D
- 599 Small Intestine T.S. D
- 600 Smooth (Involuntary) Muscles W.M. D
- 601 Sperm Smear D
- 602 Spinal Cord T.S. D
- 603 Spleen T.S. D
- 604 Squamous Epithelium- isolated cells D
- 605 Stomach Cardial Reg. T.S. D
- 606 Stomach Fundic Reg. T.S. D



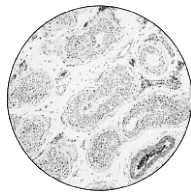
Human Pancreas, sec.



Human Esophagus



Human Acute Myocardial



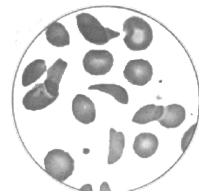
Human Fallopian

BZ

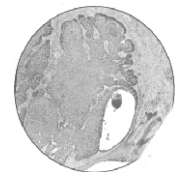
- 607 Stomach Pyloric D
- 608 Straited Muscles L.S. D
- 609 Straited Muscles T.S. D
- 610 Straited Muscles W.M. D
- 611 Stratified, Cornified Epithelium D
- 612 Stratified, Non Cornified squamous Epithelium D
- 613 Sympathetic Ganglion T.S. D
- 614 Testis T.S. D
- 615 Thalamus T.S. D
- 616 Thymus Gland T.S. D
- 617 Thyroid Gland T.S. D
- 618 Tongue T.S. D
- 619 Tongue with filiform Papillae D
- 620 Tongue with fungiform Papillae D
- 621 Tonsil T.S. D
- 622 Tooth L.S. D
- 623 Tooth T.S. D
- 624 Trachea L.S. D
- 625 Trachea T.S. D
- 626 Transitional Epithelium D
- 627 Ureter T.S. D
- 628 Urinary Bladder T.S. D
- 629 Urethra T.S. D
- 630 Uterus T.S. D
- 631 Vagina T.S. D
- 632 Vein T.S. D
- 633 Vermiform Appendix T.S. D
- 634 White Fibrous Cartilage D
- 635 White Fibrous Tissue D
- 636 Yellow Elastic Cortilage D



Tooth Adult



Human Sickle Cell Anemia, smear



Skin Cancer

Human Pathology

- 637 Acute Nephritis D
- 638 Adiposis of Heart D
- 639 Amyloid degeneration of spleen D
- 640 Anaemia Blood Smear D
- 641 Anthracosis of Lung D
- 642 Carcinoma Cervics Uteri D
- 643 Carcinoma Glandulare D
- 644 Carcinoma of Breast D
- 645 Carcinoma of Lung D
- 646 Carcinoma of Stomach D
- 647 Carcinoma of Large Intestine D
- 648 Cyst of Ovary D
- 649 Diptheria-section of Trachea D
- 650 Fatty degeneration of Liver D
- 651 Fibrocome of Skin D
- 652 Fibromyoma Uteri D
- 653 Gelatinus Carcinoma of rectum D

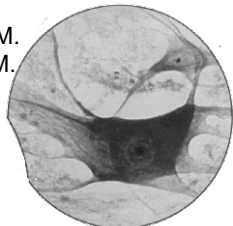
CODE VALUE Rs. A = 24, B = 28, C = 32, D = 40, E = 64

BZ

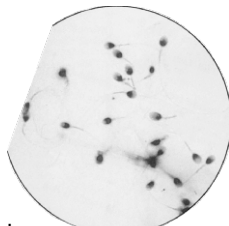
- 654 Hypertrophy of the Prostrate **D**
- 655 Leukamia Blood Smear **D**
- 656 Liver Carcinoma **D**
- 657 Liver Cirrhosis **D**
- 658 Lymphatic Leukamia of Liver **D**
- 659 Malignant Ovarian Tumor **D**
- 660 Melanosarcoma of Skin **D**
- 661 Millitary tuberculosis of Liver **D**
- 662 Miliary Tuberculosis of Long **D**
- 663 Parenchymatous degeneration of Kidney **D**
- 664 Sarcoma of Testicle **D**
- 665 Scirrhus carcinoma of breast **D**
- 666 Struma Nodosa of Thyroid **D**
- 667 Thickening of Intestine **D**
- 668 Tuberculosis of Kidney **D**

Parasitology

- 669 Ancylostoma—Hookworm **C**
- 670 Anopheles-Malaria Mosquito Female-Mouth parts **C**
- 671 Anopheles-Malaria Mosquito Male-Mouth parts **C**
- 672 Anopheles Larva W.M. **C**
- 673 Anopheles Pupa W.M. **C**
- 674 Ascaris Female T.S. **C**
- 675 Ascaris Male T.S. **C**
- 676 Ascaris Ova W.M. **C**
- 677 Cimex W.M. **C**
- 678 Culex Male Mouth parts W.M. **C**
- 679 Culex Female Mouth parts W.M. **C**
- 680 Culex Larva W.M. **C**
- 681 Culex Pupa W.M. **C**
- 682 Dermanyssus-Chicken Mite **C**
- 683 Dog Flae W.M. **C**
- 684 Eimeria **C**
- 685 Entamoeba Histolica **C**
- 686 Enterobius Vermicularis **C**
- 687 Fasciola Hepatica Ova **C**
- 688 Fasciola Hepatica Larvae **C**
- 689 Fasciola Hepatica T.S. **C**
- 690 Fasciola Hepatica W.M. **C**
- 691 Hymenolepid Proglottid **C**
- 692 Ixodex-Tick W.M. **C**
- 693 Leishmania Donovanii **C**
- 694 Monocystis **C**
- 695 Pediculus Egg W.M. **C**
- 696 Pediculus W.M. **C**
- 697 Plasmodium Vivex **C**
- 698 Plasmodium Falciparum **C**



Giant Multipolar Motor Neurons



Sperm, Human



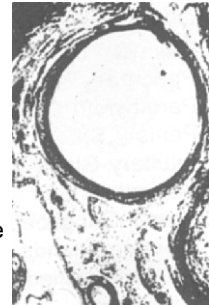
Testis

BZ

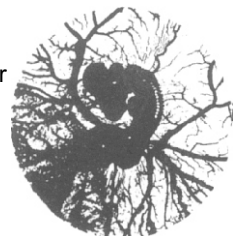
- 699 Plasmodium Malariae **C**
- 700 Rate Flae W.M. **C**
- 701 Schistosoma Monsoni **C**
- 702 Taenia/Monezia Scolex W.M. **C**
- 703 Taenia Pisiformis Proglottid **C**
- 704 Trichinella Spiralis **C**
- 705 Trypanosoma **C**

Aves Histology

- 706 Artery TS **C**
- 707 Bone TS **C**
- 708 Bird Pecten from eye **C**
- 709 Bird Feather Down **C**
- 710 Bird Feather Filoplume **C**
- 711 Bird Feather Contour **C**
- 712 Blood Smear **C**
- 713 Duodenum TS **C**
- 714 Epiglottis TS **C**
- 715 Eye VS **C**
- 716 Heart LS **C**
- 717 Penis TS **C**
- 718 Skin VS with Feather Buds **C**
- 719 Spleen TS **C**
- 720 Small Intestine TS **C**
- 721 Stomach TS **C**
- 722 Heart TS **C**
- 723 Large Intestine TS **C**
- 724 Liver TS **C**
- 725 Lung TS **C**
- 726 Kidney TS **C**
- 727 Brain Cerebrum TS **C**
- 728 Brain Cerebellum TS **C**
- 729 Nerve TS **C**
- 730 Oesophagus TS **C**
- 731 Pancreas TS **C**
- 732 Ovary TS **C**
- 733 Rectum TS **C**
- 734 Testis TS **C**
- 735 Trachea TS **C**
- 736 Vein TS **C**
- 737 Spinal Cord TS **C**
- 738 Crop TS **C**



Ovary Bird, sec.



Chick, 96 hr, w.m.



Chick, 60-70 hr, w.m.

Reptile Histology

- 739 Lung TS **C**
- 740 Trachae TS **C**
- 741 Cerebrum TS **C**
- 742 Cerebellum TS **C**
- 743 Heart LS **C**
- 744 Spinal cord TS **C**
- 745 Liver TS **C**
- 746 Pancreas TS **C**



Chick, 18 hour (wm)

CODE VALUE Rs. A = 24, B = 28, C = 32, D = 40, E = 64

BZ

- | | | |
|-----|---------------------|---|
| 747 | Kidney TS | C |
| 748 | Testis TS | C |
| 749 | Ovary TS | C |
| 750 | Oesophagus TS | C |
| 751 | Duodenum TS | C |
| 752 | Intestine TS | C |
| 753 | Stomach TS | C |
| 754 | Rectum TS | C |
| 755 | Skin TS | C |
| 756 | Blood Smear | C |
| 757 | Brain LS | C |
| 758 | Sperm Smear | C |
| 759 | Skin VS | C |
| 760 | Chromatophores W.M. | C |



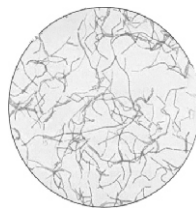
Chick
Sag. sec.

Chick Embryology

- | | | |
|-----|--------------------------------|-----|
| 761 | Ovary TS Showing Eggs | E+E |
| 762 | Sperm Smear | E+E |
| 763 | Testis TS Spermatozoa | E+E |
| 764 | 13 hrs. Perimitive Streak W.M. | E+E |
| 765 | 13 hrs. Premitive Streat TS | E+E |
| 766 | 18 hrs. Blastoderm W.M. | E+E |
| 767 | 18 hrs. Blastoderm TS | E+E |
| 768 | 21 hrs. 1-3 Somites W.M. | E+E |
| 769 | 21 hrs. Stage TS | E+E |
| 770 | 24 hrs. 7 Somites W.M. | E+E |
| 771 | 24 hrs. Stage TS | E+E |
| 772 | 30 Hrs. Stage W.M. | E+E |
| 773 | 30 hrs. Stage | E+E |
| 774 | 33 hrs. 8-13 Somites W.M. | E+E |
| 775 | 33 hrs. TS | E+E |
| 776 | 36 hrs. 14-17 Somites W.M. | E+E |
| 777 | 36 hrs. Somite TS | E+E |
| 778 | 36 hrs. Stage TS | E+E |
| 779 | 38 hrs. Appx. 28 Somites W.M. | E+E |
| 780 | 42 hrs. Appx. 30 Somites W.M. | E+E |
| 781 | 48 hrs. Stage W.M. | E+E |
| 782 | 48 hrs. Stage TS | E+E |
| 783 | 58 hrs. Stage W.M. | E+E |
| 784 | 58 hrs. Stage TS | E+E |
| 785 | 66 hrs. Stage W.M. | E+E |
| 786 | 66 hrs. Stage TS | E+E |
| 787 | 72 hrs. Stage W.M. | E+E |
| 788 | 72 hrs. Stage TS | E+E |
| 789 | 84 hrs. Stage W.M. | E+E |
| 790 | 84 hrs. Stage TS | E+E |
| 791 | 96 hrs. Stage W.M. | E+E |
| 792 | 96 hrs. Stage TS | E+E |
| 793 | 120 hrs. Stage W.M. | E+E |
| 794 | 120 hrs. Stage TS | E+E |



Chick, 48 hr



Bacillus

BZ

Mammalian Embryology

- | | | |
|-----|--|---|
| 795 | Section of ovary to show oogenesis | E |
| 796 | Section of testis to spermatogenesis | E |
| 797 | Sperm smear to show structure of sperm | E |
| 798 | Section of uterus with embryo in situ | E |
| 799 | 6 mm embryo TS | E |
| 800 | 6 mm embryo VS | E |
| 801 | 10 mm embryo TS | E |
| 802 | 10 mm embryo VS | E |

Non-Pathogenic Organism (Bacteria)

- | | | |
|-----|--------------------------|---|
| 803 | Bacteria typical | C |
| 804 | Coccus form | C |
| 805 | Bacillus form | C |
| 806 | Spirillum form | C |
| 807 | Strepto coccus (chain) | C |
| 808 | Vibro comma | C |
| 809 | Lactospirillum | C |
| 810 | Gram's positive coccus | C |
| 811 | Gram's negative coccus | C |
| 812 | Gram's positive bacillus | C |
| 813 | Gram's negative bacillus | C |

Pathogenic Organism (Bacteria)

- | | | |
|-----|-----------------------------|---|
| 814 | Staphylococcus aureus | D |
| 815 | Streptococcus pneumoniae | D |
| 816 | Streptococcus viridance | D |
| 817 | Neisseria gonorrhoeae | D |
| 818 | Bacillus anthracis | D |
| 819 | Bacillus subtilis | D |
| 820 | Clostridium tetani | D |
| 821 | Corynebacterium diphtheriae | D |
| 822 | Mycobacterium tuberculosis | D |
| 823 | Mycobacterium leprae | D |
| 824 | Escherichia coli | D |
| 825 | Salmonella typhi | D |
| 826 | Shingella shinga | D |
| 827 | Shingella dysenteriae | D |
| 828 | Vibro cholera (cholera) | D |
| 829 | Pasteurella (plague) | D |
| 830 | Haemophilus | D |
| 831 | Spirochaetes (syphilis) | D |



Carcinoma of Colon

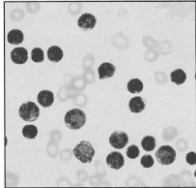
Human Pathological Preparations

- | | | |
|-----|--------------------------------|---|
| 832 | Leukemia lymphatic acute-blood | E |
| 833 | Leukemeia lymphatic chronic | E |
| 834 | Anemia pernicious | E |
| 835 | Lukemia, myeloid acute | E |
| 836 | Reticulocytes | E |

CODE VALUE Rs. A = 24, B = 28, C = 32, D = 40, E = 64

BZ

- 837 Normoblastic metaplasia E
- 838 Anemia, sickle cell E
- 839 Leucocytosis E
- 840 Eosinophilia E
- 841 Anaemia, iron deficiency E
- 842 Appendicitis-acute section E
- 843 Adrenal adenoma E
- 844 Aspergilosis lung E
- 845 Asthma bronchial E
- 846 Carcinoma=section E
- 847 Carcinoma, epithelioma E
- 848 Carcinoma, liver E
- 849 Carcinoma of prostate E
- 850 Glioma-brain lobe section E
- 851 Liver abscess E
- 852 Lung abscess E
- 853 Myeloma E
- 854 Syphilis, tertiary E
- 855 Tonsillitis-Section E
- 856 Tuberculosis-Lung section E
- 857 Yellow fever-Liver section E



Acute Lymphatic Leukemia



Cytology Slides

- 858 Animal Cell B
- 859 Chromosomes showing feulgen reaction D
- 860 Mitochondria in section D
- 861 Golgi apparatus D
- 862 Bar Bodies D
- 863 DNA slide D
- 864 RNA slide D
- 865 Giant chromosomes slide D

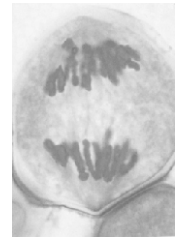
BZ

Mitosis Cell division

- 866 Metabolic nucleus C
- 867 Prophase C
- 868 Metaphase C
- 869 Anaphase C
- 870 Telophase C
- 871 Mitosis-set of 5 slides 5xC

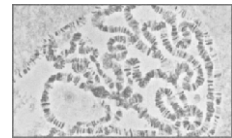
Meiosis Cell Division

- 872 Resting nuclei C
- 873 Leptotene stage C
- 874 Zygotene stage C
- 875 Diplotene stage C
- 876 Pachytene stage C
- 877 Diakinesis stage C
- 878 Metaphase I C
- 879 Anaphase-Telophase I C
- 880 Metaphase II C
- 881 Second anaphase telophase C
- Full set of 12 slides-Per set 12XC
- 882 Meiosis I, All significant stages in one slide D
- 883 Meiosis II, All significant stages in one slide D



Biocraft Special Cytological Events

- 884 Chromatin bridge E
- 885 Laggard Formation E
- 886 Ring formation E
- 887 Giant Chromosome E
- 888 Chiasma formation E
- 889 Multivalent formation E
- 890 Sticky chromosomes Drosophila chromosomes (sm) E
- 891 Precoceous Separation of chromosomes E
- 892 Unequal distribution of chromosomes E



Biocraft's Rare Slides

- | | | | | | |
|--------------------------------|---|-------------------------|---|---------------------------------------|-----|
| 1. Amoeba Proteus | E | 13. Tubulara | E | 27. Mega Lopa Larva | D |
| 2. Amoeba Binary Fission | E | 14. Cercaria Larva | D | 28. Caprella | E |
| 3. Polystomella | E | 15. Metacercaria | D | 29. Sagitta WM | D |
| 4. Radiolarians | E | 16. Redia Larva | D | 30. Sea Butterfly | E |
| 5. Monocystis | D | 17. Sporocyst Larva | D | 31. Appendicularia | E |
| 6. Nyctotherus | D | 18. Tomopteris WM | E | 32. Lingula Larva | E |
| 7. Opalina | D | 19. Ostracod | E | 33. Bipinnaria Larva | E |
| 8. Balantidium | D | 20. Lepas Mouth Parts | E | 34. Pluteus Larva | E |
| 9. Ceratium wm | E | 21. Cyphanutes Larva | E | 35. Salpa Sexual | D |
| 10. Diphyes | E | 22. Actinotroch Larva | E | 36. Doliolum WM | E |
| 11. Paramoecium | E | 23. Cercaria Larva | E | 37. Cyphanautes Larva | E |
| 12. Paramoecium Binary Fission | E | 24. Meta Cercaria Larva | D | 38. Chick Embryology (Refer our list) | E+E |
| | | 25. Nauplius Larva | D | | |
| | | 26. Zdea Larva | D | | |