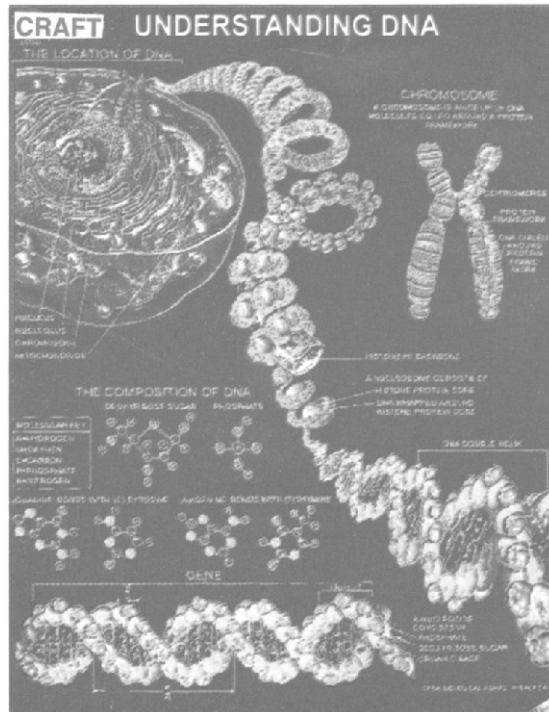
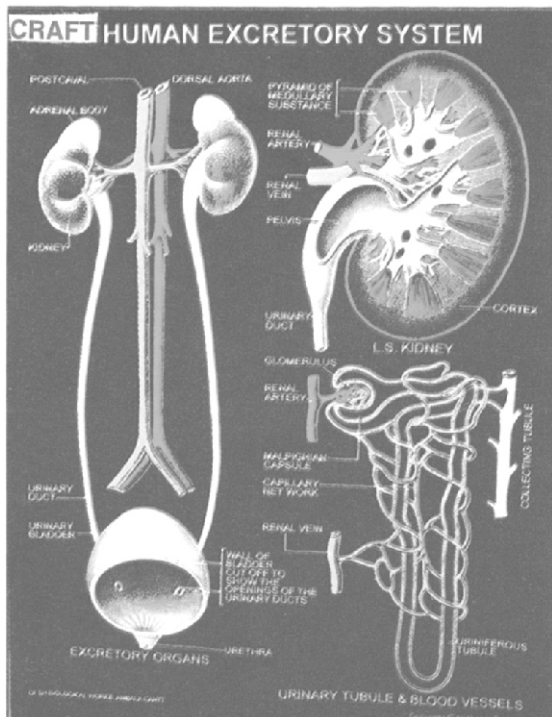


Biocraft's New Rexine Charts Zoology

All charts are 30" × 40" (75 × 100 cms) approximately. Made on water-proof rexine. These charts are strong and durable and do not wear-out, wrinkle or get spoiled. The colours are special water-proof, guaranteed to be permanent. Each chart fitted with rollers and die pressed hanger.

Price Rs. 480.00 Each



Cells & Tissues

- Z 1 Typical Animal Cell ultra Structure
- Z 2 Animal Mitosis
- Z 3 Animal Meiosis
- Z 4 Animal Tissues Part I—Connective tissue
- Z 5 Animal Tissues Part II—Epithelial & muscular
- Z 6 Animal Tissues Part III—Blood & nervous tissue
- Z 7 Gamatogenesis
- Z 8 Fertilization of Animals
- Z 9 Oogenesis
- Z 10 Spermatogenesis

Cytology

- Z 11 Cell Membrane Showing Structure and Function
- Z 12 Cell Wall Showing Structure & Functions
- Z 13 Endoplasmic Reticulum Showing Structure and Functions
- Z 14 Mitochondrion Showing Structure & Functions
- Z 15 Golgi Complex Showing Structure & Functions

- Z 16 Chloroplast Showing Structure and Functions
- Z 17 Nucleus Showing Structure and Functions
- Z 18 Chromosome Showing Structure & Functions
- Z 19 Protein Synthesis Showing Structure and Functions
- Z 20 DNA Showing Structure & Functions
- Z 21 RNA Showing Structure & Functions

Protozoa

- Z 22 Amoeba Structure & Locomotion
- Z 23 Plasmodium (Malarial Parasite) Stages
- Z 24 Paramecium
- Z 25 Euglena Structure & Life History
- Z 26 Entamoeba Histolytica Structure and Life history

Porifera, Coelenterata, Platyhelminthes

- Z 27 Phylum porifera showing sponges of principal types

Biocraft's Rexine Chart — Price Rs. 480.00 Each

- Z 28 Sycon Development Structure & Life History
- Z 29 Obelia Structure & Life History
- Z 30 Hydra Structure & Internal Anatomy
- Z 31 Ascaris Internal Structure of male & female
- Z 32 Tapeworm Structure & Life History
- Z 33 Liverfluke Structure & Life History
- Z 34 Hookworm Structure & Life History

Annelida

- Z 35 Earthworm Internal Anatomy
- Z 36 Earthworm Development
- Z 37 Earthworm Reproductive system
- Z 38 Earthworm Nervous system
- Z 39 Earthworm Digestive system
- Z 40 Earthworm Excretory system
- Z 41 Earthworm Circulatory system
- Z 42 Earthworm T.S. through Gizzard
- Z 43 Earthworm T.S. through Pharyngeal Region
- Z 44 Earthworm T.S. through Intestinal Region
- Z 45 Earthworm Respiratory system
- Z 46 Hirudinaria External Coelom and Haemocoelomic
- Z 47 Hirudinaria External character
- Z 48 Hirudinaria Coelom & Haemocoelomic-1
- Z 49 Hirudinaria coelm & Haemocoelomic-2
- Z 50 Hirudinaria coelm & Haemocoelomic-3

Arthropoda

- Z 51 Housefly Life History
- Z 52 Mosquito Life History (Showing Comparison of Culex & Anopheles)
- Z 53 Butterfly Life History
- Z 54 Honey Bee Life History
- Z 55 Silkworm Life History
- Z 56 Grasshopper Life History
- Z 57 Cockroach External Character & Mouth part
- Z 58 Cockroach Digestive system
- Z 59 Cockroach Respiratory system
- Z 60 Cockroach Circulatory system
- Z 61 Cockroach Reproductive system
- Z 62 Cockroach Nervous system
- Z 63 Prawn Internal Anatomy
- Z 64 Prawn external charactr (Appendages)
- Z 65 Prawn Reproductive system
- Z 66 Prawn Digestive system
- Z 67 Prawn Excretory system
- Z 68 Prawn Nervous system
- Z 69 Scorpion External Character Dorsal & Ventral view
- Z 70 Food Grain Pests
- Z 71 Prawn Circulatroy System
- Z 72 Scorpion External Characters Dorsal and Ventral view

Mollusca

- Z 73 Pila External Character
- Z 74 Pila Reproductive system
- Z 75 Pila Circulatory system
- Z 76 Pila Nervous system
- Z 77 Pila Sense Organs
- Z 78 Pila Respiratory system
- Z 79 Pila Digestive system
- Z 80 Unio External Character
- Z 81 Unio Circulatory system
- Z 82 Unio Internal Anatomy
- Z 83 Unio Nervous system
- Z 84 Unio Respiratory system
- Z 85 Unio Digestive system

Echinodermata

- Z 86 Starfish External character and general Anatomy
- Z 87 Starfish Water Vascular system
- Z 88 Starfish Internal Anatomy

Pisces

- Z 89 Scoliodon External character
- Z 90 Scoliodon General Viscera
- Z 91 Scoliodon Digestive system
- Z 92 Scoliodon Brain different views
- Z 93 Scoliodon Skeleton
- Z 94 Scoliodon Skull
- Z 95 Scoliodon Male Urinogenital system
- Z 96 Scoliodon Female Urinogenital system
- Z 97 Scoliodon Venous system
- Z 98 Scoiodon Cranaial Nervous system
- Z 99 Scoliodon Receptor organs
- Z 100 Labeo Rohita External Character
- Z 101 Labeo Rohita Axial Skeleton
- Z 102 Labeo Rohita Skull

Lower Chordata

- Z 103 Amphioxus External-Character
- Z 104 Amphioxus General Anatomy
- Z 105 Amphioxus T.S. through Different Regions
- Z 106 Amphioxus Development
- Z 107 Amphioxus Excretory system

Amphibia

- Z 108 Frog External Character
- Z 109 Frog Internal Anatomy
- Z 110 Frog skeleton
- Z 111 Frog skull different views
- Z 112 Frog Development part 1 showing stages from Egg to Gastrulation

Biocraft's Rexine Chart — Price Rs. 480.00 Each

- Z 113 Development of Frog part II showing Gastrula to newly hatched Tadpole
- Z 114 L.H. Frog Showing Larvae development Metamorphosis
- Z 115 Frog Digestive system
- Z 116 Frog Nervous system
- Z 117 Frog Reproductive system
- Z 118 Frog Excretory system
- Z 119 Frog Arterial system
- Z 120 Frog Venous system
- Z 121 Frog Respiratory system
- Z 122 Frog muscular system
- Z 123 Frog Lymphatic system
- Z 124 Frog Cranial nervous system
- Z 125 Frog Sense Organs
- Z 126 Frog V.S. Skin
- Z 127 Frog Brain different views
- Z 128 Frog Heart different views
- Z 129 Frog Simple Tissues
- Z 130 Frog Compound Tissues
- Z 131 Frog Eye

Reptilia

- Z 132 Types of Reptiles
- Z 133 Snakes Poisonous & Non-poisonous Types
- Z 134 Varanus Skull Different views
- Z 135 Varanus Skeleton
- Z 136 Varanus Circulatory system
- Z 137 Varanus Excretory system
- Z 138 Lizard Various systems
(Each system on separate chart)
- Z 139 Calotes Various systems
(Each system on separate chart)
- Z 140 Uromastix Various Systems
(Each on separate chart)

Aves

- Z 141 Pigeon External Character
- Z 142 Pigeon Internal Anatomy
- Z 143 Pigeon Skeleton
- Z 144 Pigeon various systems
(Each on separate chart)
- Z 145 Fowl Skeleton
- Z 146 Chick Development
- Z 147 Chick Embryo-16, 18, 24, 27, 28, 30, 33, 43, 48, 56, 72, 96 hrs (Each on separate Chart)
- Z 148 Beaks of Birds
- Z 149 Claws of Birds

Mammal

- Z 150 Rat External Character
- Z 151 Rat general Anatomy

- Z 152 Rat Digestive system
- Z 153 Rat Male Reproductive system
- Z 154 Rat Female Reproductive system
- Z 155 Rat Arterial system
- Z 156 Rat Venous system
- Z 157 Rat Nervous system
- Z 158 Rat Respiratory system
- Z 159 Rat Skeleton
- Z 160 Rat Brain different views
- Z 161 Rat Heart different views
- Z 162 All the above systems are available on Rabbit also (Set of 10)

Comparative Study

- Z 163 Vertebrate Hearts
- Z 164 Vertebrate Brains
- Z 165 Vertebrate Skulls
- Z 166 Vertebrate Limbs
- Z 167 Vertebrate Girdles
- Z 168 Vertebrate Urinogenital system
- Z 169 Vertebrate Embryos
- Z 170 Vertebrate Arterial arches Circulation
- Z 171 Vertebrate Genital Apparatus and venous system

Evolution

- Z 172 Evolution Tree (Phylogenetic Tree)
- Z 173 Animal kingdom (Classification)

Human Anatomy

- Z 174 Muscular System
- Z 175 Muscular Bach View
- Z 176 Skeleton-1 (Entire Skeleton Vertebral Column & Skull)
- Z 177 Nervous system
- Z 178 Autonomic Nervous System
- Z 179 Arterial System
- Z 180 Venous System
- Z 181 Lymphatic System
- Z 182 Digestive System
- Z 183 Respiratory System
- Z 184 Excretory System
- Z 185 Female Reproductive System
- Z 186 Male Reproductive System
- Z 187 Endocrine System
- Z 188 Human Immune System

Structures/Organs—Human

- Z 189 Heart
- Z 190 Brain
- Z 191 Spinal Nerves

Biocraft's Rexine Chart — Price Rs. 480.00 Each

- Z 192 Skeleton-II (Vertebrae, Scrum & Thoracic Cage)
- Z 193 Vertebral Column
- Z 194 Human Skull
- Z 195 Head & Neck
- Z 196 Eye
- Z 197 Ear
- Z 198 Ear, Nose & Thormat
- Z 199 Skin
- Z 200 Nephron
- Z 201 Shoulder & Elbow
- Z 202 Hand & Wrist
- Z 203 Hip & Kneee
- Z 204 Foot & Angle
- Z 205 Teeth
- Z 206 Human Liver
- Z 207 Kidney
- Z 208 Pregnancy & Birth
- Z 209 Pharynx & Larynx
- Z 210 Embryo Development
- Z 211 Human Blood Cells
- Z 212 Human Blood Cells
- Z 213 Nose
- Z 214 Tongue
- Z 215 Human Joints
- Z 216 The Cell
- Z 217 Menstrual Cycle
- Z 218 Spinal Cord
- Z 219 Sense Organs
- Z 220 Muscles
- Z 221 Bones & Cartilage
- Z 222 Oogenesis
- Z 223 Spermatogenesis

Structures/Organs—Human

- Z 224 Cardiovascular Disease
- Z 225 Malaria
- Z 226 Tuberculosis
- Z 227 Cholera
- Z 228 Typhoid
- Z 229 Dysentery
- Z 230 Diarrhoea
- Z 231 Filariasis (Ring Worm)
- Z 232 Leprosy
- Z 233 Pathogenic Protozoa
- Z 234 Entamoeba (Life Cycle)
- Z 235 Acquired Immuno Deficiency Syndrome
- Z 236 Enterbius Vermicularis (Pinworm)

- Z 237 Malarial Parasite Life History
- Z 238 Ascaris Lumbricoides Life History
- Z 239 Fasciola Hepatica (Liver Fluke)
- Z 240 Ancylostoma duodenale
- Z 241 Deficiency Diseases
- Z 242 Vectors of Human Diseases
- Z 243 Colour Blindeness & Hemophilia
- Z 244 Prevention of Diseases
- Z 245 L.H. Leishmania & Tryposoma

Cytology and Genetics Chart

- Z 246 Cell Cycle
- Z 247 Cell Membrane
- Z 248 Plasma Membrane
- Z 249 Plant Cell Wall
- Z 250 Endoplasmic Reticulum
- Z 251 Mitochondria
- Z 252 Golgi Complex
- Z 253 Chloroplast
- Z 254 Nucleus
- Z 255 The Chromosome
- Z 255 A. Gene Map—Male
- Z 255 B. Map—Female
- Z 256 Protein Synthesis
- Z 257 DNA
- Z 258 RNA
- Z 259 Centrioles, Flagella & Cilia
- Z 260 Enzymes
- Z 261 Ribosomes & Lysosomes
- Z 262 Microbodies
- Z 263 Monohybrid Crossing—Incomplete Dominance
- Z 264 Dihybrid Crossing
- Z 265 Monohybrid Crossing
- Z 266 Mendelian Explanation Garden Pea—Complete Dominance
- Z 267 Sex linked inheritance in Drosophila Condominance (Coat, Colaur in Andalusian Fool)
- Z 268 A. Mutations & Choromosomal Aberrations
- Z 269 B. Linkage & Crossing over
- Z 270 Homologous Organs—Plants
- Z 271 Analogous Organs—Animals
- Z 272 Homologous Organs—Animals
- Z 273 Pedigree Analysis—Rolling Tongue
- Z 274 Pedigree Analysis—Blood Group
- Z 275 Pedigree Analysis—Color Blindness
- Z 276 Pedigree Analysis—Window's Peak

Craft's Periodic Table—Multi Coloured on Rixin	Rs. 445
Craft's Periodic Table—Multi Coloured Laminated 70 × 100 cm	Rs. 175
Craft's Periodic Table—Multi Coloured Laminated Long form 100 × 135 cm	Rs. 310