

CODE VALUE J=128, K=160, L=180 M=200, N=240, P=280, R=320

BDS		Rs.
87	Minyas with Float	K
88	Pennatula	K
89	Pachycerianthus	K
90	Pteroides	K
91	Renilla (imported)	K
92	Sagartia (W-Coast)	K
93	Sarcophytum	K
94	Sclerophytum	K
95	Sea-Anemone	K
96	Sea-Anemone Colonial	K
97	Sea-Anemones TS & LS showing mesenteries	K
98	Sea-Anemone on Hermit carb	K
99	Spongedes	K
101	Studeroites	K
102	Stomolophus	K
103	Stoichactis (Japan)	K
104	Sphenopus	K
105	Virgularia (sea Pen)	K
106	Collection of Anthozoa Aset of 6 important species	R+J



Pennatula

Coelenterata-Scyphozoa

107	Acquoera	K
108	Aurelia Aurita	K
109	Cassiopea	K
110	Charybdaea	K
111	Chiropsalmus	K
112	Chiropentha	K
113	Cubomedusa	K
115	Halliclystus	K
116	Jelly Fish	K
117	Naracomedusae	K
119	Lucernaria	K
120	Pilema	K
121	Pelagia	J
122	Rhizostoma	J
124	Collection of Scyphozoa Aset of six important species	R+J



Jelly fish

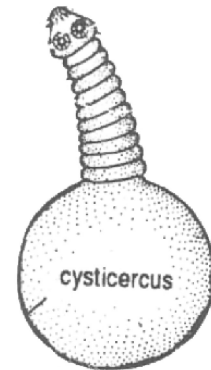
Ctenopora

125	Beore (Japan)	R
126	Cestum (Venus girdle)	R
127	Coeloplana (red sea)	L
128	Ctenoplana (red sea)	L
129	Hormiphora	L
130	Pleurobrachia	L

BDS		Rs.
Platyhelminthes		
131	Amphilina	L
132	Bipalium	L
133	Diplozoan	K
134	Dugesia	L
135	Echinococcus	L
136	Fasciola (liver fluke)	K
137	Fish fluke	K
138	Gastrodiscus	K
139	Gryodactylus	K
140	Gryocotyle	K
141	Homologaster	K
142	Ligula	K
143	Planaria marine large	K
144	Paramphistomum	K
145	Polystoma	K
146	Planaria freshwater	K
147	Ruman fluke	K
148	Rhyncinchodemus	K
149	Schistosoma mansoni (blood fluke)	K
150	Tape worm	K
151	Taneiasolium	K
152	Taenia Saginata	K
153	Tape work moniezia	K
154	Tape worm Dyphyliidium	K
155	Tetarrhynchus	K
156	Tape worm cysticercus (bladder worm)	K
157	Tape worm LH	M
159	Collection of Platyhelminthes Set of 5 selected species	R+J



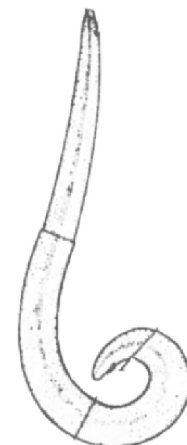
Pleurobrachia



cysticercus

Nemathelminthes

160	Ascaris male	L
161	Ascaris Female	L
162	Ascaris Male & female	M
163	Ancylostoma	K
164	Dracunculus	K
165	Entrobium	K
166	Filaria (waucheria)	K
167	Guinea worm	K
168	Loa micro Filaria	K
169	Oxyuris	K
170	Syngamus	K
171	Sand dwelling nematode	K
172	Thread worm	K
173	Trichinella spiralis male female with cyst	K

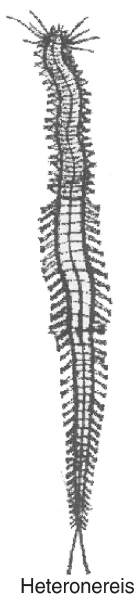
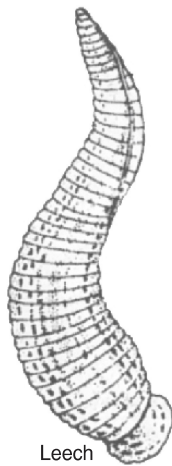


Ascaris

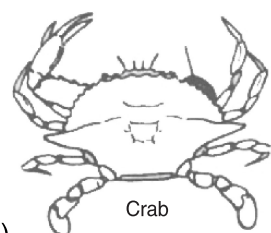
* See Rates under imported & Rare Specimen Section

CODE VALUE J=128, K=160, L=180 M=200, N=240, P=280, R=320

BDS	Rs.
174 Trichuras	K
175 Vermicularia	K
176 Collection of Namathelminthes Set of 5 selected species	R+J
Annelida	
177 Aphorodite	R+J
178 Amphitrite rare*	R
179 Arenicola UK*	R+R
200 Aulostoma horse leech	P
202 Acanthobdella	R
203 Branchion	R
204 Chaetopterus USA large*	
205 Chloia	K
206 Dasychone	K
207 Earthworm (pheritima)	K
208 Earthworm copulating	K
209 Eurythoe	K
210 Eunice (Mexico)	K
211 Eolis	K
212 Glycera USA*	K
213 Glossiphonia	K
214 Haemidipsa	K
215 Heteronereis	R+K
216 Herpobdella USA	R
217 Hermione	K
218 Hermothoe	K
219 Lumbricus USA*	R+R
220 Lepidonotus	K
221 Leech (hirudinaria)	K+J
222 Leech marine	K+J
223 Marphysa (Jawa)	K+J
224 Mega scolex	K+J
225 Myxicola	K+J
226 Nereis & Heteronereis in same jar	R+R
227 Nereis	K
228 Ozobranchus (Jawa) rare	L
229 Onuphis (rare)	K
230 Polynone UK	N
231 Pionosyllus (Jawa)	K
232 Pantobdella USA*	
235 Perenereis	K
236 Pectinaria	K
237 Polygordius	P
238 Sabella	K
239 Syllis	P
240 Spirorbis on leaf UK	K
241 Serpula	K



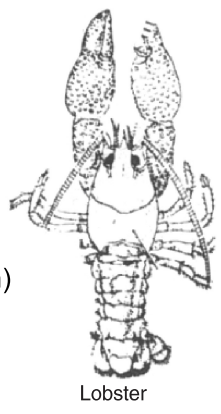
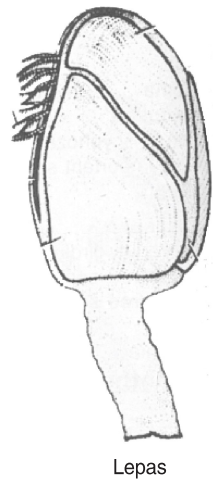
BDS	Rs.
242 Serpulid	K
243 Scolops	K
244 Tomopterus	P
245 Tubifix	K
246 Terebella	P
Minor Phyla	
247 Amathia	P
248 Bonelia female*	R+P
249 Bonellia male*	R
250 Bugula	K
251 Crissa	N
252 Dendrostoma	K
253 Echiurus UK*	R
254 Lapralia	K
255 Lingula	K
257 Membranipora	K
258 Neilia occultata	K
259 Phoronis	R+P
262 Sipunculus	M
263 Sagitta	N
264 Thalasseme rare	N
265 Classification of Minor Phyla set of 6 specimens in jar	R+P
Crustacea	
266 Albunea	K
267 Astergatis crab	K
268 Alima larva	K
269 Amphipoda	K
270 Anilocra on host	K
271 Armadillium	K
272 Apus	R
273 Argulas	N
274 Astacus	N
275 Balanus	K
276 Bopyrus	K
277 Branchipus	K
278 Calappa crab	K
279 Crab	K
280 Cypris	K
281 Cray-fish (imported)	R
282 Cymothoa	K
283 Cancer crab	K
284 Cradisa (herberst)	K
285 Dorippe crab	K
286 Dormia rhumphi crab	K
287 Doclea crab	K
288 Daphnia	K



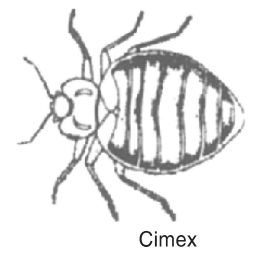
* See Rates under imported & Rare Specimen Section

CODE VALUE J=128, K=160, L=180 M=200, N=240, P=280, R=320

BDS	Rs.
289 Emertia	K
290 Eupagurus	K
291 Fiddler crab	M
292 Gammarus	K
293 Gonodactylus	L
294 Gelasimus crab	L
295 Hermit crab with shell	K
296 Hermit crab without shell	K
297 Hippa	K
298 Land crab	L
299 Lobster	R
300 Lepas colony	K
301 Ligia	K
302 Leucosia crab	K
303 Lapiidurus	K
304 Megalopa larva large	K
305 Matuta Victor crab	K
306 Metapaneus	K
307 Mysis	K
308 Neptunus crab	K
309 Nebalia	K
310 Oniscus	K
311 Palaemon (prawn)	K
312 Penaeus (marine prawn)	K
313 Pelinurus (rock lobster)	R
314 Pagurus with shell	K
315 Sacculina with host	M
316 Sphaeroma rock boring	L
317 Squilla	K
318 Shrimp	K
319 Sterptocephalus	K
320 Scylla	K
321 Spider crab	L
322 Thenus (cray fish)	L
323 Zoea Larva	K
Insecta	
324 Anthia	K
325 Ant	K
326 Antlion larva	K
327 Apis (Honey bee) drone	K
328 Apis (Honey) queen	K
329 Apis (Honey) worker	K
330 Aphid	K
331 Bed bug (Cimex)	K
332 Bellostoma	M
333 Bombyx mori (Silkmoth)	K



BDS	Rs.
334 Bumble bee	K
335 Blow-fly	K
336 Cicada male	M
337 Cicade female	M
338 Coccinella	K
339 Cricket	K
340 Drosophila	K
341 Exarate pupa	K
342 Forficula (earwig)	K
343 Fire fly	K
344 Grass-hopper	K
345 Gryllotapa molecricket	M
346 Gryllus	K
347 Gersis (water strider)	K
348 Jewel beetle	K
349 Katydids	K
350 Lac insects	K
351 Lepisma (silver fish)	K
352 Locust	K
353 Larva oligopod	L
354 Larva apodus	L
355 Larva polypod	L
356 Ligia	K
357 Long horned beetle	K
358 Lacebug	K
359 May fly	K
360 Mosquito anopheles	K
361 Mosquito culex	K
362 Moth	K
363 Musca (house fly)	K
364 Nepa water scorpion	K
365 Oryctes beetle	K
366 Obctate pupa	L
367 Peripianata (cockroach)	K
368 Pediculus (head louce)	K
369 Praying mantis	L
370 Ranantra	K
371 Stink Bug	K
372 Stick insect	K
373 Schistocerca	K
374 Termite queen	L
375 Termite soldier	K
376 Termite winged	K
377 Termite worker	K
378 Thrips	K
379 Tree-hooper	K
380 Wasp	K
381 Water-bug	K

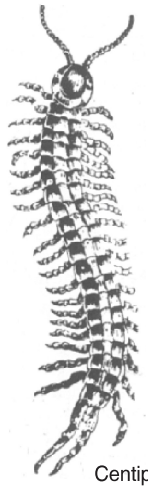


* See Rates under imported & Rare Specimen Section

CODE VALUE J=128, K=160, L=180 M=200, N=240, P=280, R=320

BDS		Rs.
Crop Pests Spcimens		
382	Autocaphora Paviecollis (Red P. Beetle)	K
383	Docus Cucurbitae (Pumpkin fruit fly)	K
384	Tertanychus Tetrius (Veg. Mite)	K
385	Epilachna (Hadda Beetle)	K
386	Callosotruchus Meculatus (P. Beetle)	K
387	Sitophilus Oryaza (R. weevil)	K
388	Sitotraga Cerealela (G. Moth)	K
389	Sitotraga Cerealela (F. Moth)	K
390	Tribolium Castaneum (Planer Beetle)	K
391	Rhizoperlla Dominica (Lesser G. Beetle)	K
392	Dytiscus (Diving Beetle)	K
393	Selostoma (G.W. Bug)	K
394	Notonecta (Back swimmer)	K
395	Nepa (W.S)	K
396	Ranatra (W.S.I)	K
397	Pyrilla Perpusilla (S.C. Leaf Hopper)	K
398	Aleurolobus Barodouis (S.C. Fly)	K
399	Scirpophaga Nivelia (S.C. Top borer)	K
400	Emmalocera Deperisella (S.C. Root Borer)	K
401	Bissetia Steniellus (Gurdaspur boree)	K
402	Platyedra Gossypiella (Pink Ballworm)	K
403	Pys-dercus Cingulatus (R.C. Bug)	K
404	Mellocercus Maculosus (C. Weevil)	K
405	Chiretognus Trachshderus (S.G.H)	K
406	Empoasca Devastans (C. Jaggid)	K
407	Sesamia Lufereuse (Stem borer)	K
408	Leptocorisavaricornis (R. Bug)	K
409	Hieroglyphus Banian (R.G.H)	K
410	Schaenobius Incertellus (R.S.B)	K
411	Hispa Arnigora (R. Hispa)	K
412	Aphid (Syphocoryne) (M. Pest)	K
413	Idiocerus Atkinsoni (M.L.H)	K

Arachnida		
414	Buthus	K
415	Boophius	K
416	Chelifer	K
417	Dermacentor	K
418	Diadem spider	K
419	Galeodes USA	M
420	Hylomma	K
421	Hoemaphysalis	K
422	Ixodus	J
423	Ixodoidea	J
426	Mite	K
427	Nymphone	K
428	Opilio Spider	K
429	Ornithodoros	K



Centipede

BDS		Rs.
430	Phrynishus	K
431	Pyconogonid (Sea Spider)	I
432	Spider	K
433	Tarantula Poinsous	N
434	Tick	K
435	Trumbiculla	K
436	Whip Scorpion	K
437	Trom bidium (Velvet spider)	K

Onychophora

438	Peripatus Capensis* (Newzealand) Large 2" to 3"	
-----	--	--

Trilobita

439	Cast of Trilobite-A cast from Plaeozic Rocks showing Cehalic shield Eye Fixed check loeura Pygidium	N + P
-----	---	-------

Myriapoda

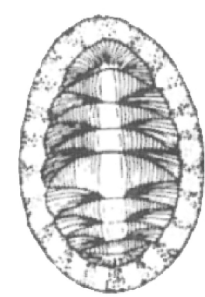
440	Centipede	K
441	Arenea	K
442	Millipede	K
443	Pil Millipede	K
444	Julus (Rare)	K
445	Polyxenus	K
447	Polydesmus	K
448	Scutigera	K
449	Sphaeortherium	K
450	Scolopendra	K



Millipede

Mollusca

451	Aplysia (Sea Hare)	K
452	Ariophanta	K
453	Argunata (Paper shell) USA*	R+R
454	Aspergillum shell	R
455	Aeolis	P
456	Arca	K
457	Bornella	K
458	Buccinium	K
459	Bulla	K
460	Cardium	K
461	Chiton	K
462	Dendrodoris (rare)	P
463	Dendronotus	K
464	Dentalium	K
465	Dolabella	K
466	Donex	K
467	Doris	M
468	Eolis coroata	M
469	Elysia	M



Chiton

* See Rates under imported & Rare Specimen Section

CODE VALUE J=128, K=160, L=180 M=200, N=240, P=280, R=320

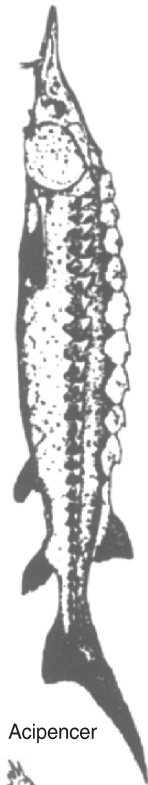
BDS

Rs.

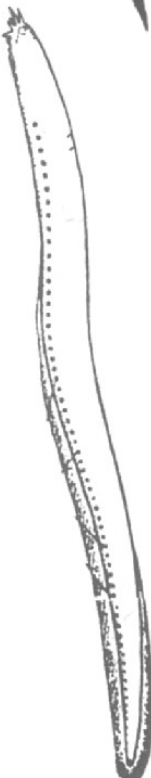
- 565 Salpa asexual L
- 566 Tornaria larva in tube M

Pisces (Fishes)

- 567 Amphipnous L
- 568 Amphisile (transparent) L
- 569 Alosa fallax M
- 570 Angel fish L
- 571 Anabas (perch) K
- 572 Anacanthus L
- 573 Anguilla L
- 574 Antennarius L
- 575 Acipencer USA* L
- 576 Astrape L
- 577 Arius with egg L
- 578 Amia calva (bow fish) USA* L
- 579 Ambasis L
- 580 Apocryptes L
- 581 Balistis (trigger fish) L
- 582 Belone (garpike) L
- 583 Barbus L
- 584 Bagarius L
- 585 Beleopthalmus L
- 586 Botia L
- 587 Centaiscus (glass fish) L
- 588 Chaetoessus M
- 589 Chetodon M
- 590 Chrysophrys M
- 591 Choridactylus M
- 592 Caranx L
- 593 Callichrous M
- 594 Chela M
- 595 Carassius (Gold) L
- 596 Chiloscylidium M
- 597 Cirrahina M
- 598 Cobotis aurata M
- 599 Calomoichthys (Reed Fish)* L
- 600 Colia L
- 601 Catla fish CXXXIV L
- 602 Clarius (cat fish) L
- 603 Codfish L
- 604 Coryphaena L
- 605 Cuchia L
- 606 Cybium L
- 607 Channa L
- 608 Clupea L
- 609 Chimera large USA* M
- 610 Chiloscylidium M
- 611 Carcharias M
- 612 Cynoglossus L



Acipencer



Myxine

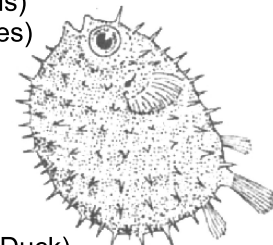
BDS

Rs.

- 613 Dactylopterus M
- 614 Diodon (porcupine fish) M
- 615 Drepane M
- 616 Discuss fish M
- 617 Dorychthys M
- 618 Dentex dentex M
- 619 Equila M
- 620 Echineis (sucker fish) M
- 621 Eel Angulla L
- 622 Eel Muraena L
- 623 Eel larva (Leptocephalus) M
- 624 Eleotris M
- 625 Engrauils M
- 626 Exostoma L
- 627 Etroplus L
- 628 Exocoetes (flying fish) L
- 629 Fistularia (flute fish) L
- 630 Flat fish (cynoglossus) L
- 631 Flat fish (pleuronectes) L
- 632 Gagata M
- 633 Gastrotokous M
- 634 Govius L
- 635 Gobiush fish L
- 636 Glyhidodon M
- 637 Helieutaea stellata M
- 638 Harpodon (Bombay Duck) L
- 639 Haplochilus M
- 640 Heteropneustus L
- 641 Hilsa L
- 642 Hippocampus Replica L
- 643 Hippocampus Male or Female (Replica) R
- 644 Haptanchus USA* M
- 645 Histophorus M
- 646 Hermirhampus L
- 647 Holocentrum M
- 648 Jerdonia M
- 649 Ketengus M
- 650 Labeo (rohu) L
- 651 Lophius L
- 652 Lepidosteus large USA* M
- 653 Lepidosiren (lungfish)* M
- 654 Lutianus M
- 655 Lobotes M
- 656 Mackerel fish L
- 657 Mystus L
- 658 Macrones L
- 659 Mugil (mullet) L
- 660 Mastacembalus L
- 661 Notopterus L



Labeo



Diodon

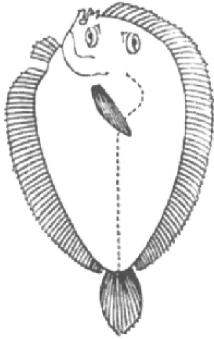


Ostracoin

* See Rates under imported & Rare Specimen Section

CODE VALUE J=128, K=160, L=180 M=200, N=240, P=280, R=320

BDS	Rs.
662 Neo-ceratodus (Australia)*	
663 Ophichthys	M
664 Ophiocephalus	L
665 Ostracoin (coffer fish)	L
666 Osphronemus	L
667 Pellona	M
668 Pericanthus	M
669 Periophthalmus	L
670 Plagusia	M
671 Plotosus	M
672 Pteroplated	M
673 Pterois (scorpion fish)	L
674 Pseudorhombus	M
675 Polpyterus (lobe fish large)*	
676 Pegasus dragonis	M
677 Polydon spatula*	
678 Pleuronectus	L
679 Polynemus	M
680 Psettus	M
681 Pseudeutropius	M
682 Pseudosynanceia	M
683 Rhinoptera	M
684 Rita Rita	L
685 Rohtee	M
686 Saurus	M
687 Sciaena	L
688 Synoglossus	L
689 Serranus	M
690 Synanidium	M
691 Seiaena	L
692 Stormateous	M
693 Saurus	M
694 Saccobranchus	L
695 Salmon	L
696 Scoliodon	L
697 Scoliodon embryo with yolk	L
698 Scorpaenopsis	M
699 Semiplotus	M
700 Sole	L
701 Sphyaena	L
702 Sturgeon USA*	
703 Synaptura	M
704 Sardinella	M
705 Silarius	M
706 Symbrachus	M
707 Scyllium	M
708 Schizothorax	M
709 Trichogaster	M



Pleuronectus

BDS	Rs.
710 Tetradon (globe fish)	M
711 Therapon	M
712 Torpedo (electric ray)	L
713 Trichurus ribbon fish	L
714 Trypauchen	M
715 Tricanthus	M
716 Urogymnus	M
717 Wallago	L
718 Xenopterus	M
719 Zygaena (Hammer headd)	P
720 Fish LH	R

Amphibia

721 Amphiuma USA*	
722 Ambystoma USA*	
723 Axolotal large USA*	
724 Acris (Cricket frog)	N
725 Alytes Obsterioans*	
726 Ascephens Tailed (USA)*	
727 Bufo Marinus (Brazil)*	
728 Bombinator (fire belly)*	
729 Cryptobranchus Mexico*	
730 Caccopus	L
731 Hemipipa USA*	
732 Microhyla USA*	
733 Necturus USA*	
734 Mid wife toad with Eggs*	
735 Nototrema USA*	
736 Newt Salamender*	
737 Pipa Americana USA*	
738 Pipa Pipa USA*	
739 Plathodon (Salamander Large)*	
740 Rhacophorus	K
741 Siren Large USA*	
742 Salamander Spotted*	
743 Salamander	
744 Salamander	
745 Triton	
746 Xenopus with Horned claws*	



Embryo

Mammalia

747 Armdilo Model	P+R
748 Bat microchiorptera	L
749 Bandicoot	M
750 Opposum baby in jar*	R+R
751 Platypus replica*	R+R
752 Shrew	M
754 Black rat	L



Pig Embryo

* See Rates under imported & Rare Specimen Section

CODE VALUE J=128, K=160, L=180 M=200, N=240, P=280, R=320

BDS	Rs.	BDS	Rs.
755 Rat embryo	L	767 Mammal Pancreas	R+R
756 Bird embryo with yolk	L	768 Mammal Intestine	R+J
757 Sheep embryo	M	769 Mammal Spinal cord	R+J
758 Pig embryo	M	770 Mammal Testis	R+J
759 Mammal heart (Resumbling human)	R+J	771 Mammal Ovary	R+J
760 Mammal Lung	R+R	772 Mammal Trachea	R+J
761 Mammal Brain	R+R	773 Mammal Stomach	R+R
762 Mammal Kidney	R+J	774 Mammal Appendix	R+J
763 Mammal Liver	R+R	775 Mammal Vagina	R+R
764 Mammal Artery	R+J	776 Mammal Uterus	R+R
765 Mammal Aorta	R+J	777 Mammal Urinary bladder	R+J
766 Mammal Eye	R+J	778 Mammal Oesothagus	R+J

Biocraft's Imported & Rare Specimens

Excellent imported and rare specimens mounted in jars. Each specimen may be supplied with a card having full classification and distribution of the animal if so required.

BIRS

Porifera and Coelenterata

	Rs.
1 Euplectella-(Venus flower basket) (Replica)	1,850
2 Hylonema-Glass rope sponge (Replica)	750
3 Beroe	440

Annelida

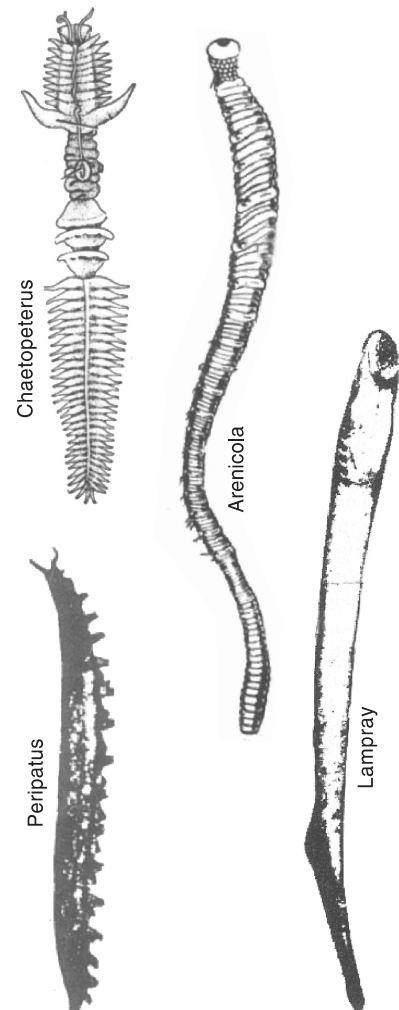
4 Arenicola-(Lug worm) Excellent large sps. UK	1,400
5 Amphitrite	450
6 Aphrodite (Florescent sea mouse) large size	720
7 Branchillion	510
8 Chaetopeterus-(Phosphorescent worm) USA large	2,700
9 Lumbricus-Excellent sps.	500
10 Glycera-Large with head USA	650
11 Polynoe-beautiful specimen	380
12 Pterobdella	600
13 Pontobdella	820

Minor Phyla

14 Bonellia-(Female) Rare from Ceylon large size	880
15 Bonellia (Male)	410
16 Echirus-Excellent sps.	600
18 Peripatus-Very rare specimen (Replica)	1150

Echinodermata/Mollusca

21 Astrophyton-Excellent museum mount	1,650
22 Gorgnocephalus-Basket star-fish	1,650



* See Rates under imported & Rare Specimen Section

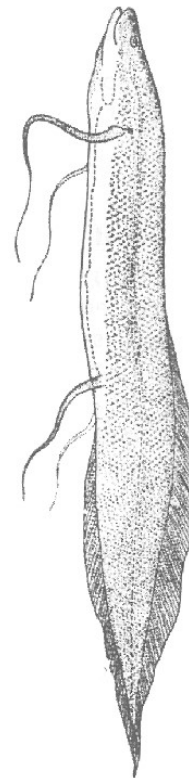
- | | | |
|----|--------------------------|-------|
| 23 | Argunata paper shell USA | 1,400 |
| 24 | Aspergillus Shell | 510 |

Lower Chordata

- | | | |
|----|--|-------|
| 25 | Ammocoets larva-Excellent specimen | 1150 |
| 26 | Petromyzon-Imported USA | 2,100 |
| 28 | Lampray-(River lampray)USA | 1,280 |
| 30 | Hag fish (Bdellostoma)-Excellent specimen from USA | 2,200 |
| 31 | Myxine glutinosa-Excellent specimen | 2,200 |

Pisces (Fishes)

- | | | |
|----|--|-------|
| 32 | Amia Calva (Bow fish) Imported | 1,180 |
| 33 | Acipencer-Ruthenus Sturgeon-large excellent specimen | 3,280 |
| 34 | Calamoichtys-(Reed fish) S. Africa most rare | 2,400 |
| 35 | Chimaera-Excellent large sps. USA | 3,400 |
| 36 | Haptancus USA | 1,250 |
| 37 | Lepidosteus-(Gar pike) Excellent large sps. | 3,200 |
| 38 | Lepido-siren-(Most rare) Imported South Africa | 3,400 |
| 39 | Neo-ceratodus-Replica in Acrylic Case | 1,800 |
| 40 | Protopterus-(African lung fish) South Africa with whip like fins | 2,800 |
| 41 | Polypterus bichir-Log fish South Africa | 2,800 |
| 42 | Polydon spathula-spoon bill fish Imported | 3,450 |
| 43 | Sturgeon (Shovel nose)-Most excellent specimen USA | 3,280 |



Protopterus



Polypterus

Amphibia

- | | | |
|----|---|-------|
| 44 | Acris (cricket frog)-Africa | 590 |
| 45 | Alytes obstetricans-Male with egg excellent original specimen | 750 |
| 47 | Amphiuma (Congo Eel)-(Large) Most excellent specimen | 5,100 |
| 49 | Bombinator-(Fire belly toad) | 1,450 |
| 50 | Bufo marinus-Marine large toad Brazil | 1,250 |
| 51 | Cryptobranchus-(Helbänder) Most excellent specimen | 3,200 |
| 52 | Hemipipa | 1,450 |
| 53 | Micro hyla-Excellent specimen | 510 |
| 54 | Mid wife toad-With eggs | 750 |
| 55 | Necturus-(Mud puppy) | 2,300 |
| 56 | Pipa pipa-Excellent specimen | 2,950 |
| 57 | Pipa Americana-Excellent specimen | 2,950 |
| 58 | Salamander Imported | 2,850 |
| 60 | Xenopus-with pointed horned claws South Africa | 1,800 |



Necturus



Salamander

Biocraft Means—
Business with Trust